



中国认可
国际互认
检测
TESTING
CNAS L13753



TEST REPORT

IEC 62133-2

Secondary cells and batteries containing alkaline or other non-acid electrolytes – Safety requirements for portable sealed secondary cells, and for batteries made from them, for use in portable applications – Part 2: Lithium systems

Report Number.....: S03A26011631L00101

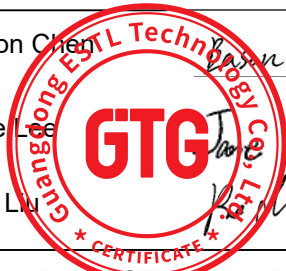
Date of issue.....: 2026-02-09

Total number of pages.....: 27

Tested by (name + signature).....: Eason Chen *Eason Chen*

Reviewed by (name + signature).....: Jane Lee *Jane Lee*

Approved by (name + signature).....: Rod Lu *Rod Lu*



Testing Laboratory Name: Guangdong ESTL Technology Co., Ltd.

Laboratory address: Room 101, 201-208, Unit 1, & Room 201, Unit 4, Building 1, No.9/Room 101, Unit 2, Building 1, No.11, Zongbu 2nd Road, Songshanhu Park, Dongguan, Guangdong, China

Applicant.....: Ropla Elektronik HP Sp. z o.o.

Address.....: Wroclawska 1C, 52-200 Suchy Dwor POLAND

Test specification:

Standard.....: IEC 62133-2:2017, IEC 62133-2:2017/AMD1:2021

EN 62133-2:2017, EN 62133-2:2017/A1:2021

Test item description.....: Polymer Lithium-Ion Battery

Trade Mark.....:

Manufacturer.....: Same as Applicant

Address.....: Same as Applicant

Factory.....: Same as Applicant

Address.....: Same as Applicant

Model/Type reference.....: LP501745

Ratings.....: 3.7V 360mAh 1.332Wh

List of Attachments (including a total number of pages in each attachment): N/A	
Summary of testing:	
<p>Tests performed (test clause and name of test):</p> <p>Test items:</p> <p>cl.7.2.1 Continuous charging at constant voltage (cells);</p> <p>cl.7.2.2 Case stress at high ambient temperature (battery);</p> <p>cl.7.3.1 External short-circuit (cell);</p> <p>cl.7.3.2 External short-circuit (battery);</p> <p>cl.7.3.3 Free fall (cell and battery);</p> <p>cl.7.3.4 Thermal abuse (cells);</p> <p>cl.7.3.5 Crush (cells);</p> <p>cl.7.3.6 Over-charging of battery;</p> <p>cl.7.3.7 Forced discharge (cells);</p> <p>cl.7.3.8 Mechanical tests (batteries);</p> <p>- 7.3.8.1 Vibration</p> <p>- 7.3.8.2 Mechanical shock</p> <p>cl.7.3.9 Forced internal short-circuit (cells).</p> <p>Cl. 8.2 Small cell and battery safety information</p> <p>Tests are made with the number of cells and batteries specified in IEC 62133-2:2017, IEC 62133-2:2017/AMD1:2021 Table 1.</p>	<p>Testing location:</p> <p>Guangdong ESTL Technology Co., Ltd.</p> <p>Room 101, 201-208, Unit 1, & Room 201, Unit 4, Building 1, No.9/Room 101, Unit 2, Building 1, No.11, Zongbu 2nd Road, Songshanhu Park, Dongguan, Guangdong, China</p>
Summary of compliance with National Differences (List of countries addressed):N/A	
<input checked="" type="checkbox"/> The product fulfils the requirements of <u>EN62133-2: 2017, EN 62133-2:2017/A1:2021</u>	

Copy of marking plate:

The artwork below may be only a draft. The use of certification marks on a product must be authorized by the respective NCBs that own these marks.

LP501745 ICP5/17/45
3.7V 360mAh 1.332Wh
Polymer Lithium-Ion Battery
YYMMDD
Ropla Elektronik HP Sp. z o.o.
CAUTION:
May explode if disposed of in fire.
Do not short circuit.

Remark:

1. "YYMMDD", "YY" means to years; "MM" means to months; "DD" means to days.

Test item particulars	: N/A
Classification of installation and use	: To be defined in final product
Supply connection	: DC Connector
Recommend charging method declared by the manufacturer	: CC/CV
Discharge current (0,2 I_t A)	: 72mA
Specified final voltage	: 3.0V
Recommend of charging limit for lithium system	
Upper limit charging voltage per cell	: 4.2V
Maximum charging current	: 360mA
Charging temperature upper limit	: 45°C
Charging temperature lower limit	: 0°C
Polymer cell electrolyte type	: <input type="checkbox"/> gel polymer..... <input type="checkbox"/> solid polymer <input checked="" type="checkbox"/> N/A
Possible test case verdicts:	
- test case does not apply to the test object.....	: N/A (Not Applicable)
- test object does meet the requirement.....	: P (Pass)
- test object does not meet the requirement.....	: F (Fail)
Testing :	
Date of receipt of test item	: 2026-01-17
Date (s) of performance of tests	: 2026-01-17 to 2026-02-03
General remarks:	
The test results presented in this report relate only to the object tested.	
This report shall not be reproduced, except in full, without the written approval of the Issuing testing laboratory.	
Throughout this report a <input type="checkbox"/> comma / <input checked="" type="checkbox"/> point is used as the decimal separator.	

General product information and other remarks:

This battery is constructed with single Li-ion Cell, and has overcharge, over-discharge, over current and short-circuits proof circuit.

The main features of the battery are shown as below (clause 7.1.1)

Model	Rated capacity	Nominal voltage	Nominal Charge Current	Nominal Discharge Current	Maximum Charge Current	Maximum Discharge Current	Limited Charge Voltage	Cut-off Voltage
LP501745	360mAh	3.7V	72mA	72mA	360mA	360mA	4.2V	3.0V

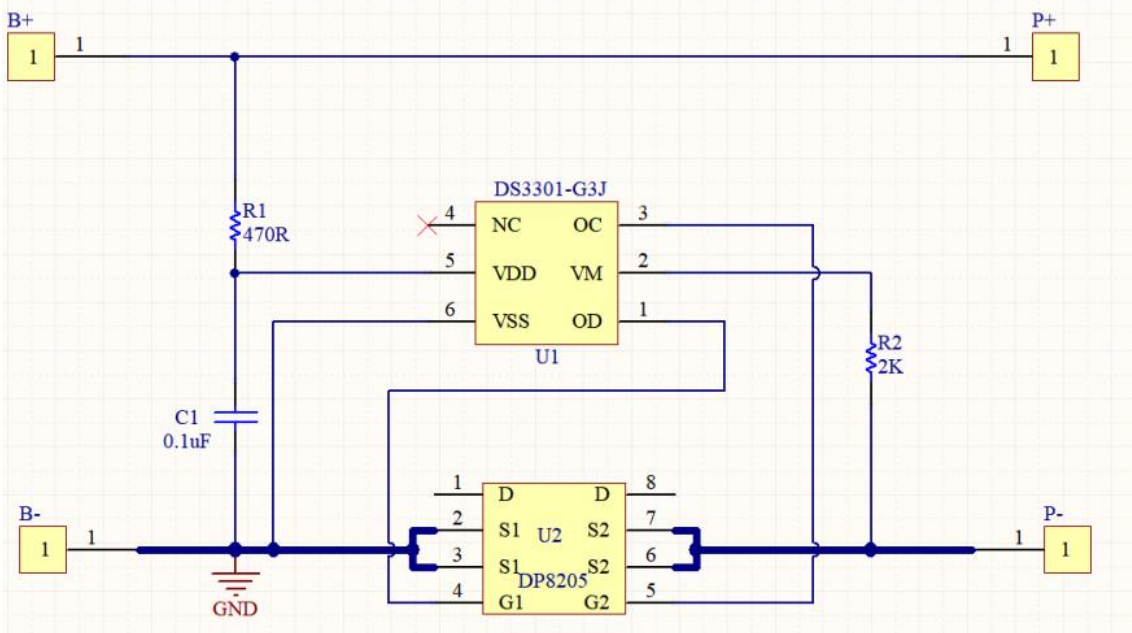
The main features of the cell in the battery are shown as below (clause 7.1.2)

Model	Rated capacity	Nominal voltage	Nominal Charge Current	Nominal Discharge Current	Maximum Charge Current	Maximum Discharge Current	Limited Charge Voltage	Cut-off Voltage
LP501745	360mAh	3.7V	72mA	72mA	360mA	360mA	4.2V	3.0V

The main features of the cell in the battery are shown as below (clause 7.1.2)

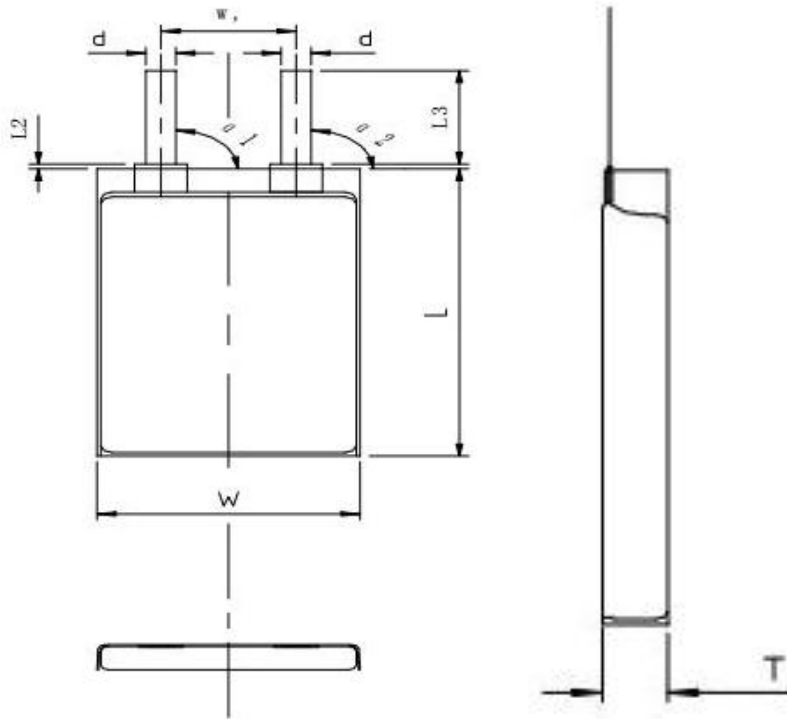
Model	Upper limit charge voltage	Taper-off current (0.05ItA)	Lower charge temperature	Upper charge temperature
LP501745	4.2V	18mA	0°C	45°C

Circuit diagram:



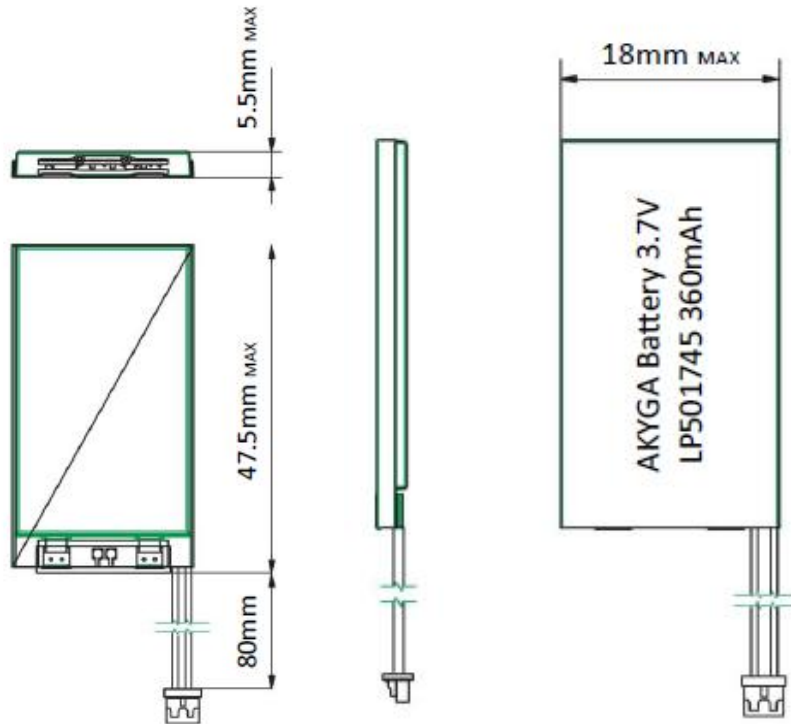
Construction:

Cell:



L:44.5mm*W16.8mm*T4.7mm

Battery:



IEC 62133-2			
Clause	Requirement + Test	Result - Remark	Verdict
4	PARAMETER MEASUREMENT TOLERANCES		P
	Parameter measurement tolerances		P
5	GENERAL SAFETY CONSIDERATIONS		P
5.1	General		P
	Cells and batteries so designed and constructed that they are safe under conditions of both intended use and reasonably foreseeable misuse		P
5.2	Insulation and wiring		P
	The insulation resistance between the positive terminal and externally exposed metal surfaces of the battery (excluding electrical contact surfaces) is not less than 5 M Ω	Not metal surfaces exists.	N/A
	Insulation resistance (M Ω)..... :		—
	Internal wiring and insulation are sufficient to withstand maximum anticipated current, voltage and temperature requirements		P
	Orientation of wiring maintains adequate clearance and creepage distances between conductors		P
	Mechanical integrity of internal connections accommodates reasonably foreseeable misuse		P
5.3	Venting		P
	Battery cases and cells incorporate a pressure relief mechanism or are constructed so that they relieve excessive internal pressure at a value and rate that will preclude rupture, explosion and self-ignition	Venting mechanism exists on the narrow side of pouch cell.	P
	Encapsulation used to support cells within an outer casing does not cause the battery to overheat during normal operation nor inhibit pressure relief		N/A
5.4	Temperature, voltage and current management		P
	Batteries are designed such that abnormal temperature rise conditions are prevented	Overcharge, over discharge, over current and short-circuit proof circuit used in this battery. See tests of clause 7.	P
	Batteries are designed to be within temperature, voltage and current limits specified by the cell manufacturer		P
	Batteries are provided with specifications and charging instructions for equipment manufacturers so that specified chargers are designed to maintain charging within the temperature, voltage and current limits specified	The charging limits specified in manufacturer's specifications.	P
5.5	Terminal contacts		P
	The size and shape of the terminal contacts ensure that they can carry the maximum anticipated current		P

IEC 62133-2			
Clause	Requirement + Test	Result - Remark	Verdict
	External terminal contact surfaces are formed from conductive materials with good mechanical strength and corrosion resistance		P
	Terminal contacts are arranged to minimize the risk of short-circuit		P
5.6	Assembly of cells into batteries		P
5.6.1	General		P
	Each battery have an independent control and protection for current, voltage, temperature and any other parameter required for safety and to maintain the cells within their operating region		P
	This protection may be provided external to the battery such as within the charger or the end devices	Protection circuit within the battery	N/A
	If protection is external to the battery, the manufacturer of the battery provide this safety relevant information to the external device manufacturer for implementation		N/A
	If there is more than one battery housed in a single battery case, each battery have protective circuitry that can maintain the cells within their operating regions		N/A
	Manufacturers of cells specify current, voltage and temperature limits so that the battery manufacturer/designer may ensure proper design and assembly	Current, voltage and temperature limits specified by cell manufacturer.	P
	Batteries that are designed for the selective discharge of a portion of their series connected cells incorporate circuitry to prevent operation of cells outside the limits specified by the cell manufacturer	Battery without selective discharge function.	N/A
	Protective circuit components added as appropriate and consideration given to the end-device application		P
	The manufacturer of the battery provide a safety analysis of the battery safety circuitry with a test report including a fault analysis of the protection circuit under both charging and discharging conditions confirming the compliance		P
5.6.2	Design recommendation		P
	For the battery consisting of a single cell or a single cellblock, it is recommended that the charging voltage of the cell does not exceed the upper limit of the charging voltage specified in Table 2	1S1P	P
	For the battery consisting of series-connected plural single cells or series-connected plural cellblocks, it is recommended that the voltages of any one of the single cells or single cellblocks does not exceed the upper limit of the charging voltage, specified in Table 2, by monitoring the voltage of every single cell or the single cellblocks		N/A

IEC 62133-2			
Clause	Requirement + Test	Result - Remark	Verdict
	For the battery consisting of series-connected plural single cells or series-connected plural cellblocks, it is recommended that charging is stopped when the upper limit of the charging voltage is exceeded for any one of the single cells or single cellblocks by measuring the voltage of every single cell or the single cellblocks		N/A
	For batteries consisting of series-connected cells or cell blocks, nominal charge voltage not be counted as an overcharge protection		N/A
	For batteries consisting of series-connected cells or cell blocks, cells have closely matched capacities, be of the same design, be of the same chemistry and be from the same manufacturer		N/A
	It is recommended that the cells and cell blocks not discharged beyond the cell manufacturer's specified final voltage		P
	For batteries consisting of series-connected cells or cell blocks, cell balancing circuitry incorporated into the battery management system		N/A
5.6.3	Mechanical protection for cells and components of batteries		N/A
	Mechanical protection for cells, cell connections and control circuits within the battery provided to prevent damage as a result of intended use and reasonably foreseeable misuse		N/A
	The mechanical protection can be provided by the battery case or it can be provided by the end product enclosure for those batteries intended for building into an end product		N/A
	The battery case and compartments housing cells designed to accommodate cell dimensional tolerances during charging and discharging as recommended by the cell manufacturer		N/A
	For batteries intended for building into a portable end product, testing with the battery installed within the end product considered when conducting mechanical tests		N/A
5.7	Quality plan		P
	The manufacturer prepares and implements a quality plan that defines procedures for the inspection of materials, components, cells and batteries and which covers the whole process of producing each type of cell or battery	Complied.	P
5.8	Battery safety components		N/A

IEC 62133-2			
Clause	Requirement + Test	Result - Remark	Verdict
6	TYPE TEST AND SAMPLE SIZE		P
	Tests are made with the number of cells or batteries specified in Table 1 using cells or batteries that are not more than six months old		P
	Coin cells with resistance $\leq 3 \Omega$ (measured according annex D) are tested according table 1	Not coin cells	N/A
	Unless otherwise specified, tests are carried out in an ambient temperature of $20 \text{ }^\circ\text{C} \pm 5 \text{ }^\circ\text{C}$		P
	The safety analysis of 5.6.1 identify those components of the protection circuit that are critical for short-circuit, overcharge and overdischarge protection		P
	When conducting the short-circuit test, consideration given to the simulation of any single fault condition that is likely to occur in the protecting circuit that would affect the short-circuit test		P
7	SPECIFIC REQUIREMENTS AND TESTS		P
7.1	Charging procedure for test purposes		P
7.1.1	First procedure		P
	This charging procedure applies to subclauses other than those specified in 7.1.2		P
	Unless otherwise stated in this document, the charging procedure for test purposes is carried out in an ambient temperature of $20 \text{ }^\circ\text{C} \pm 5 \text{ }^\circ\text{C}$, using the method declared by the manufacturer		P
	Prior to charging, the battery have been discharged at $20 \text{ }^\circ\text{C} \pm 5 \text{ }^\circ\text{C}$ at a constant current of 0,2 It A down to a specified final voltage		P
7.1.2	Second procedure		P
	This charging procedure applies only to 7.3.1, 7.3.4, 7.3.5, and 7.3.9		P
	After stabilization for 1 h to 4 h, respectively, at ambient temperature of highest test temperature and lowest test temperature, as specified in Table 2, cells are charged by using the upper limit charging voltage and maximum charging current, until the charging current is reduced to 0,05 It A, using a constant voltage charging method	Charge temperature 0-45°C declared.	P
7.2	Intended use		P
7.2.1	Continuous charging at constant voltage (cells)	Tests Complied.	P
	Fully charged cells are subjected for 7 days to a charge using the charging method for current and standard voltage specified by the cell manufacturer		P
	Results: No fire. No explosion. No leakage..... :	(See appended table 7.2.1)	P
7.2.2	Case stress at high ambient temperature (battery)	Tested complied.	P

IEC 62133-2			
Clause	Requirement + Test	Result - Remark	Verdict
	Oven temperature (°C)..... :	70°C ± 2°C	—
	Results: No physical distortion of the battery case resulting in exposure of internal protective components and cells	No physical distortion of the battery case	P
7.3	Reasonably foreseeable misuse	See below	P
7.3.1	External short-circuit (cell)	Tests Complied.	P
	The cells were tested until one of the following occurred:		P
	- 24 hours elapsed; or		N/A
	- The case temperature declined by 20 % of the maximum temperature rise		P
	Results: No fire. No explosion..... :	(See appended table 7.3.1)	P
7.3.2	External short-circuit (battery)	Tested complied.	P
	The batteries were tested until one of the following occurred:		P
	- 24 hours elapsed; or		N/A
	- The case temperature declined by 20 % of the maximum temperature rise		P
	In case of rapid decline in short circuit current, the battery pack remained on test for an additional one hour after the current reached a low end steady state condition		P
	A single fault in the discharge protection circuit conducted on one to four (depending upon the protection circuit) of the five samples before conducting the short-circuit test		P
	A single fault applies to protective component parts such as MOSFET, fuse, thermostat or positive temperature coefficient (PTC) thermistor		P
	Results: No fire. No explosion..... :	(See appended table 7.3.2)	P
7.3.3	Free fall	Tests Complied.	P
	Results: No fire. No explosion	No fire. No explosion	P
7.3.4	Thermal abuse (cells)	Tests Complied.	P
	Oven temperature (°C)..... :	130°C ± 2°C	—
	Results: No fire. No explosion	No fire. No explosion	P
7.3.5	Crush (cells)	Tests Complied.	P
	The crushing force was released upon:		P
	- The maximum force of 13 kN ± 0,78 kN has been applied; or		P
	- An abrupt voltage drop of one-third of the original voltage has been obtained		N/A
	Results: No fire. No explosion..... :	(See appended table 7.3.5)	P
7.3.6	Over-charging of battery	Tests Complied.	P

IEC 62133-2			
Clause	Requirement + Test	Result - Remark	Verdict
	The supply voltage which is:		P
	- 1,4 times the upper limit charging voltage presented in Table A.1 (but not to exceed 6,0 V) for single cell/cell block batteries or		P
	- 1,2 times the upper limit charging voltage presented in Table A.1 per cell for series connected multi-cell batteries, and		N/A
	- Sufficient to maintain a current of 2,0 It A throughout the duration of the test or until the supply voltage is reached		P
	Test was continued until the temperature of the outer casing:		P
	- Reached steady state conditions (less than 10 °C change in 30-minute period); or		N/A
	- Returned to ambient		P
	Results: no fire, no explosion.....:	(See appended table 7.3.6)	P
7.3.7	Forced discharge (cells)	Tests Complied.	P
	Discharge a single cell to the lower limit discharge voltage specified by the cell manufacturer		P
	The discharged cell is then subjected to a forced discharge at 1 It A to the negative value of the upper limit charging voltage		P
	- The discharge voltage reaches the negative value of upper limit charging voltage within the testing duration. The voltage is maintained at the negative value of the upper limit charging voltage by reducing the current for the remainder of the testing duration		N/A
	- The discharge voltage does not reach the negative value of upper limit charging voltage within the testing duration. The test is terminated at the end of the testing duration		P
7.3.8	Mechanical tests (batteries)		P
7.3.8.1	Vibration	Tests Complied.	P
	Results: no fire, no explosion, no rupture, no leakage or venting.....:	(See appended table 7.3.8.1)	P
7.3.8.2	Mechanical shock	Tests Complied.	P
	Results: no leakage, no venting, no rupture, no explosion and no fire.....:	(See appended table 7.3.8.2)	P
7.3.9	Design evaluation – Forced internal short-circuit (cells)	Tests Complied.	P
	The cells complied with national requirement for.....:	France, Japan, Korea, Switzerland	—
	The pressing was stopped upon:		P
	- A voltage drop of 50 mV has been detected; or		N/A
	- The pressing force of 800 N (cylindrical cells) or 400 N (prismatic cells) has been reached	400N for prismatic cells	P

IEC 62133-2			
Clause	Requirement + Test	Result - Remark	Verdict
	Results: no fire.....:	(See appended table 7.3.9)	P
8	INFORMATION FOR SAFETY		P
8.1	General		P
	Manufacturers of secondary cells provides information about current, voltage and temperature limits of their products	Information is provided in manufacturer's specification.	P
	Manufacturers of batteries provides information regarding how to minimize and mitigate hazards to equipment manufacturers or end-users	Information is provided in manufacturer's specification.	P
	Systems analyses are performed by device manufacturers to ensure that a particular battery design prevents hazards from occurring during use of a product		N/A
	As appropriate, any information relating to hazard avoidance resulting from a system analysis is provided to the end user		N/A
	Do not allow children to replace batteries without adult supervision		P
8.2	Small cell and battery safety information		P
	The following warning language is to be provided with the information packaged with the small cells and batteries or equipment using them:		P
	- Keep small cells and batteries which are considered swallowable out of the reach of children		P
	- Swallowing may lead to burns, perforation of soft tissue, and death. Severe burns can occur within 2 h of ingestion		P
	- In case of ingestion of a cell or battery, seek medical assistance promptly		P
9	MARKING		P
9.1	Cell marking		P
	Cells are marked as specified in IEC 61960, except coin cells		N/A
	Coin cells whose external surface area is too small to accommodate the markings on the cells show the designation and polarity		N/A
	By agreement between the cell manufacturer and the battery and/or end product manufacturer, component cells used in the manufacture of a battery need not be marked		P
9.2	Battery marking		P
	Batteries are marked as specified in IEC 61960, except for coin batteries		P

IEC 62133-2			
Clause	Requirement + Test	Result - Remark	Verdict
	Coin batteries whose external surface area is too small to accommodate the markings on the batteries show the designation and polarity	Not coin batteries.	N/A
	Batteries are marked with an appropriate caution statement		P
	- Terminals have clear polarity marking on the external surface of the battery, or		P
	- Not be marked with polarity markings if the design of the external connector prevents reverse polarity connections		N/A
9.3	Caution for ingestion of small cells and batteries		N/A
	Coin cells and batteries identified as small batteries include a caution statement regarding the hazards of ingestion in accordance with 8.2		N/A
	Small cells and batteries are intended for direct sale in consumer-replaceable applications, caution for ingestion is given on the immediate package		N/A
9.4	Other information		P
	The following information are marked on or supplied with the battery:		P
	- Storage and disposal instructions	Information for storage and disposal instructions mentioned in manufacturer's specifications.	P
	- Recommended charging instructions	Information for recommended charging instructions mentioned in manufacturer's specifications.	P

10	PACKAGING AND TRANSPORT		P
	Packaging for coin cells are not be small enough to fit within the limits of the ingestion gauge of Figure 3	Not Coin cells.	N/A

ANNEX A	CHARGING AND DISCHARGING RANGE OF SECONDARY LITHIUM ION CELLS FOR SAFE USE		P
A.1	General		P
A.2	Safety of lithium ion secondary battery		P
A.3	Consideration on charging voltage		P
A.3.1	General	Charging voltage is 4.2V.	P
A.3.2	Upper limit charging voltage	4.2V	P
A.3.2.1	General		P
A.3.2.2	Explanation of safety viewpoint		P
A.3.2.3	Safety requirements, when different upper limit charging voltage is applied		P

IEC 62133-2			
Clause	Requirement + Test	Result - Remark	Verdict
A.4	Consideration of temperature and charging current		P
A.4.1	General		P
A.4.2	Recommended temperature range	See A.4.2.2	P
A.4.2.1	General		P
A.4.2.2	Safety consideration when a different recommended temperature range is applied	Charging temperature declared by client is: 0-45°C.	P
A.4.3	High temperature range		N/A
A.4.3.1	General		N/A
A.4.3.2	Explanation of safety viewpoint		N/A
A.4.3.3	Safety considerations when specifying charging conditions in the high temperature range		N/A
A.4.3.4	Safety considerations when specifying a new upper limit in the high temperature range		N/A
A.4.4	Low temperature range		N/A
A.4.4.1	General		N/A
A.4.4.2	Explanation of safety viewpoint		N/A
A.4.4.3	Safety considerations, when specifying charging conditions in the low temperature range		N/A
A.4.4.4	Safety considerations when specifying a new lower limit in the low temperature range		N/A
A.4.5	Scope of the application of charging current		P
A.4.6	Consideration of discharge		P
A.4.6.1	General		P
A.4.6.2	Final discharge voltage and explanation of safety viewpoint		P
A.4.6.3	Discharge current and temperature range		P
A.4.6.4	Scope of application of the discharging current		P
A.5	Sample preparation		P
A.5.1	General		P
A.5.2	Insertion procedure for nickel particle to generate internal short		P
A.5.3	Disassembly of charged cell		P
A.5.4	Shape of nickel particle		P
A.5.5	Insertion of nickel particle in cylindrical cell		N/A
A.5.5.1	Insertion of nickel particle in winding core		N/A
A.5.5.2	Marking the position of the nickel particle on both ends of the winding core of the separator		N/A
A.5.6	Insertion of nickel particle in prismatic cell		P
A.6	Experimental procedure of the forced internal short-circuit test		P

IEC 62133-2			
Clause	Requirement + Test	Result - Remark	Verdict
A.6.1	Material and tools for preparation of nickel particle		P
A.6.2	Example of a nickel particle preparation procedure		P
A.6.3	Positioning (or placement) of a nickel particle		P
A.6.4	Damaged separator precaution		P
A.6.5	Caution for rewinding separator and electrode		P
A.6.6	Insulation film for preventing short-circuit		P
A.6.7	Caution when disassembling a cell		P
A.6.8	Protective equipment for safety		P
A.6.9	Caution in the case of fire during disassembling		P
A.6.10	Caution for the disassembling process and pressing the electrode core		P
A.6.11	Recommended specifications for the pressing device		P
ANNEX B	RECOMMENDATIONS TO EQUIPMENT MANUFACTURERS AND BATTERY ASSEMBLERS		P
ANNEX C	RECOMMENDATIONS TO THE END-USERS		N/A
ANNEX D	MEASUREMENT OF THE INTERNAL AC RESISTANCE FOR COIN CELLS		N/A
D.1	General		N/A
D.2	Method		N/A
	A sample size of three coin cells is required for this measurement		N/A
	Coin cells with an internal resistance greater than 3 Ω require no further testing..... :	(See appended table D.2)	N/A
	Coin cells with an internal resistance less than or equal to 3 Ω are subjected to the testing according to Clause 6 and Table 1		N/A
ANNEX E	PACKAGING AND TRANSPORT		P
ANNEX F	COMPONENT STANDARDS REFERENCES		N/A

IEC 62133-2					
Clause	Requirement + Test		Result - Remark		Verdict
	TABLE: Critical components information				P
Object/part no.	Manufacturer/ trademark	Type/model	Technical data	Standard	Mark(s) of conformity ¹⁾
Cell	Ropla Elektronik HP Sp. z o.o.	LP501745	3.7V, 360 mAh, 1.332Wh	IEC 62133-2:2017, IEC 62133-2:2017/AM D1:2021	Tested with appliance
-Electrolyte	Zhuhai Guangrui New Material Co., Lt	WZY-012	LiPF ₆ , EC+DEC+EMC	--	--
-Separator	SHENZHEN SHUNJIA MATERIALS CO., LTD	25um	25±2um,PE, 135°C	--	--
-Positive electrode	JIANGMEN KANHOO INDUSTRY CO., LTD	LCO-402	LiCoO ₂ , NMP, PVDF, Conductive, Additive, Aluminum foil	--	--
-Negative electrode	DaLian Hongguang Lithium Co., LTD	HG-8C	Graphite, CMC, SBR, Conductive, Additive, Copper foil	--	--
PCB	Shenzhen LuTongda Technology Co Ltd.	LTD-D	V-0, 130°C, Min. 0.13mm	UL 796	UL E486889
PCB (Alternative)	Interchangeable	Interchangeable	V-0, 130°C	--	UL Approved
IC (U1)	Shenzhen Desun Microelectronic Technology Co., Ltd.	DS3301-G3J	Overcharge detection voltage: 4.28±0.025V, Overdischarge detection voltage: 3.0± 0.05V, Overcurrent detection voltage: 0.08V, Short protection voltage:0.55V T _{opr} : -40°C~+85°C	--	Tested with appliance
MOSEFET (Q1, Q2)	Shenzhen Developer Microelectronics Co., Ltd	DP8205	V _{DS} : 20V, V _{GS} : ±12V, I _D : 5A, T _J : -55°C~150°C	--	Tested with appliance
Wiring	DONGGUAN ZHONGZHENG WIRE & CABLE TECH CO LTD	UL1571	28AWG, 80°C, 30V	UL 758	UL E336285
Connector(J1)	Zhejiang United Electronics Co., Ltd.	SHR-02V	Resin, 150V,V-0, -25°C to +85°C, 28AWG	--	Tested with appliance
Supplementary information:					
¹⁾ Provided evidence ensures the agreed level of compliance. See OD-2039.					

IEC 62133-2			
Clause	Requirement + Test	Result - Remark	Verdict

7.2.1	TABLE: Continuous charging at constant voltage (cells)				P
Sample No.	Recommended charging voltage V _c (Vdc)	Recommended charging current I _{rec} (A)	OCV before test (Vdc)	Results	
C1	4.2	0.072	4.186	A	
C2	4.2	0.072	4.184	A	
C3	4.2	0.072	4.183	A	
C4	4.2	0.072	4.187	A	
C5	4.2	0.072	4.182	A	

Supplementary information:
A - No fire. No explosion. No leakage.
B - Fire.
C - Explosion.
D - Leakage.
E - Bulge.
F - Others (please explain).

7.3.1	TABLE: External short circuit (cell)					P
Sample No.	Ambient (°C)	OCV at start of test (Vdc)	Resistance of circuit (mΩ)	Maximum case temperature rise ΔT (K)	Results	
Samples charged at charging temperature limit (45°C)						
C6	55.9	4.163	87	55.1	A, E, H	
C7	56.3	4.164	83	55.1	A, E, H	
C8	55.9	4.167	85	57.1	A, E, H	
C9	56.4	4.162	80	48.6	A, E, H	
C10	55.9	4.165	84	48.7	A, E, H	
Samples charged at charging temperature (0°C)						
C11	57.0	4.103	85	60.5	A, E, H	
C12	57.0	4.105	81	59.9	A, E, H	
C13	56.9	4.104	83	61.7	A, E, H	
C14	57.0	4.101	84	60.4	A, E, H	
C15	57.0	4.102	79	60.7	A, E, H	

Supplementary information:
A - No fire. No explosion.
B - Fire.
C - Explosion.
D - Leakage.
E - Bulge.
F - Others (please explain).
G - The test was completed after 24 h.
H - The test was completed after the cell casing cooled to 20% of the maximum temperature rise.

IEC 62133-2			
Clause	Requirement + Test	Result - Remark	Verdict

7.3.2	TABLE: External short circuit (battery)					P
Sample No.	Ambient T (°C)	OCV before test (Vdc)	Resistance of circuit (mΩ)	Maximum case temperature rise ΔT (K)	Component single fault condition	Results
B4	22.1	4.183	88	101.7	SC-U2	A, E, H
B5	22.1	4.185	81	101.2	SC-U2	A, E, H
B6	22.1	4.181	80	100.9	SC-U2	A, E, H
B7	22.1	4.186	86	103.7	SC-U2	A, E, H
B8	22.1	4.184	82	0.4	Normal	A, F

Supplementary information:
SC:short-circuit
OC:open-circuit
A - No fire. No explosion.
B - Fire.
C - Explosion.
D - Leakage.
E - Bulge.
F - Others (please explain). -rapid decline in short circuit current, the battery pack should remain on test for an additional one hour after the current reaches a low end steady state condition.
G – The test was completed after 24 h.
H – The test was completed after the cell casing cooled to 20% of the maximum temperature rise.
I –

7.3.5	TABLE: Crush (cells)			P
Sample No.	OCV before test (Vdc)	OCV at removal of crushing force (Vdc)	Maximum force applied to the cell during crush (kN)	Results
Samples charged at charging temperature limit (45°C)				
C29	4.164	--	13.0	A, G
C30	4.168	--	13.0	A, G
C31	4.163	--	13.0	A, G
C32	4.167	--	13.0	A, G
C33	4.166	--	13.0	A, G
Samples charged at charging temperature limit (0°C)				
C34	4.104	--	13.0	A, G
C35	4.103	--	13.0	A, G
C36	4.105	--	13.0	A, G
C37	4.102	--	13.0	A, G
C38	4.103	--	13.0	A, G

IEC 62133-2			
Clause	Requirement + Test	Result - Remark	Verdict
Supplementary information: A - No fire. No explosion. B - Fire. C - Explosion. D - Leakage. E - Bulge. F - Others (please explain). G – Force released after maximum level reached H – Force released after abrupt voltage drop of one-third the original value.			

7.3.6	TABLE: Over-charging of battery			P
Constant charging current (A).....:		0.72		—
Supply voltage (Vdc).....:		5.88		—
Sample No.	OCV before charging (Vdc)	Total charging time (minute)	Maximum outer case temperature (°C)	Results
B12	3.312	112	29.5	A
B13	3.315	112	29.7	A
B14	3.318	112	30.8	A
B15	3.316	112	29.5	A
B16	3.314	112	31.1	A
Supplementary information: A - No fire. No explosion. B - Fire. C - Explosion. D - Leakage. E - Bulge. F - Others (please explain).				

IEC 62133-2			
Clause	Requirement + Test	Result - Remark	Verdict

7.3.7	TABLE: Forced discharge (cells)				P
Sample No.	OCV before application of reverse charge (Vdc)	Measured reverse charge I_t (A)	Lower limit discharge voltage (Vdc)	Results	
C39	3.313	0.36	3.0	A, H	
C40	3.311	0.36	3.0	A, H	
C41	3.312	0.36	3.0	A, H	
C42	3.314	0.36	3.0	A, H	
C43	3.316	0.36	3.0	A, H	

Supplementary information:
A - No fire. No explosion.
B - Fire.
C - Explosion.
D - Leakage.
E - Bulge.
F - Others (please explain).
G – The voltage reached negative value of upper limit charging voltage within 90 min.
H - The voltage did not reach negative value of upper limit charging voltage.

7.3.8.1	TABLE: Vibration					P
Sample No.	OCV before test (Vdc)	OCV after test (Vdc)	Mass before test (g)	Mass after test (g)	Results	
B17	4.186	4.185	7.461	7.460	A	
B18	4.183	4.182	7.396	7.396	A	
B19	4.182	4.182	7.578	7.578	A	

Supplementary information:
A - No fire. No explosion. No leakage. No venting. No rupture.
B - Fire.
C - Explosion.
D - Leakage.
E – Venting.
F – Rupture.
G - Bulge.
H - Others (please explain).

IEC 62133-2			
Clause	Requirement + Test	Result - Remark	Verdict

7.3.8.2	TABLE: Mechanical shock					P
Sample No.	OCV before test (Vdc)	OCV after test (Vdc)	Mass before test (g)	Mass after test (g)	Results	
B20	4.186	4.185	7.168	7.167	A	
B21	4.184	4.183	7.397	7.397	A	
B22	4.181	4.181	7.429	7.428	A	

Supplementary information:
A - No fire. No explosion. No leakage. No venting. No rupture.
B - Fire.
C - Explosion.
D - Leakage.
E - Venting.
F - Rupture.
G - Bulge.
H - Others (please explain).

7.3.9	TABLE: Forced internal short circuit (cells)					P
Sample No.	Chamber ambient T (°C)	OCV before test (Vdc)	Particle location ¹⁾	Maximum applied pressure (N)	Results	
Samples charged at charging temperature limit (45°C)						
C44	45	4.165	1	400	A, H	
C45	45	4.163	1	400	A, H	
C46	45	4.164	1	400	A, H	
C47	45	4.162	1	400	A, H	
C48	45	4.163	1	400	A, H	
Samples charged at charging temperature limit (0°C)						
C49	0	4.104	1	400	A, H	
C50	0	4.108	1	400	A, H	
C51	0	4.103	1	400	A, H	
C52	0	4.105	1	400	A, H	
C53	0	4.106	1	400	A, H	

IEC 62133-2			
Clause	Requirement + Test	Result - Remark	Verdict
<p>Supplementary information:</p> <p>¹⁾ Identify one of the following:</p> <p>1: Nickel particle inserted between positive and negative (active material) coated area.</p> <p>2: Nickel particle inserted between positive aluminium foil and negative active material coated area.</p> <p>A – No fire B – Fire C - Explosion. D - Leakage. E - Bulge. F - Others (please explain). G – Test concluded when 50 mV voltage drop occurred prior to reaching force limit H – Test concluded when 400 N pressure was reached and 50 mV voltage drop was not achieved I – Test was concluded when fire occurred</p>			

D.2	TABLE: Internal AC resistance for coin cells			N/A
Sample no.	Ambient T (°C)	Store time (h)	Resistance Rac (Ω)	Results ¹⁾

Supplementary information:

¹⁾ Coin cells with an internal resistance less than or equal to 3 Ω, see test result on corresponding tables according to Clause 6 and Table 1.

Photos

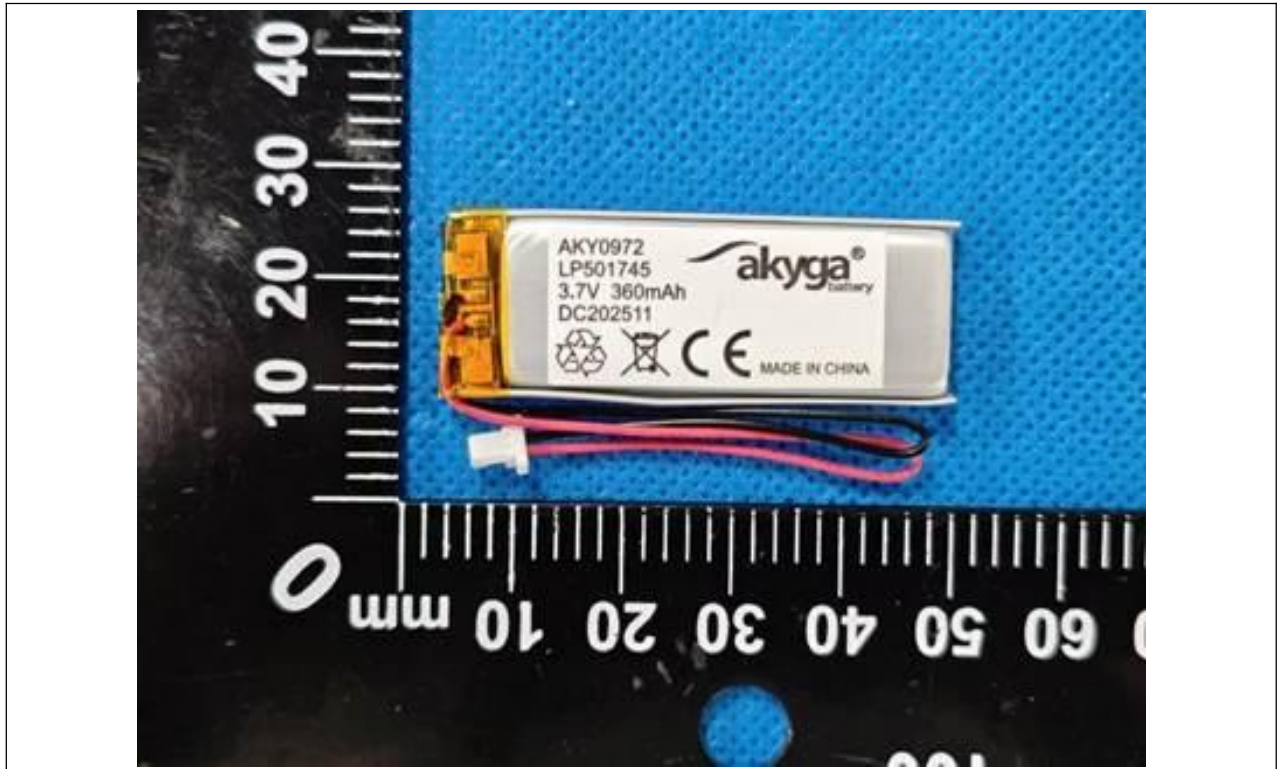


Fig. 1

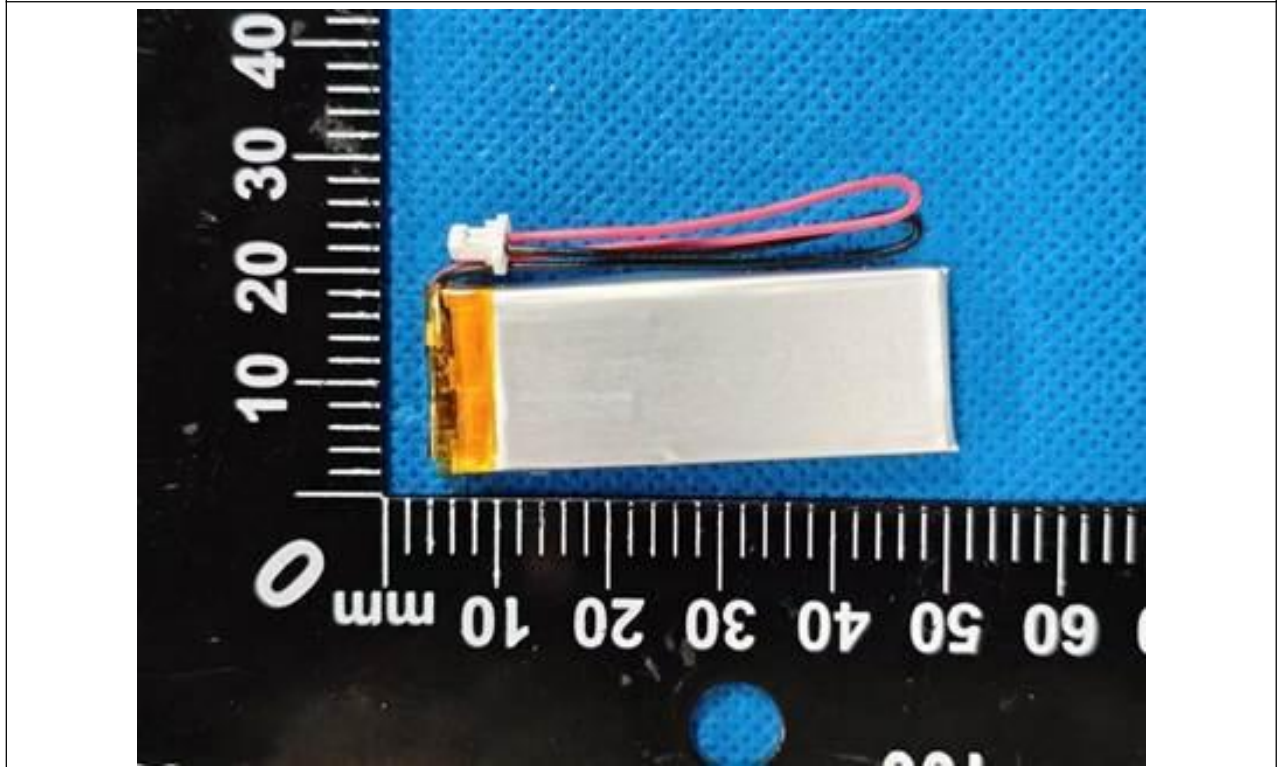


Fig. 2

Photos

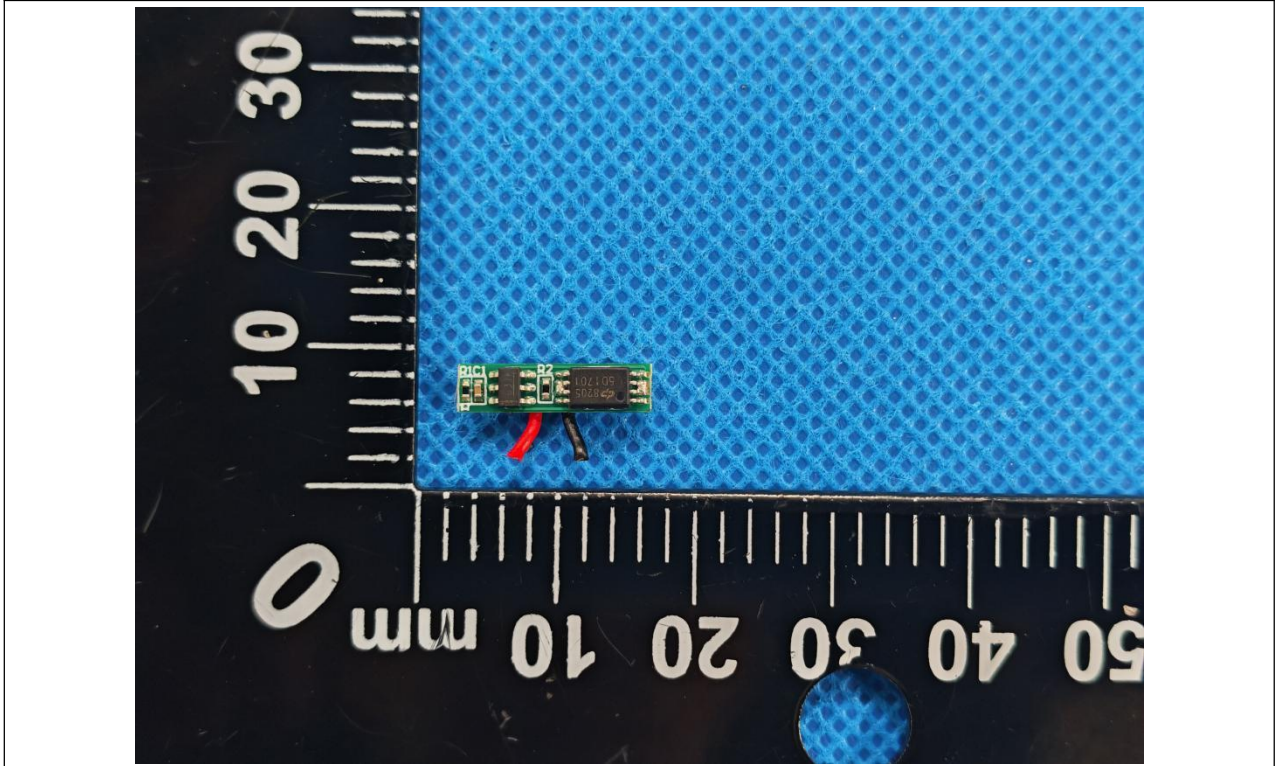


Fig. 3

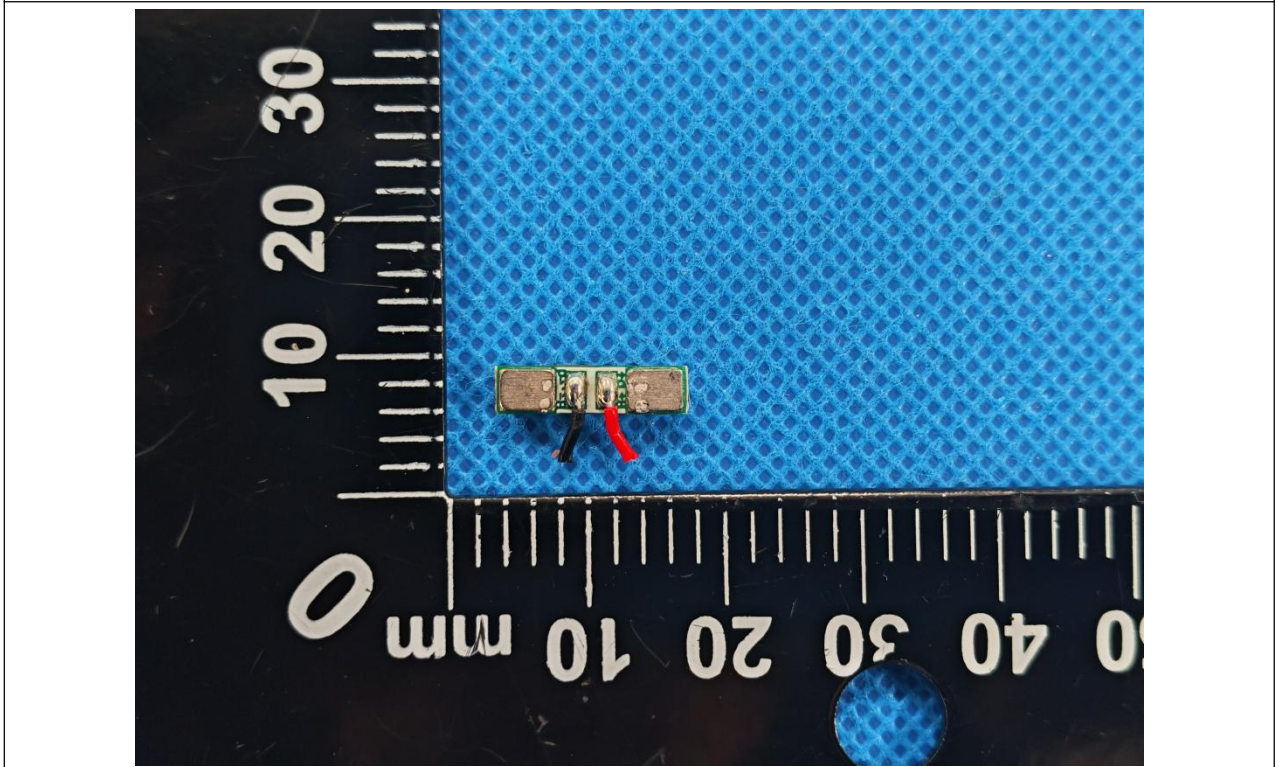


Fig. 4

Photos



Fig. 5

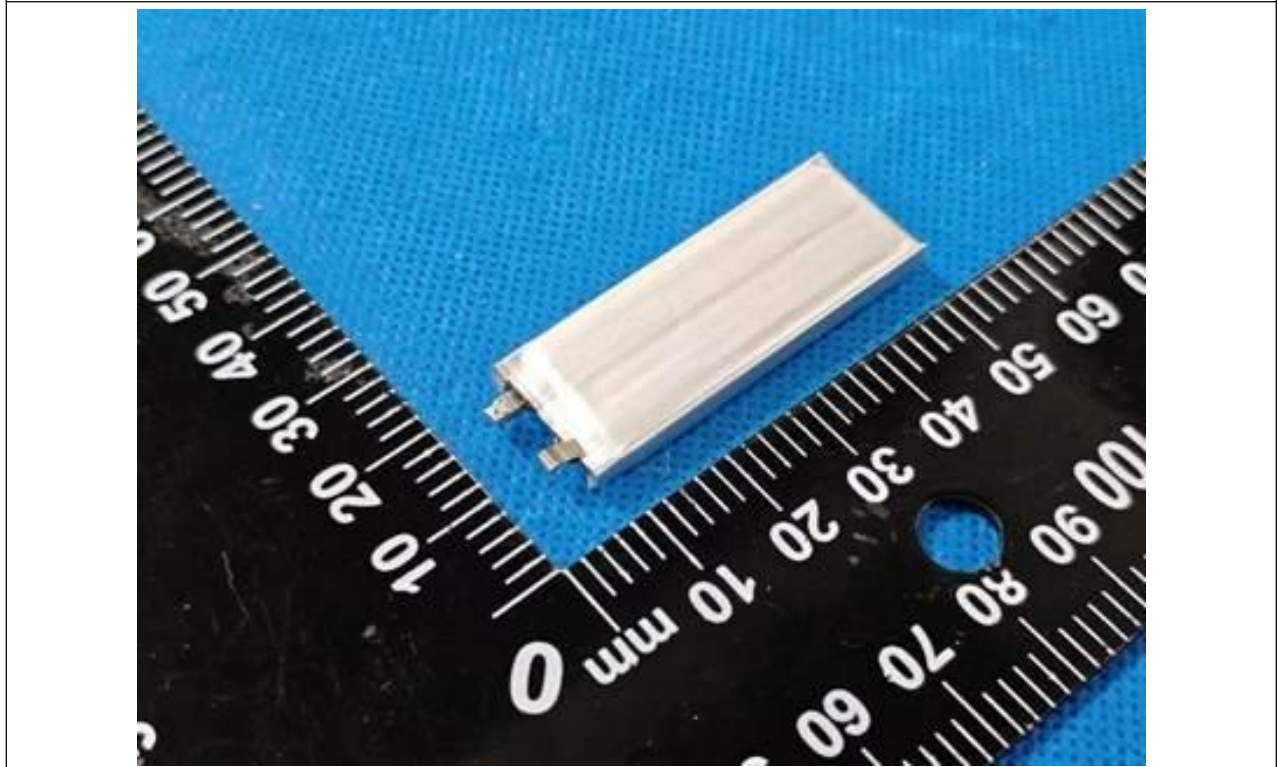


Fig. 6

--- End of Report ---