

# Specification

Lithium Polymer Battery Pack (LP903450) 1600mAh 3.7V with Protection Circuit Module (PCM)

This data sheet describes the requirements and properties of lithium polymer rechargeable battery pack manufactured by AKYGA

### Mechanical Characteristics

Type number: LP903450  
 Designation IEC system: Lithium polymer battery pack  
 Length:  $50 \pm 0.4$ mm  
 Width:  $34 \pm 0.4$ mm  
 Thickness:  $9.0 \pm 0.2$ mm  
 Cable:  $50.0 \pm 3$ mm (26AWG UL 1007)  
 Weight approx: 35.0g

### Electrical Specification

Rated capacity: 1600mAh min, 1630mAh typ.  
 Nominal voltage: 3.7V  
 Max. operating voltage range: 3.0V to 4.2V  
 Charge voltage:  $4.2 \pm 50$ mV  
 Initial charge current: Standard charge: 800mA  
 Rapid charge: 1600mA  
 Charging cut-off (A or B)  
 A) By time: Standard charge: 7 hours  
 Rapid charge: 4 hours  
 B) By min. current: 32mA  
 Max continuous discharge current: 1600mA  
 Internal impedance (1kHz): approx 42mOhm  
 Exp. cycle life: >500 cycles >80% of initial cap. (0.5C/0.5C)  
 Cell protection  
 Overcharge detection:  $4.325 \pm 25$ mV  
 (0.5 to 2.0 sec. delay, resume  $4.075 \pm 50$ mV)  
 Overdischarge detection:  $2.50V \pm 80$ mV  
 (6.25 to 250msec. delay, resume  $2.9V \pm 100$ mV)

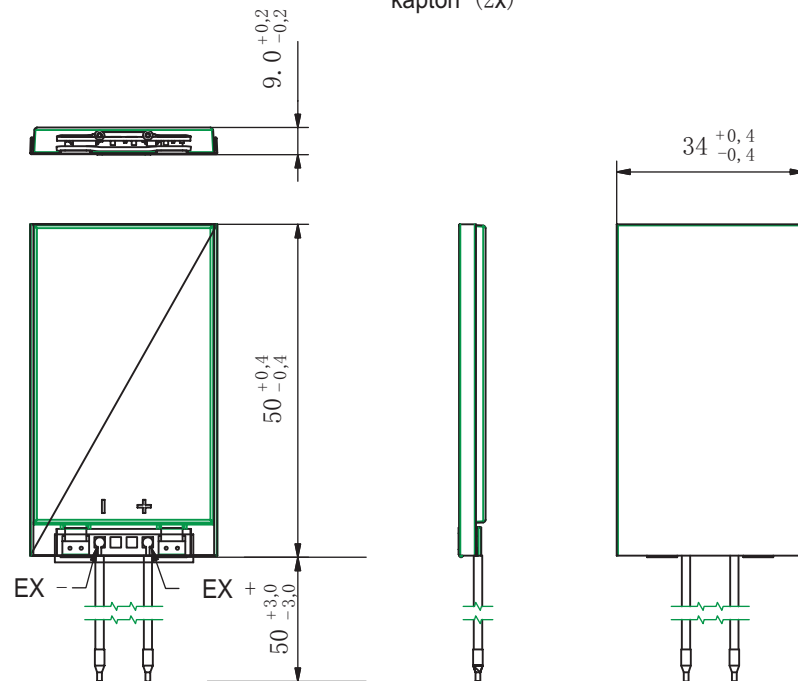
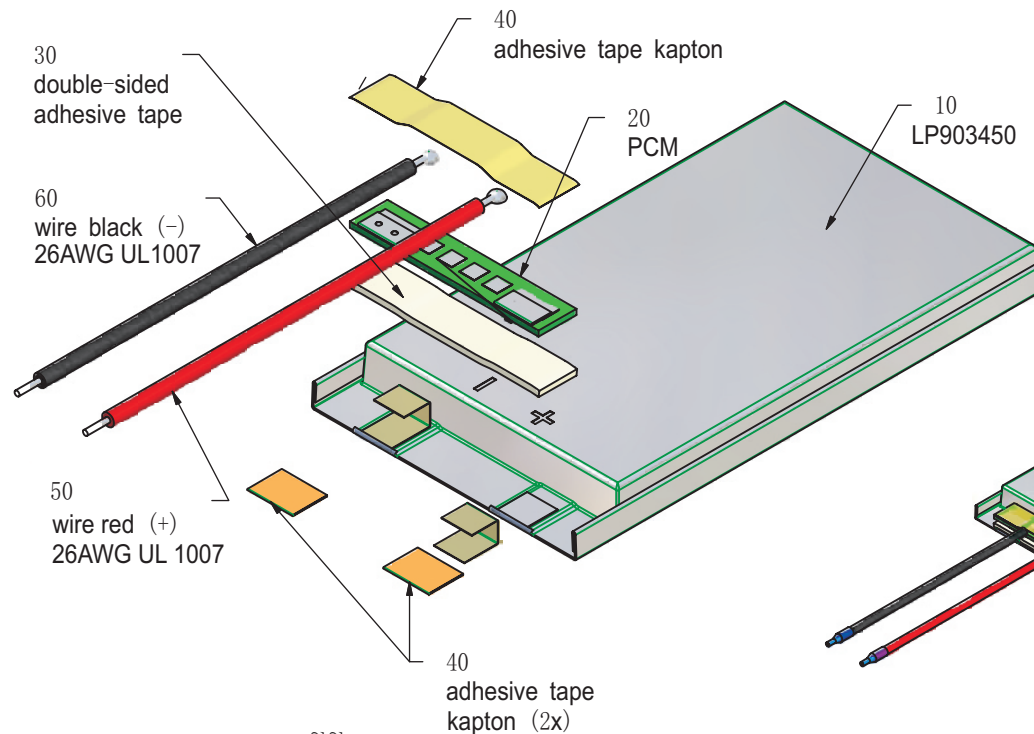
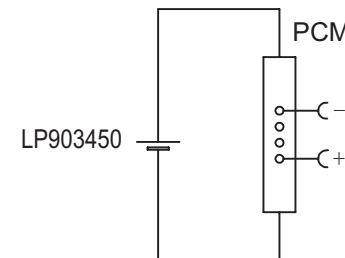
### Ambient conditions

Temperature range  
 Charge: 0 to +45°C  
 Discharge: -20 to +60°C  
 Charge retention/Storage: 1 year at -20 to 20°C >70%  
 3 month at -20 to 45°C >70%  
 1 month at -20 to 60°C >70%

### Safety

Please follow handling and Safety Precautions Poliflex.

### Circuit diagram



Index		Alteration		Date	Name
Projection:		Diese Mae werden besonders gepruft This dimensions are considered inspectable		Material	
Mae in mm		Freimatoleranzen		Date	
All dimensions in mm		Generaltoleranzen		Erst./Orig. 23.06.2013 Xie Qingfang	
Als Betriebsgeheimnis anvertraut, alle Rechte vorbehalten.		up to 6 ' 0,1		Bearb./Desig	
Proprietary data, company confidential, all rights reserved.		over 6 up to 30 ' 0,2		Gepr./Check 23.06.2013 Guo Daxia	
		over 30 up to 100 ' 0,3		Benennung/Designation	
		over 100 ' 0,5		LP903450	
		Origin:		Zchnng. / Dwg. Nr.	
				3 FD_3264_54	
				Index	

