



Specification Approval Sheet

Name: Poly-carbon monofluoride Lithium Battery

Model: BR1225AHT

SPEC: 3.0V / 50mAh

Specification Modification Records

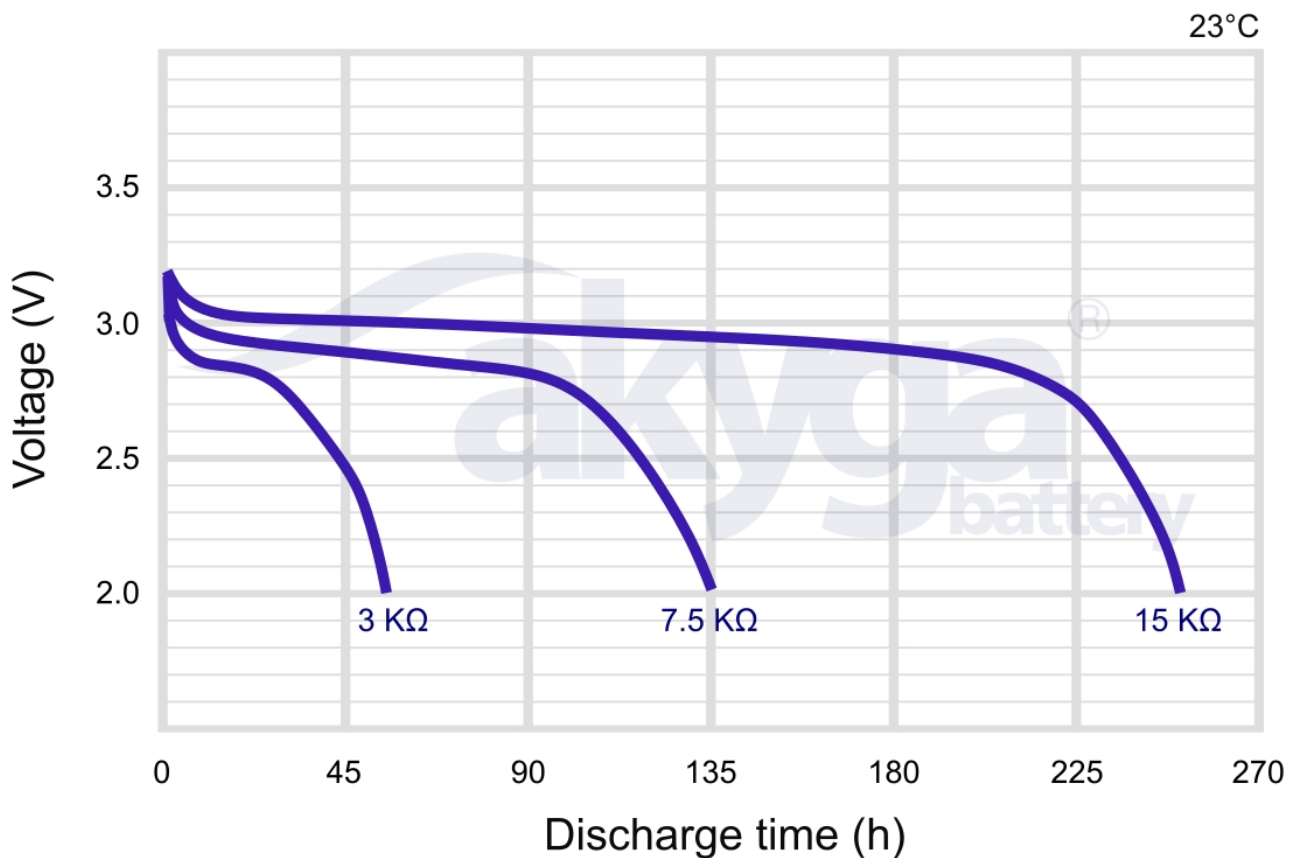
Modification Time	Descriptions	Issued Date	Approved By
	Release 1	2025-01-16	

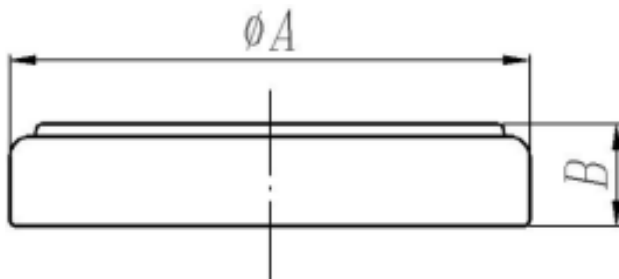
Brief Data Sheet Model: BR1225AHT

1. **Basic Specification** (Typical values relative to cells stored for three month at +23°C)

Item	Parameters	Remark
Model	BR1225A	Coin, Button type
Nominal Capacity (mAh)	50	at 15kΩ ±23°C, 2.0V cut off
Normal Voltage(V)	3.0	
Continuous Standard Load (kΩ)	15	
Nominal discharge current (mA)	0.2	
Max pulse current (mA)	3	
Operating temperature range (°C)	-40 ~ +125	
Storage temperature(recommended)	+30°C Max.	
Storage humidity range (%)	35 - 75	
Weight(g)	0.8	
Customized a variety of JST/MOLEX/ORTHER etc. connector, terminal. More information, please contact Akyga Battery.		

2. **Electrical Characteristics and Dimension**





Diameter (A) mm	Height (B) mm
12.0(-0.3)	2.5(-0.3)

a. Open/close circuit voltage

Item	Description	Value
Minimum average discharge time (15k Ω)	Initial period (within 60 days after production)	240 hrs
	After storage for 12 months	230 hrs
Open-circuit voltage V	Initial period (within 60 days after production)	3.10V-3.50V
	After storage for 12 months	3.10V-3.50V
Load-circuit voltage (7.5k Ω)	Initial period (within 60 days after production)	3.10V-3.50V
	After storage for 12 months	3.00V-3.50V
The leakage resistance		No leakage

b. Test method

No	ITEM	TEST METHODS
1	Dimensions	Using vernier caliper (accuracy ≥ 0.02) while avoiding short-circuit. One end of the caliper should be coated with an insulating material.
2	Off-load voltage	Using multimeter (accuracy $\geq 0.25\%$) internal resistance $\geq 1M\Omega$.
3	Instantaneous short-circuit current	Before the test, the battery should be placed under the condition of $20\pm 2^{\circ}C$, RH60 $\pm 15\%$ for more than 8 hours, and then measured at the same temperature Time of short-circuit should be less than 0.5 second and avoid repeated test within half an hour.
4	Appearance	Eyeballing
5	Discharge time	Taking nine cells under the condition of $20^{\circ}C\pm 2^{\circ}C$, RH60% $\pm 15\%$ place more than 8 hours, at the same temperature and humidity conditions for 30 k Ω resistance to 2.0 V, the average continuous discharge the battery discharge time should be within 60 days after the production, storage electric should be carried out within 14 days after the expiration of the storage
6	Leakage at high temperature	Stored under temperature ($125^{\circ}C$) for 1 hours, After returning to normal temperature, there is no leakage visually.
7	Over discharge Test	Take 9 batteries, only under the condition of $20^{\circ}C\pm 2^{\circ}C$, RH60% $\pm 15\%$, continuous discharge with 30 k Ω resistance to 1.2

		V, visual inspection.
--	--	-----------------------

3. Key feature

- Light weight, High voltage, High energy density
- Excellent stable discharge characteristics and outstanding temperature characteristics
- Excellent leakage resistance and excellent long-term reliability
- Low self-discharge rate (less than 2% after 1 year of storage at +25°C)
- EU2023/1542, CE certification, ROHS test compliance.

4. Main application

- Utility metering
- Military electronics
- Memory back-up
- Automatic meter reading
- Alarms and security devices
- Professional electronics
- Automotive electronics
- Toy and lighting

5. Warning

- Please do not recharge, short-circuit, disassemble, deform, heat or place the battery near a direct flame. Any of the above actions could cause it to ignite an explosion or become damaged.
- Please keep this battery out of the reach of children/infants. If children/infant happens to swallow the battery, consult a doctor Immediately.
- When storing the battery or throwing it away, be sure to cover it with tape.

6. Package

20 pcs/tray, 500 pcs/Plate/Package/film, 5000 pcs/box, 10,000 pcs/carton

Model	PCS/ Tray	PCS/ Package	PCS/ Carton	Package/ Carton	Size cm	Weight G/N
CR/BR1220(A/HT/HR)	25	500	10,000	20	28*28*26	10.35/9.3
CR/BR1225(A/HT/HR)	25	500	10,000	20	28*28*31	11.05/10
CR/BR1616(A/HT/HR)	25	500	10,000	20	28*28*24.5	12.7/11.7
CR/BR1620(A/HT/HR)	25	500	10,000	20	28*28*27	14.6/13.6
CR/BR1632(A/HT/HR)	25	500	8,000	16	28*28*31	16.45/15.5
CR/BR2016(A/HT/HR)	25	500	10,000	20	28*28*23.5	19/18
CR/BR2025(A/HT/HR)	25	500	8,000	16	28*28*31	21.6/20.6
CR/BR2032(A/HT/HR)	25	500	6,000	12	28*28*23.5	19.5/18.5
CR/BR2450(A/HT/HR)	25	200	2,400	12	34*29*20	18/17
CR/BR2016(A/HT/HR)	20	500	10,000	20	34*29*27	19/18
CR/BR2025(A/HT/HR)	20	500	6,000	12	34*29*23	16.7/15.7



Specification Approval sheet

CR/BR2032(A/HT/HR)	20	500	6,000	12	34*29*27	19.5/18.5
CR/BR2330(A/HT/HR)						

Note:

1. Any representations in this brochure concerning performance are for informational purposes only and are not construed as warranties either expressed or implied, of future performance.
2. Akyga Battery reserves the right to make changes without notice to any product specification herein, to make corrections, modifications, enhancements or other changes.
3. Akyga Battery or anyone on its behalf assumes no responsibility or liability for any errors or inaccuracies. Data sheet specifications and its information contained are intended to provide a product description only. "Nominal" parameters which may be included on Akyga Battery data sheets and/ or specifications can and do vary in different applications and actual performance may vary over time.
4. If the temperature is higher than the continuous use + 125 °C or below -40°C. Please contact Akyga Battery.