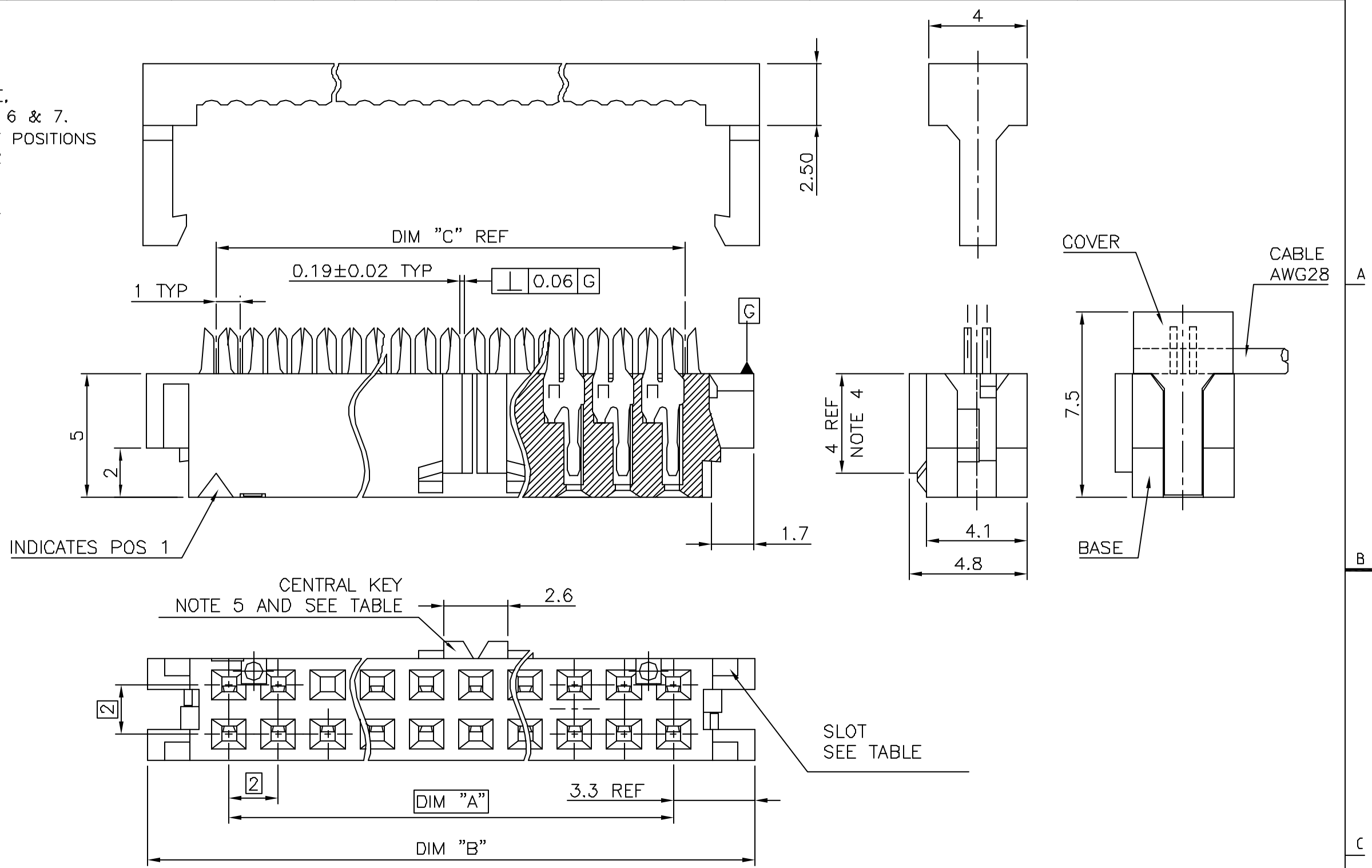


PRODUCT NUMBER

89361-YXXLF

LEAD FREE,  
SEE NOTE 6 & 7.  
TOTAL NB OF POSITIONS  
SEE SHEET 2  
FEATURES  
SEE SHEET 2



FCI  
FCIconnect.com

Copyright FCI

mat'l. code SEE NOTE 1				surface ISO 1302 ✓	tolerance ISO 406 ISO 101	projection mm	product family MINITEK		
ltr	ecn no	dr	date	tolerances unless otherwise specified		mm	title 2MM IDC 0.2µm Au		
E	V70494	MSC	97.06.02	angles	.X ±.3				
F	F20373	LMU	02.06.26	Linear	.XX ±.13	scale 6:1	dwg no 89361		
G	F20586	LMU	03.01.27	K ±2	.XXX ±.05				
H	F05-011C	JCO	05.01.17	dr	L.MULIN	02.06.26	sheet 1 of 2		
J	F05-041B	LMU	06.01.03	engr	J.COMPAGNON	02.06.26	size A3		
K	F06-021	LMU	06.07.03	chr			type CUSTOMER Drawing		
sheet index				revision	appd	JM.C	02.06.26		
				K					
				1					
				2					

PRODUCT NUMBER	POS.	DIM "A"	DIM "B"	DIM "C"
	2x1			
	2x2			
89361-X06	2x3	4	10.6	5
89361-X08	2x4	6	12.6	7
89361-X10	2x5	8	14.6	9
89361-X12	2x6	10	16.6	11
89361-X14	2x7	12	18.6	13
89361-X16	2x8	14	20.6	15
89361-X18	2x9	16	22.6	17
89361-X20	2x10	18	24.6	19
89361-X22	2x11	20	26.6	21
89361-X24	2x12	22	28.6	23
89361-X26	2x13	24	30.6	25
89361-X28	2x14	26	32.6	27
89361-X30	2x15	28	34.6	29
	2x16			
89361-X34	2x17	32	38.6	33
89361-X36	2x18	34	40.6	35
	2x19			
89361-X40	2x20	38	44.6	39
	2x21			
89361-X44	2x22	42	48.6	43
	2x23			
89361-X48	2x24	46	52.6	47
89361-X50	2x25	48	54.6	49

NOTES :

- 1 - MATERIAL : TERMINAL PHOSPHOR BRONZE  
BASE AND COVER G.F.PBT.UL94V-O.BLACK
- 2 - PLATING : GOLD 0.2µm Au MIN. ON CONTACT AREA  
NICKEL 1.27µm MIN UNDERPLATING ALL OVER
- 3 - RECOMMENDED CABLE SIZE : AWG28, STRANDED
- 4 - FRICTION LATCH BUMPS SIZE 2X3 AND 2X4 DO NOT HAVE TRIANGLE SHOWING POS#1.
- 5 - KEY WIDTH AND THICKNESS ARE REDUCED ON 2x3 SIZE CONNECTOR. (WIDTH=2.0, THICKNESS=4.6).
- 6 - 89361-XXXLF IS SIMILAR TO 89361-XXX, THE SUFFIX 'LF' IS ADDED FOR LEAD FREE IDENTIFICATION.
- 7 - THIS PRODUCT MEETS EUROPEAN UNION DIRECTIVES AND OTHER COUNTRY REGULATIONS AS PER GS-22-008.  
PACKAGING SPECIFICATION AS PER GS-14-920.

PRODUCT CODE	WITHOUT KEY		SLOT	WITH FRICTION LATCH BUMPS	
	CENTRAL	KEY		WITHOUT	WITH
89361-7XX					
89361-3XX					
89361-1XX					

mat'l. code		surface		tolerance		projection		product family	
SEE NOTE 1		ISO 1302 ✓		ISO 406 ISO 101				MINITEK	
ltr	ecn no	dr	date	tolerances unless otherwise specified		mm		title	
E	V70494	MSC	97.06.02	angles	.X ±.3	mm		2MM IDC	
F	F20373	LMU	02.06.26	Linear	.XX ±.13			0.2µm Au	
G	F20586	LMU	03.01.27	K ±2	.XXX ±.05	scale 6:1		dwg no	
H	F05-0110	JCO	05.01.17	dr	L.MULIN 02.06.26			sheet 2 of - size	
J	F05-0418	LMU	06.01.03	engr	J.COMPAGNON 02.06.26			89361 A3	
K	F06-0211	LMU	06.07.03	chr				type	
				appd	JM.C 02.06.26			CUSTOMER Drawing	
sheet index	revision sheet								