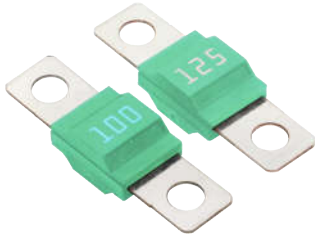




adler®

## AEP EV Fuse



### FEATURES:

- 32 VDC automotive fuse
- Rated Current: 20-200 A
- Breaking Capacity: 1.5 kA
- Installation Method: M5/M6 bolt installation
- Torque: M5:4.5±1 N·m; M6: 6±1 N·m
- Ref. to ISO 8820-5

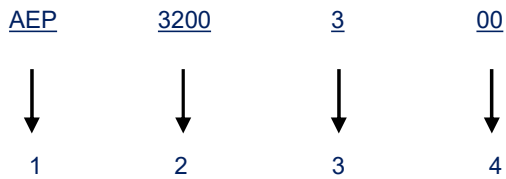
### ELECTRICAL SPECIFICATIONS

Part Number		Rated Current	Rated Voltage	Max. Voltage Drop(mV)	Wire (mm <sup>2</sup> )
M5 Bolt	M6 Bolt				
AEP2200300	AEP2200301	20 A	32 VDC	105	2.5
AEP2300300	AEP2300301	30 A		105	2.5
AEP2400300	AEP2400301	40 A		90	4
AEP2500300	AEP2500301	50 A		80	6
AEP2600300	AEP2600301	60 A		80	6
AEP2700300	AEP2700301	70 A		80	6
AEP2800300	AEP2800301	80 A		75	10
AEP3100300	AEP3100301	100 A		75	16
AEP3125300	AEP3125301	125 A		75	25
-	AEP3150301	150 A		70	25
-	AEP3175301	175 A		70	25
-	AEP3200301	200 A		70	25

### TIME VS CURRENT CHARACTERISTIC

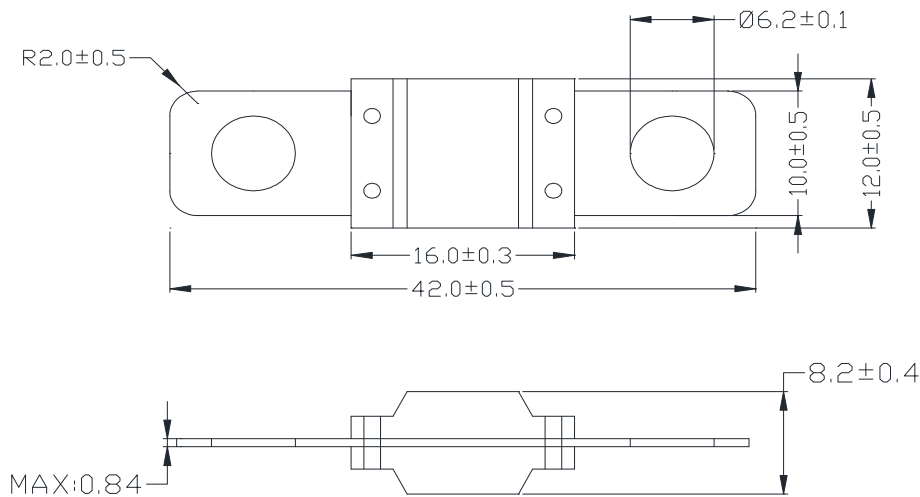
Rated Current	75%	100%	110%	150%	200%	300%	350%	500%	600%
20-125 A	--	>100 h	>4 h	90-3600 s	3-100 s	0.3-3 s	--	0.1-1 s	--
150-200 A	>100 h	--	--	--	1-15 s	--	0.3-5 s	--	0.1-1 s

**PART NUMBER SYSTEM**

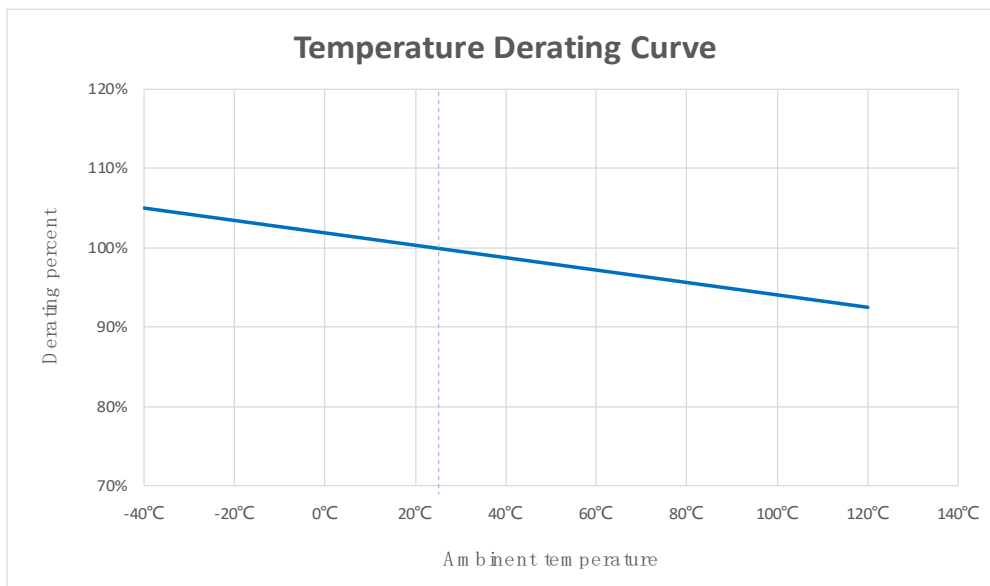


- 1 .....Product Series ..... AEP
- 2 ..... Ampere Code ..... 200 A (see ampere code column of electrical specifications)
- 3 ..... Rated Voltage ..... 3: 32V
- 4 ..... Supplementary Code ..... 00: M5 Bolt; 01: M6 Bolt

**DIMENSIONS (mm)**



**TEMPERATURE DERATING CURVE**



TIME CURRENT CURVE

