

GF Series

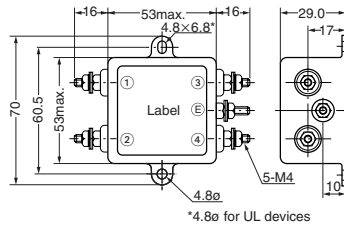
[RoHS Compliant]



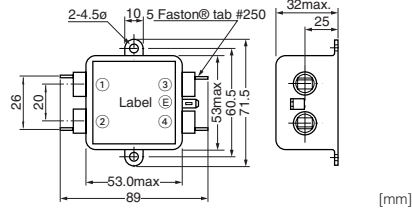
Model	Rated voltage AC/DC (V)	Rated current AC/DC (A)	Withstanding voltage 1 min., line to ground AC (V)	Insulation resistance 500VDC 1 min., line to ground (MΩ) min.	Leakage current 250V/60Hz, (mA) max.	Voltage drop 50Hz, (V) max.	Self-temperature rise (K) max.	Operating temperature range (°C)	Certified standard	Weight (g)
GF-2050	250	5	1500	300	1	1.5	30	-20 to +60		130
GF-205U	250	5	1500	300	1	1.5	30	-20 to +60	UL	130
GF-2100	250	10	1500	300	1	1.5	30	-20 to +60		140
GF-210U	250	10	1500	300	1	1.5	30	-20 to +60	UL	140
GF-2150	250	15	1500	300	1	1.5	30	-20 to +60		140
GF-2200	250	20	1500	300	1	1.5	30	-20 to +60		150
GF-220U	250	20	1500	300	1	1.5	30	-20 to +60	UL	150
GF-205E	250	5	1500	300	1	1.5	30	-20 to +55	UL, CSA	130

Shape and Dimensions

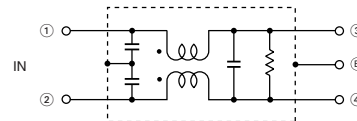
●GE Series (Except Type E)



●GF-E Type

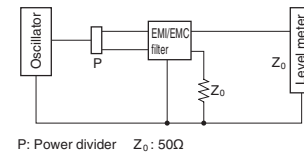


Circuit Diagram

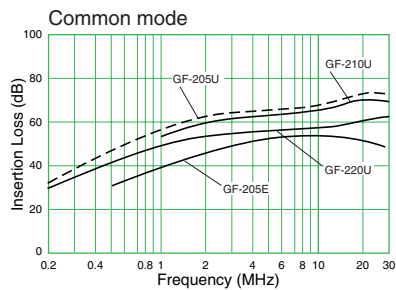


Measuring Circuit

●Common mode



Attenuation (Static Characteristics)



- All specifications in this catalog and production status of products are subject to change without notice. Prior to the purchase, please contact NEC TOKIN for updated product data.
- Please request for a specification sheet for detailed product data prior to the purchase.
- Before using the product in this catalog, please read "Precautions" and other safety precautions listed in the printed version catalog.