

DISPLAYTRONIC

SPECIFICATIONS FOR LIQUID CRYSTAL DISPLAY

AGM1232E SERIES GRAPHIC MODULE VER1.1

CUSTOMER APPROVAL	
1.POLARIZER OPTIONS: <input type="checkbox"/> R=REFLECTIVE <input type="checkbox"/> F=TRANSFLECTIVE <input type="checkbox"/> N=TRANSMISSIVE NEGATIVE <input type="checkbox"/> M=TRANSMISSIVE POSITIVE	
2.BACKLIGHT OPTIONS: <input type="checkbox"/> N=NONE <input type="checkbox"/> E=EL <input type="checkbox"/> L=LED (Y-G) <input type="checkbox"/> C=CCFL	
3. BACKLIGHT COLOR: <input type="checkbox"/> A= AMBER <input type="checkbox"/> B= BLUE <input type="checkbox"/> G= GREEN <input type="checkbox"/> W=WHITE <input type="checkbox"/> R= RED <input type="checkbox"/> RGB= RED+GREEN+BLUE	
4.FLUID OPTIONS: <input type="checkbox"/> T=TN <input type="checkbox"/> F=FSTN <input type="checkbox"/> Y=STN-YELLOW GREEN <input type="checkbox"/> G=STN-GRAY <input type="checkbox"/> B=STN-BLUE	
5. VIEWING DIRECTION: <input type="checkbox"/> B=BOTTOM VIEW(6 O’CLOCK) <input type="checkbox"/> T=TOP VIEW(12 O’CLOCK)	
6.TEMPERATURE RANGE: <input type="checkbox"/> S=STANDARD TEMPERATURE RANGE <input type="checkbox"/> H=DUAL POWER,WIDE TEMPERATURE RANGE <input type="checkbox"/> W=SINGLE POWER,WIDE TEMPERATURE RANGE	
7.OTHERS REQUIREMENT:	
※ PART NO. : _____	
APPROVAL	COMPANY CHOP
CUSTOMER COMMENTS	

DISPLAYTRONIC ENGINEERING APPROVAL		
DESIGN BY	CHECKED BY	APPROVED BY

--	--	--

REVISION RECORD

REVISION	REVISION DATE	PAGE	CONTENTS
----------	---------------	------	----------

AGM1232E SERIES GRAPHIC MODULE VER1.1

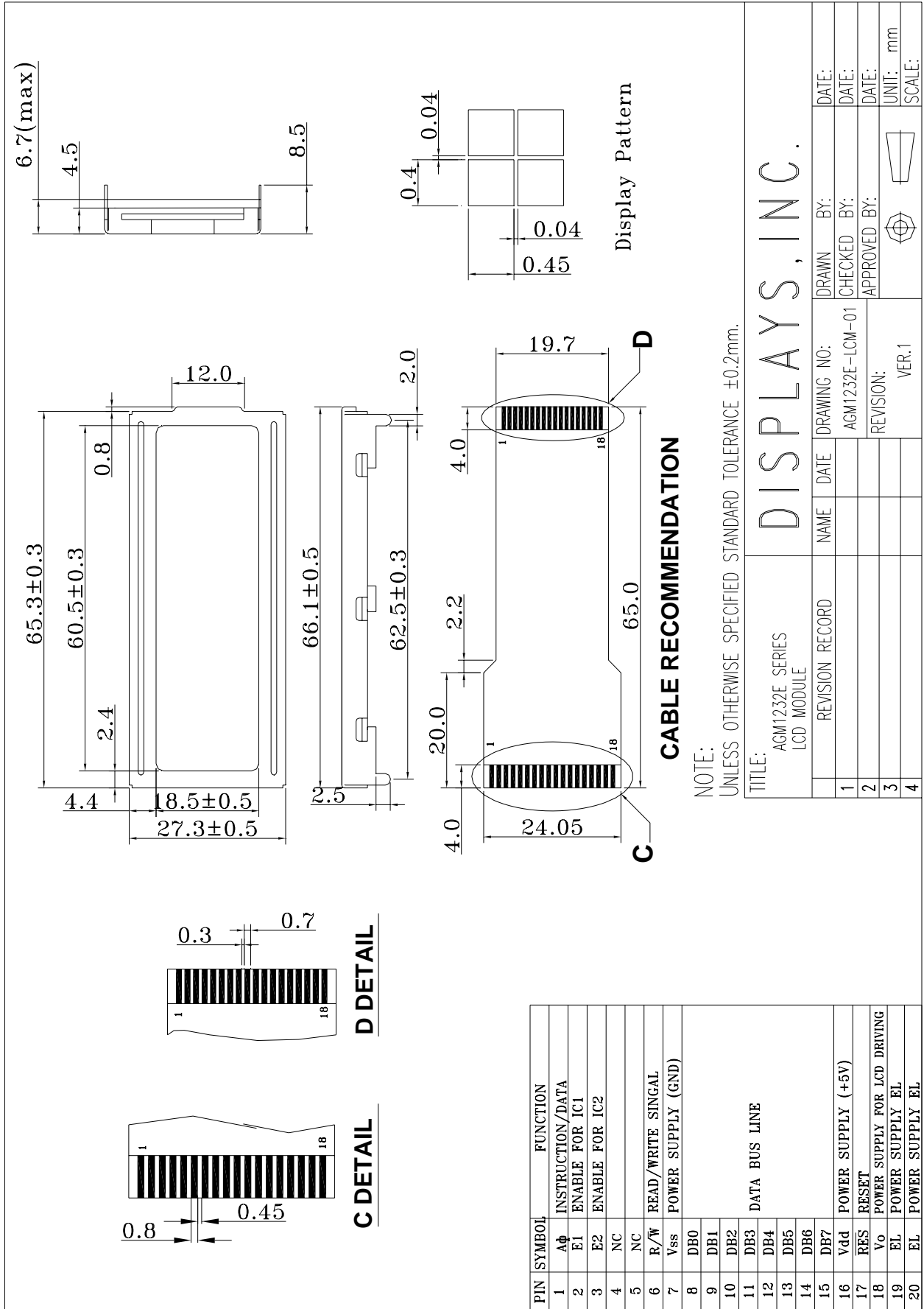
VER1.1	15/6-2006		MODIFY THE COVER,ADD CONTENT AND REVISION RECORD.
--------	-----------	--	---

※ CONTENTS

1.0 MECHANICAL DIAGRAM

- 2.0 MECHANICAL SPECS
- 3.0 ABSOLUTE MAXIMUM RATINGS
- 4.0 ELECTRICAL CHARACTERISTICS
- 5.0 OPTICAL CHARACTERISTICS
- 6.0 BLOCK DIAGRAM
- 7.0 PIN ASSIGNMENT
- 8.0 POWER SUPPLY
- 9.0 TIMING CHARACTERISTICS
- 10.0 RELIABILITY TEST
- 10.0 RELATION BETWEEN DISPLAY PATTERN AND DRIVERS
- 12.0 DISPLAY CONTROL INSTRUCTION

1.0 MECHANICAL DIAGRAM



2.0 MECHANICAL SPECS

AGM1232E SERIES GRAPHIC MODULE VER1.1

1. Item	Description
1. Overall Module Size	66.1mm(W) x 27.3mm(H) x max 8.5mm(D)
2. Dot Size	0.40mm(W) x 0.45mm(H)
3. Dot Pitch	0.44mm(W) x 0.49mm(H)
4. Duty	1/32
5. Controller IC	SED1520FOA/DOA
6. LC Fluid Options	STN, FSTN
7. Polarizer Options	Reflective, Transflective, Transmissive
8. Backlight Options	EL LED
9. Temperature Range Options	Standard (0°C ~ 50°C), Wide (-20°C ~ 70°C)

3.0 ABSOLUTE MAXIMUM RATINGS

Item	Symbol	Min	Typ	Max	Unit
Operating temperature (Standard)	Top	0	-	50	°C
Storage temperature (Standard)	Tst	-10	-	60	°C
Operating temperature (Wide temperature)	Top	-20	-	70	°C
Storage temperature (Wide temperature)	Tst	-30	-	80	°C
Input voltage	Vin	Vss		Vdd	V
Supply voltage for logic	Vdd- Vss	-0.3	-	7.0	V
Supply voltage for LCD drive	Vdd- Vo	3.5		13.0	V

4.0 ELECTRICAL CHARACTERISTICS

Item	Symbol	Condition	Min	Typ	Max	Unit
Input voltage (high)	Vih	H level	0.8Vdd	-	Vdd	V
Input voltage (low)	Vil	L level	0	-	0.2Vdd	V
Recommended LC Driving Voltage	Vdd -Vo	-20°C	-		9.5	V
		25°C		6.5	-	
		70°C	4.5		-	
Power Supply Current	Idd	Vdd=5.0V	-	-	13.0	mA
LED Power Supply Voltage	Vfled	IF=150MA	4.0	4.1	4.2	V
LED Power Supply Current	Ifled	VF=4.1V	-	150	200	mA
EL	VEL			110		V(AC)

NOTE: Vfled = the voltage between LED 'A' and 'K'

5.0 OPTICAL CHARACTERISTICS

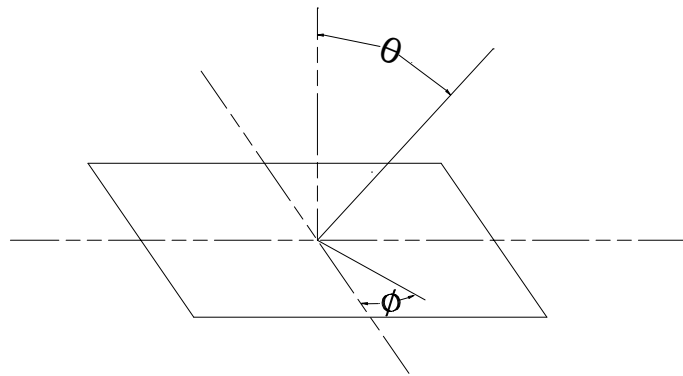
AGM1232E SERIES GRAPHIC MODULE VER1.1

Item Mode		Cr (Contrast Ratio)		θ (Viewing Angle)		ϕ (Viewing Angle)	
		25°C		25°C		25°C	
		MIN.	TYP.	MIN	TYP.	MIN	TYP.
R	A	2.8	3.05	80°	85°	-	35°
	B	7.10	7.70	80°	85°	-	35°
	C	-	-	-	-	-	-
S	A	2.49	2.99	80°	85°	-	35°
	B	7.05	7.55	80°	85°	-	35°
	C	-	-	-	-	-	-

Note:

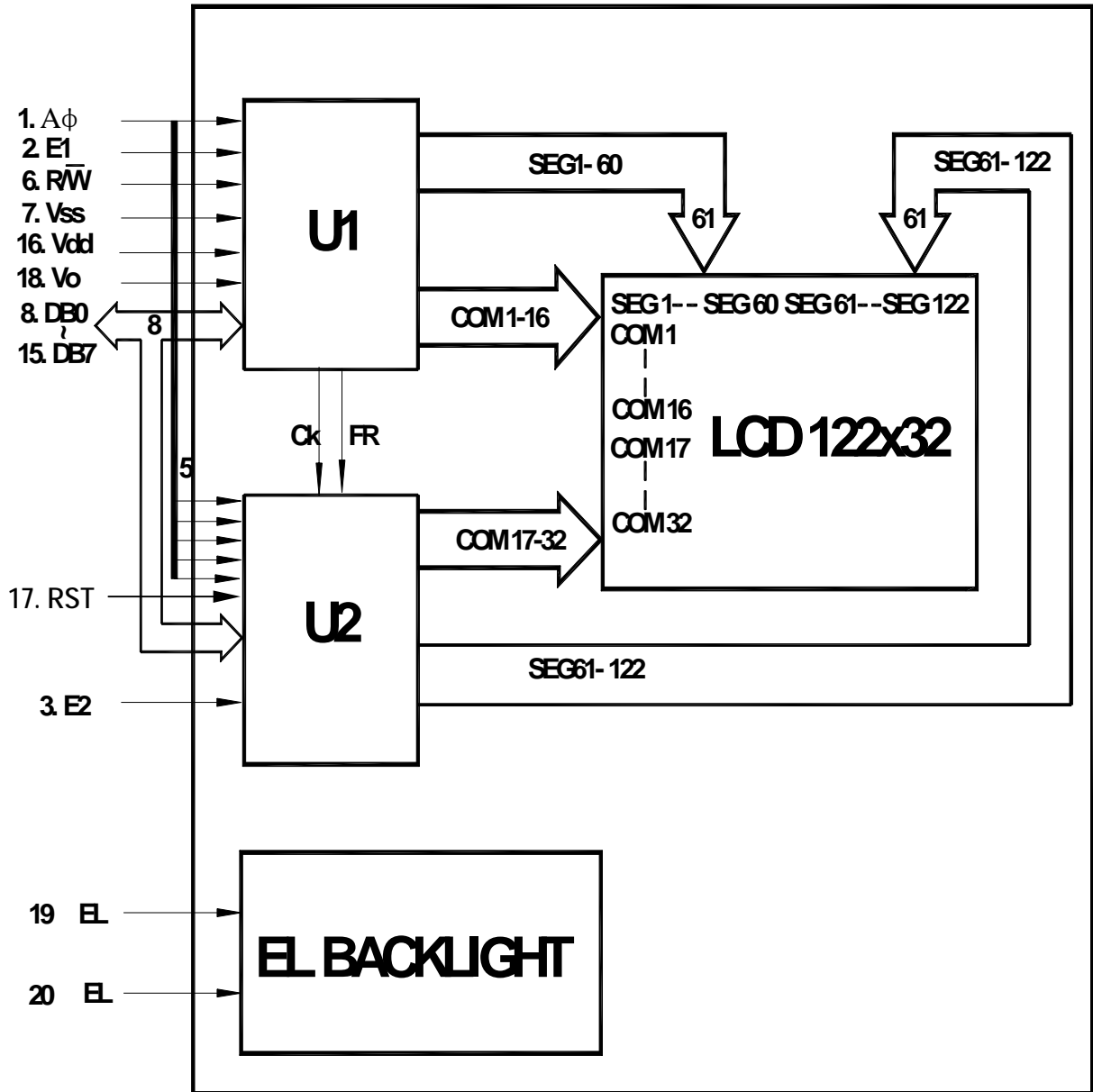
- R: Reflective
- S: Transflective
- A: STN Gray
- B: STN Yellow
- C: FSTN

At: $\phi = 0^\circ, \theta = 0^\circ$



Item	Symbol	Condition	Min	Typ	Max	Unit
Response time (rise)	Tr	25 °C	-	80	160	ms
Response time (fall)	Tf	25°C	-	50	100	ns

6.0 BLOCK DIAGRAM

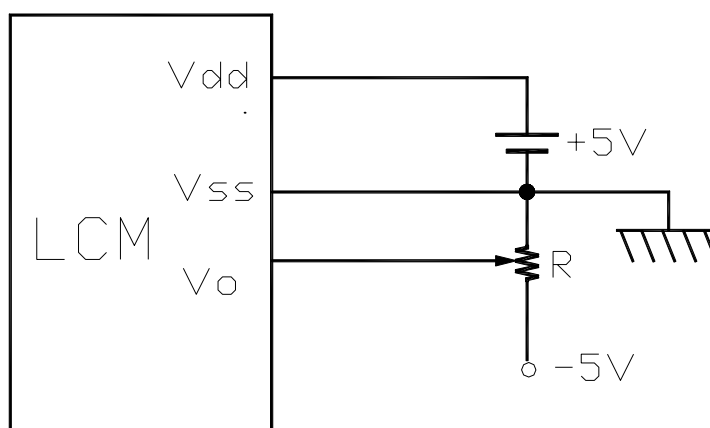


7.0 PIN ASSIGNMENT

AGM1232E SERIES GRAPHIC MODULE VER1.1

Pin No.	Symbol	Function	Level
1	AØ	Instruction/Data	H/L
2	E1	Enable for IC1	H/L
3	E2	Enable for IC2	H/L
4	NC		
5	NC		
6	R/W	H: Data read L: Data write	H/L
7	Vss	Ground	-
8	DB0	Data bit 0	H/L
9	DB1	Data bit 1	H/L
10	DB2	Data bit 2	H/L
11	DB3	Data bit 3	H/L
12	DB4	Data bit 4	H/L
13	DB5	Data bit 5	H/L
14	DB6	Data bit 6	H/L
15	DB7	Data bit 7	H/L
16	Vdd	Power Supply For Logic Circuit	
17	RST	Reset	
18	Vo	Power Supply For LCD Driving	
19	EL(LED=)	Power Supply for EL	-
20	EL(LED-)	Power Supply for EL	-

8.0 POWER SUPPLY



9.0 TIMING CHARACTERISTICS

AGM1232E SERIES GRAPHIC MODULE VER1.1

Item	Symbol	Test Condition	Min.	Tvp.	Max.	Unit
System cycle time	t_{CYC6}	Fig. a, Fig. b	1000	-	-	ns
Address setup time	t_{AW6}	Fig. a, Fig. b	20	-	-	ns
Address hold time	t_{AH6}	Fig. a, Fig. b	10	-	-	ns
Data hold time	t_{DH6}	Fig. a	10	-	-	ns
Data setup time	t_{DS6}	Fig. a	80	-	-	ns
Output disable time	t_{OH6}	CL=100 pF	10	-	60	ns
Access time	t_{ACC6}		-	-	90	
Enable pulsewidth	Read	T_{EW}	100			
	Write		80			
Rise and fall time	T_r, T_f	Fig. a, Fig. b	-	-	15	ns

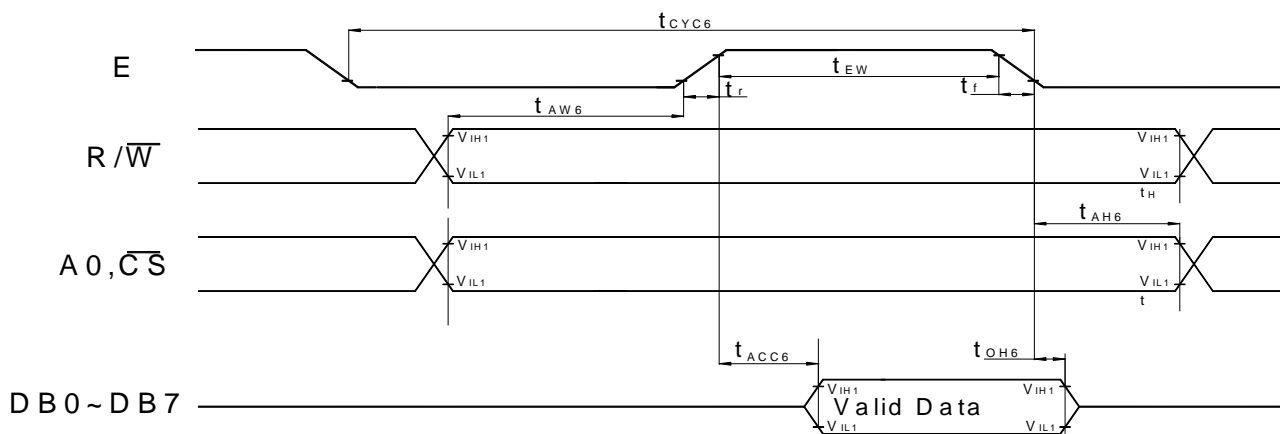


Fig. a Interface timing (data Read)

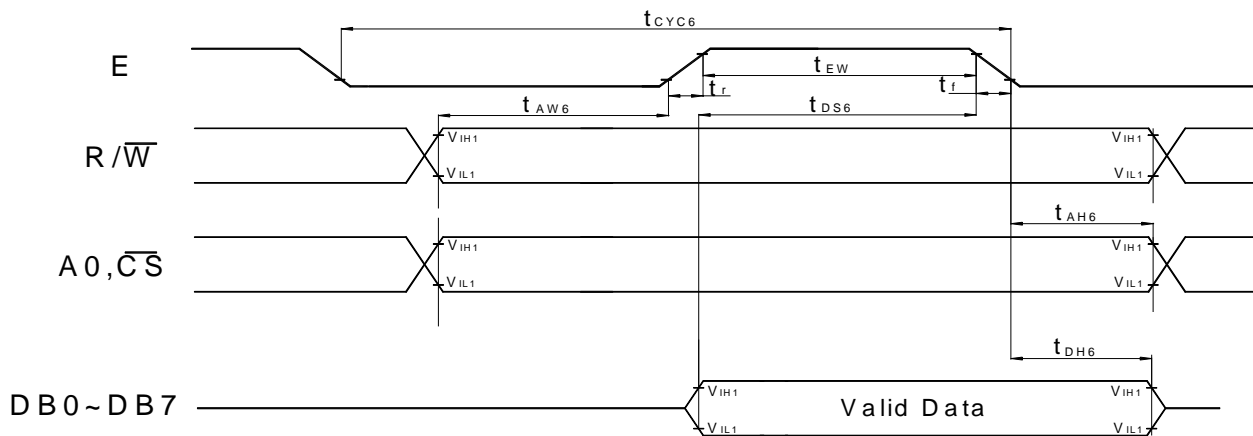


Fig. b Interface timing (data Write)

10.0 RELIABILITY TEST

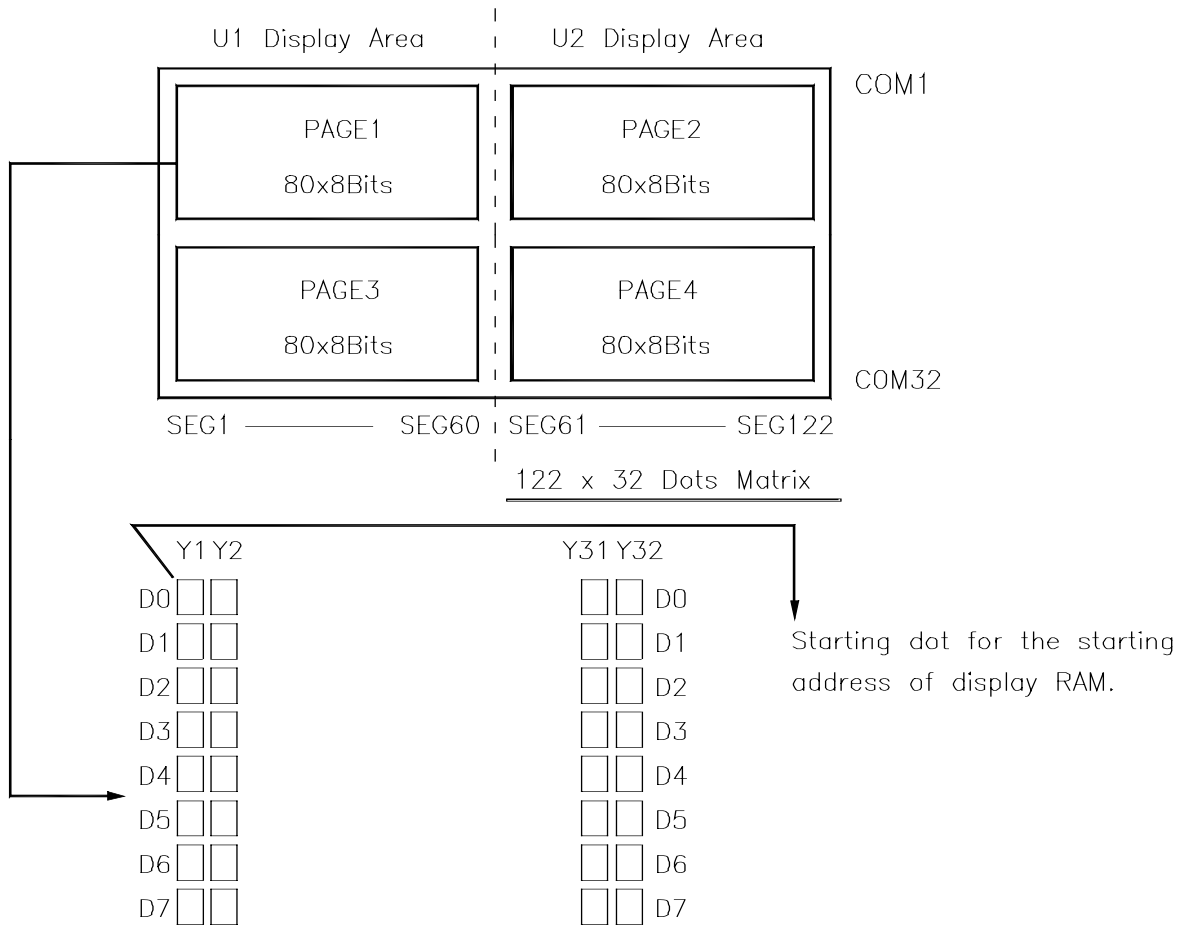
AGM1232E SERIES GRAPHIC MODULE VER1.1

Storage Condition	Content	Evaluations and Assessment*			
		Current Consumption	Oozing	Contrast	Other Appearances
Operation at high temperature and humidity	40°C,90% RH,240hrs	Twice initial value or less	none	More than 80% of initial value	No abnormality
High temperature storage	60°C, 240hrs	Twice initial value or less	none	More than 80% of initial value	No abnormality
Low temperature storage	-20°C, 240hrs	Twice initial value or less		More than 80% of initial value	No abnormality

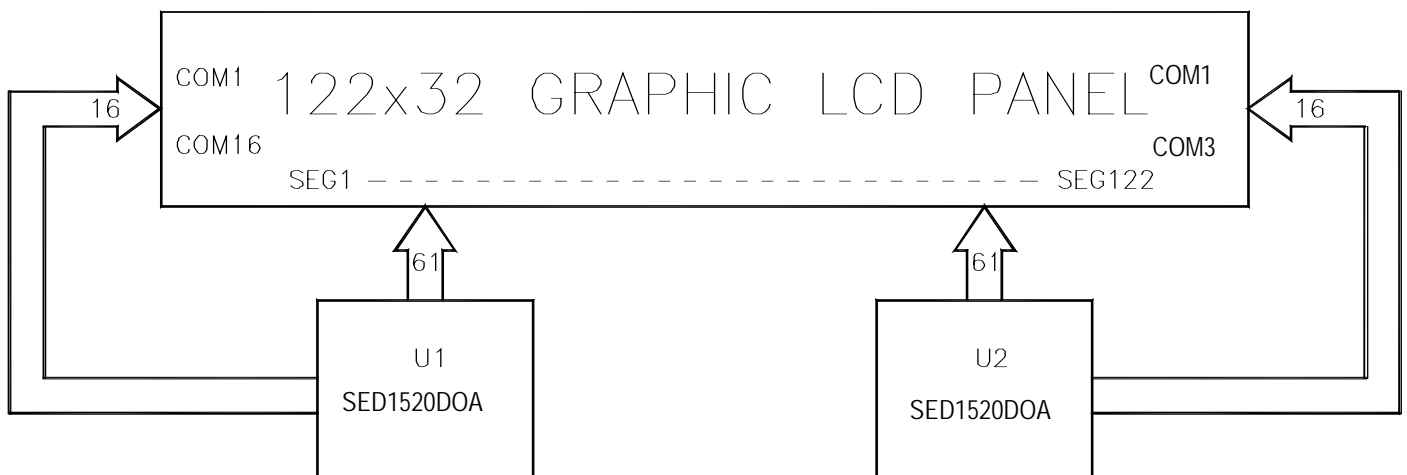
*Evaluations and assessment to be made two hours after returning to room temperature (25°C±5°C).

*The LCDs subjected to the test must not have dew condensation.

11.0 RELATION BETWEEN DISPLAY PATTERN AND DRIVERS



Each segment driver has 4 pages RAM, and each page has 80x8 bits RAM.
 D0~D7 are 8 bits transmitted data, where D0 is LSB and D7 is MSB.



12.0 DISPLAY CONTROL INSTRUCTION

AGM1232E SERIES GRAPHIC MODULE VER1.1

The display control instructions control the internal state of the SED1520DOA/FOA. Instructions are received from MPU to SED1520DOA/FOA for the display control.

INSTRUCTION	A0	RD	R/W	DB7	DB6	DB5	DB4	DB3	DB2	DB1	DB0	DESCRIPTION
Display ON/OFF	0	1	0	1	0	1	0	1	1	1	1/0	Turns display on or off. 0: OFF. 1:ON
Set Page Address	0	1	0	1	0	1	1	1	0	Page (0~3)		Sets display RAM Page in Page address register
Set Column (Segment address)	0	1	0	0	Column address (0~79)						Sets display RAM column address in column address register	
Display Start Line	0	1	0	1	1	0	Display start line (0~31)					Indicates the display data RAM displayed at the top of the screen.
Status Read	0	0	1	BUSY	ADC	ON/OFF	RESET	0	0	0	0	Reads the following status: BUSY 0: Ready 1: Busy ADC 1: CW output 0: CCW output ON/OFF 0: Display on 1: Display off RESET 0: Normal 1: Being Reset
Write Display Data	1	1	0	Write Data								Writes data DB0~DB7 from bus into display data RAM.
Read Display Data	1	0	1	Read Data								Reads data DB0~DB7 from display data RAM onto the data bus.
Select ADC	0	1	0	1	0	1	0	0	0	0	0/1	0: CW output,1: CCW output
Static drive ON/OFF	0	1	0	1	0	1	0	0	1	0	0/1	1: Static drive, 0: Normal driving
Select duty	0	1	0	1	0	1	0	1	0	0	0/1	Select LCD duty cycle 1:1/32, 0: 1/16
Read-Modify-Wreti	0	1	0	1	1	1	0	0	0	0	0	Read-Modify-write ON
END	0	1	0	1	1	1	0	1	1	1	0	Read-Modify-write OFF
Reset	0	1	0	1	1	1	0	0	0	1	0	Software reset