



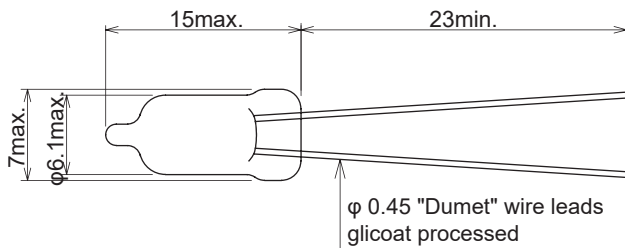
Features

- Fast response time
- Large surge withstand capability 2,000A
- Protects electronic components from impulse breakdown voltage
- Small inter-terminal capacity

Applications

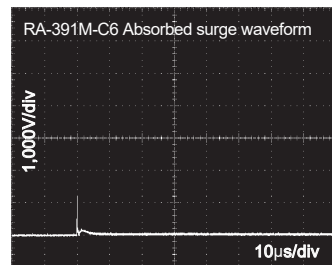
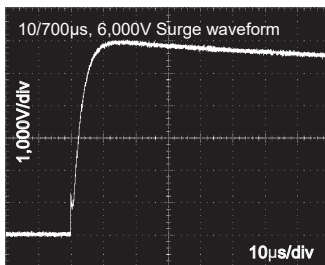
- xDSL modems, splitters, BS tuner, CRT, VCR, telephone, modems, car audio and GPS

Dimensions

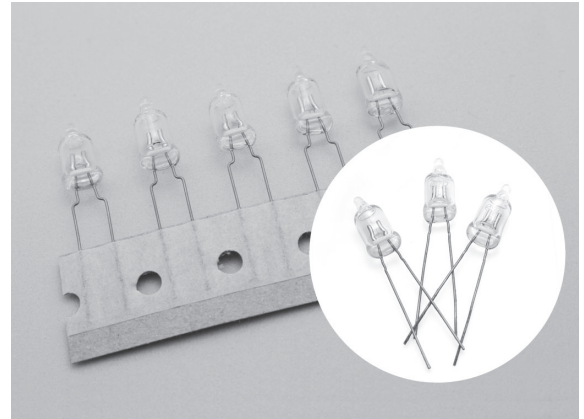


Unit: mm

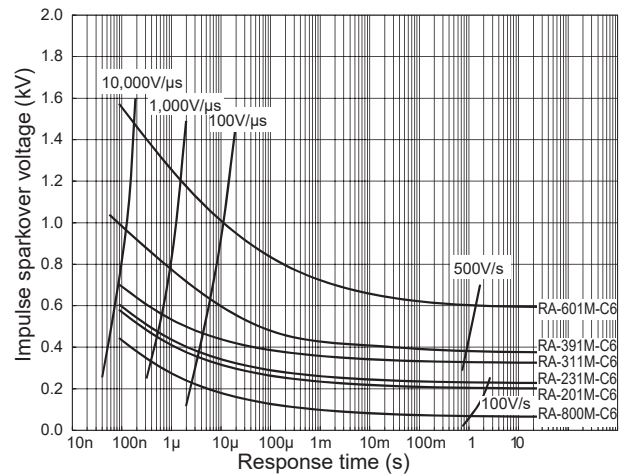
Impulse Absorption Characteristics



Safety Standard		File No.
UL	:UL497B	E139599
UL	:UL1449 4th.	E322107
cUL	:C22.2 No.269.5	
TÜV	:EN62368-1	J50114145



V-t Characteristics



Electrical Specifications

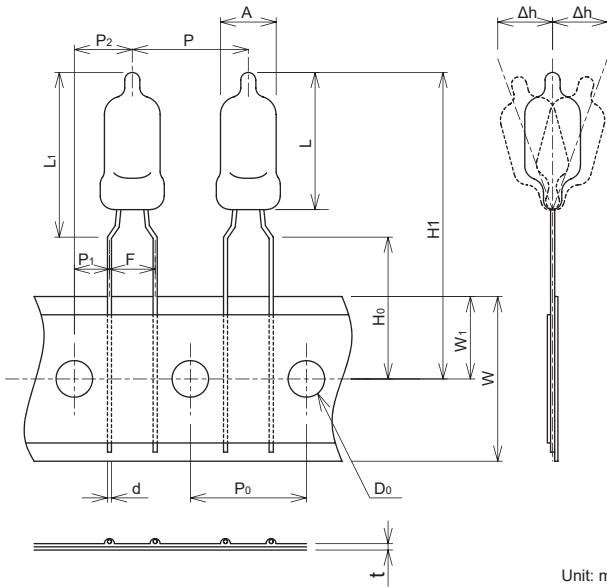
Model Number P: Without Marking M: Marking	DC Breakdown Voltage (V)	Impulse Sparkover Voltage 1.2/50µs (V) max.		Insulation Resistance (MΩ) min.	Electrostatic Capacitance 1MHz (pF) max.	Impulse Life Test 8/20µs 100A	Impulse Current Capacity 8/20µs (A)	Withstanding Voltage
		Applied Voltage	Specification					
RA-800P/M-C6	80 (64 ~ 96)	-	-	1,000 (DC50V)	1.0	300 times	2,000	-
RA-201P/M-C6	200 (160 ~ 240)	-	-	1,000 (DC100V)				
RA-231P/M-C6	230 (184 ~ 276)	1kV/10µs	600V max.					
RA-311P/M-C6	310 (264 ~ 356)							
RA-351P/M-C6	350 (280 ~ 420)							
RA-391P/M-C6	390 (312 ~ 468)							
RA-501P/M-C6	500 (400 ~ 600)							
RA-601P/M-C6	600 (480 ~ 720)			-				
RA-102P/M-C6	1,000 (800 ~ 1,200)	1.2/50µs 5kV	5kV max.	1,000 (DC500V)				
RA-152P/M-C6	1,500 (1,200 ~ 1,800)							
RA-272M-C6	2,700 (2,160 ~ 3,240)*							
RA-302M-C6	3,000 (2,400 ~ 3,600)*							
RA-302M-C6(AC)	3,000 (2,700 ~ 3,900)*							

* Reference Value

Operating Temperature: -40~+85C



● Taping Dimensions (RA-XXXP/M-C6-Y)

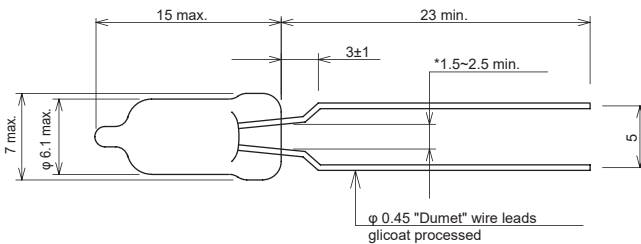


Unit: mm

Description		Symbol	Dimension (mm)
RA	Height	L	15.0 max.
	Lamp Diameter	A	φ 6.1 max.
	Lead Diameter	d	φ 0.45±0.05
Height from PCB top		L ₁	17.0 max.
Lamp pitch		P	12.7±1.0
Hole pitch		P ₀	12.7±0.3*
Hole position		P ₁	3.85±0.7
		P ₂	6.35±1.3
Lead pitch		F	5.0 ^{+0.6} _{-0.2}
Declining		Δh	±2.0
Paper width		W	18.0±0.5
Hole position		W ₁	9.0±0.5
Lead clinch height		H ₀	16.0±0.5
Product height		H ₁	(33.5)
Hole diameter		D ₀	φ 4.0±0.2
Paper thickness		t	0.7±0.2

* Accumulative pitch error: 4 pitches 50.8±0.6mm, 20 pitches 254±1.5mm

● Forming Dimensions (RA-XXXP/M-C6-F)

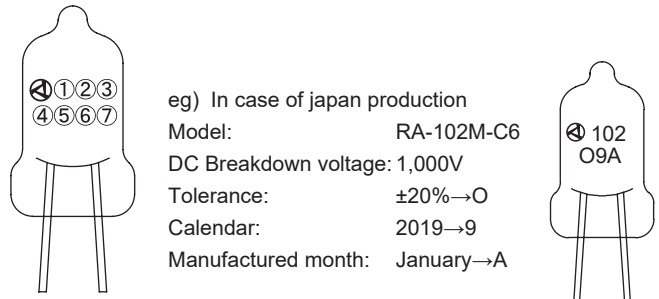


Unit: mm

● Packing Quantity per Carton

RA-C6-Y: 2,000 pcs

● Description of marking



- ①②③..... DC Breakdown Voltage ①②×10^③
- ④..... T : China production
None : Japan production
- ⑤..... Tolerance ±20% (Symbol O)*1
- ⑥..... Identification of manufacture year eg.) 2019→9
- ⑦..... Manufacture month (see below)

*1 Tolerance of 311 ±15% (Symbol M)

Month	1	2	3	4	5	6	7	8	9	10	11	12
Symbol	A	B	D	E	F	G	H	J	K	L	M	N

Safety Standard

UL497B	UL1449	cUL	TÜV	Model Number
○	-	-	-	RA-800P/M-C6
○	-	-	-	RA-201P/M-C6
○	-	-	-	RA-231P/M-C6
○	○ ^{*1}	-	-	RA-311P/M-C6
○	○ ^{*1}	-	-	RA-351P/M-C6
○	○ ^{*1}	-	-	RA-391P/M-C6
○	○ ^{*1}	-	-	RA-501P/M-C6
-	○ ^{*1} ₂	-	-	RA-601P/M-C6
-	○ ^{*1} ₂	-	-	RA-102P/M-C6
-	○ ^{*1} ₂	-	-	RA-152P/M-C6
-	○ ^{*1} ₂	○ ^{*1}	○ ^{*3}	RA-272M-C6
-	○ ^{*1} ₂	○ ^{*1} ₂	○ ^{*4}	RA-302M-C6
-	○ ^{*1} ₂	○ ^{*1} ₂	○ ^{*4}	RA-302M-C6(AC)

Rated voltage <A>: Approved if it is connected to UL approved varistor .

	A	B
*1	AC125V	V1.0≥270V, D≥φ5mm
*2	AC250V	V1.0≥390V, D≥φ7mm
*3	AC125V	V1.0≥470V, D≥φ5mm
*4	AC125V / AC250V	V1.0≥470V, D≥φ5mm