



# SUP-EH SERIES

# NOISE FILTERS



## Features

- Leak current lower than 10 $\mu$ A ( 250Vac, 60Hz ), The best for medical equipment.
- High performance magnetics for pulse absorption.
- High insertion loss characteristics.

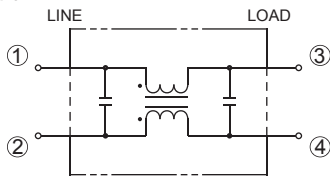
## Applications

- Medical equipments, Printers, Copiers, Office appliances, Measuring devices and Control systems.

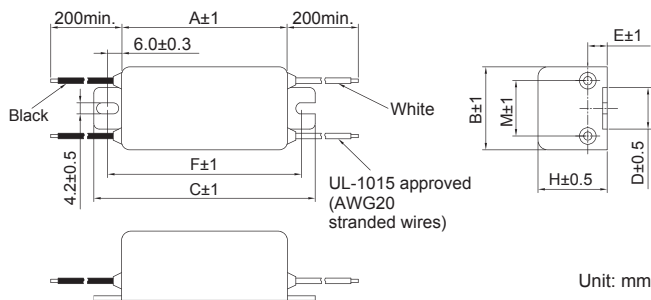
### SUP-E□H Series (PVC wire) (1~3A)



#### • Circuit



#### • Dimensions



Model Number	A	B	C	D	E	F	H	M
SUP-E1H	60	30	80	15	7.0	70	25	20
SUP-E2H		40		20				25
SUP-E3H								25

## Electrical Specifications

Safety Standard	Model Number	Rated Current (A)	Test Voltage	Insulation Resistance	Leakage Current max.	Voltage Drop max.	Temperature Rise max.	Operating Temperature (°C)	Insertion losses		Weight typ.(g)
									Normal Mode (MHz)	Common Mode (MHz)	
	SUP-E1H	1	Line to Line 1,100Vac 50/60Hz 60sec	Line to Line 3,000M $\Omega$ min	10 $\mu$ A (at 250Vac 60Hz)	1.0Vac	30K	-25 ~ +55 (85°C with Temp.rise)	0.7 ~ 30	-	100
	SUP-E2H	2								-	
	SUP-E3H	3								-	
	SUP-E5H(1/2)	5	Line to Case 2,240Vac 50/60Hz 60sec	Line to Case 6,000M $\Omega$ min (at 500Vdc)			35K	-25 ~ +50 (85°C with Temp. rise)	0.8 ~ 20	-	270
	SUP-E10H(1/2)	10							1.0 ~ 30	-	
	SUP-E15H(1/2)	15							1.5 ~ 30	-	
	SUP-E20H(1/2)	20								-	

Guaranteed attenuation is more than 40dB.



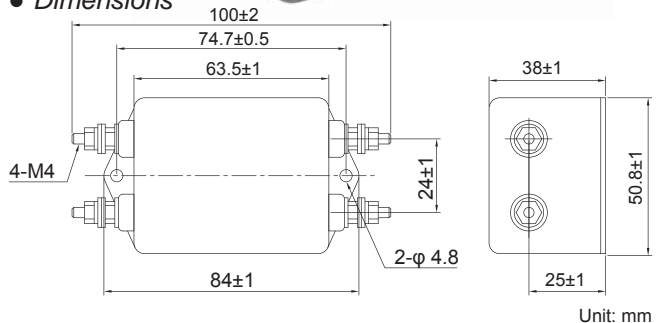
Safety Standard	File No.*
UL :UL-1283	E78644
CSA :C22.2、No.8-M1986	LR60681
SEMKO :EN60939	SE/0142-13 SE/0142-14

UL-544 is the standard of medical equipments.  
The "ENEC" mark is a common European product certification mark based on testing to harmonised European safety standard.  
\*File No. may be revised without notice. Please contact us at the time of your request for certifications.

SUP-E□H Series (Screw) - 0 (Faston® terminal)  
(5~15A, 20A) - 2 (Solder terminal)



#### • Dimensions



#### • Static characteristics (Representative example)

