

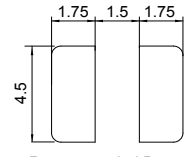
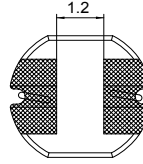
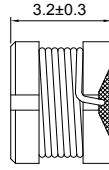
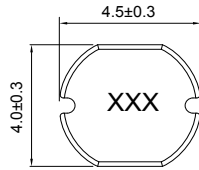
# CSN043D Series (UNSHIELDED)

## ■ SMD Wire Wound Power Inductors

### MECHANICAL DIMENSIONS



CSN043D



Recommended Patterns

unit: mm

### ELECTRICAL SPECIFICATION

Part Number	Marking	Inductance (μH)	Test Freq. (KHz)	DCR (Ω) Max.	Rated Current (A)
CSN043D-1R0M-LRH	1R0	1.0	100	0.0487	2.56
CSN043D-1R4M-LRH	1R4	1.4	100	0.0562	2.52
CSN043D-1R8M-LRH	1R8	1.8	100	0.0637	1.95
CSN043D-2R2M-LRH	2R2	2.2	100	0.0712	1.75
CSN043D-2R7M-LRH	2R7	2.7	100	0.0787	1.58
CSN043D-3R3M-LRH	3R3	3.3	100	0.0862	1.44
CSN043D-3R9M-LRH	3R9	3.9	100	0.0937	1.33
CSN043D-4R7M-LRH	4R7	4.7	100	0.1087	1.15
CSN043D-5R6M-LRH	5R6	5.6	100	0.1257	0.99
CSN043D-6R8M-LRH	6R8	6.8	100	0.1312	0.95
CSN043D-8R2M-LRH	8R2	8.2	100	0.1462	0.84
CSN043D-100M-LRH	100	10	100	0.182	1.04
CSN043D-120M-LRH	120	12	100	0.210	0.97
CSN043D-150M-LRH	150	15	100	0.235	0.85
CSN043D-180M-LRH	180	18	100	0.338	0.74
CSN043D-220M-LRH	220	22	100	0.378	0.68
CSN043D-270M-LRH	270	27	100	0.522	0.62
CSN043D-330K-LRH	330	33	100	0.540	0.56
CSN043D-390K-LRH	390	39	100	0.587	0.52
CSN043D-470K-LRH	470	47	100	0.844	0.44
CSN043D-560K-LRH	560	56	100	0.937	0.42
CSN043D-680K-LRH	680	68	100	1.117	0.37
CSN043D-331K-LRH	331	330	10	3.350	0.10

- Tolerance: M=±20% ; L=±15% ; K=±10%
- Operating Temperature Range: -30°C to +100°C (Including self-generated heat)
- Inductance measured using the HP4284A ; Chroma 3302+1320
- DCR measured using the 16502 milli-ohm meter
- Inductance drop no more than 10% of initial value at rated current ,temperature rises  $\Delta t < 40^\circ\text{C}$
- Storage Temperature Range: -40°C to +85°C

### CHARACTERISTIC CURVE

#### CSN043D Series

