

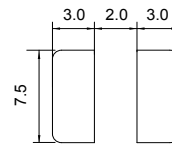
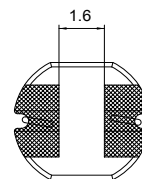
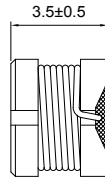
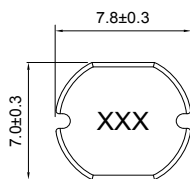
# CSN073D Series (UNSHIELDED)

## ■ SMD Wire Wound Power Inductors

### MECHANICAL DIMENSIONS



CSN073D



Recommend Patterns

unit: mm

### ELECTRICAL SPECIFICATION

Part Number	Marking	Inductance (μH)	Test Freq. (KHz)	DCR (Ω) Max.	Rated Current (A)
CSN073D-100M-LRH	100	10	100	0.0803	1.44
CSN073D-120M-LRH	120	12	100	0.0897	1.39
CSN073D-150M-LRH	150	15	100	0.104	1.24
CSN073D-180M-LRH	180	18	100	0.111	1.12
CSN073D-220M-LRH	220	22	100	0.129	1.07
CSN073D-270M-LRH	270	27	100	0.153	0.94
CSN073D-330M-LRH	330	33	100	0.170	0.85
CSN073D-390M-LRH	390	39	100	0.217	0.74
CSN073D-470M-LRH	470	47	100	0.252	0.68
CSN073D-560K-LRH	560	56	100	0.282	0.64
CSN073D-680K-LRH	680	68	100	0.332	0.59
CSN073D-820K-LRH	820	82	100	0.406	0.54
CSN073D-101K-LRH	101	100	10	0.481	0.51
CSN073D-121K-LRH	121	120	10	0.536	0.49
CSN073D-151K-LRH	151	150	10	0.755	0.40
CSN073D-181K-LRH	181	180	10	1.022	0.36
CSN073D-221K-LRH	221	220	10	1.200	0.31
CSN073D-271K-LRH	271	270	10	1.306	0.29
CSN073D-331K-LRH	331	330	10	1.495	0.28

- Tolerance: M=±20% ; L=±15% ; K=±10%
- Operating Temperature Range: -30°C to +100°C (Including self-generated heat)
- Inductance measured using the HP4284A ; Chroma 3302+1320
- DCR measured using the 16502 milli-ohm meter
- Inductance drop no more than 10% of initial value at rated current ,temperature rises  $\Delta t < 40^{\circ}\text{C}$
- Storage Temperature Range: -40°C to +85°C

### CHARACTERISTIC CURVE

#### CSN073D Series

