

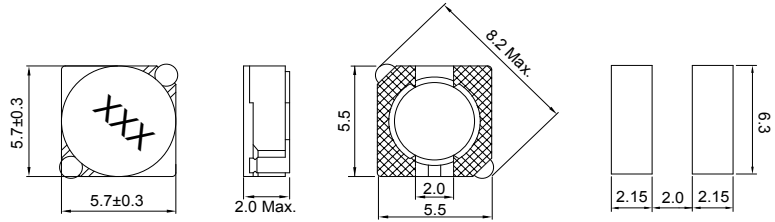
CSS0518P Series (SHIELDED)

■ SMD Wire Wound Power Inductors

MECHANICAL DIMENSIONS



CSS0518P



Recommended Patterns

unit: mm

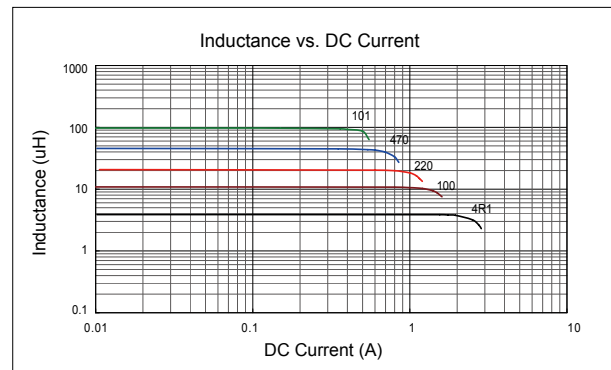
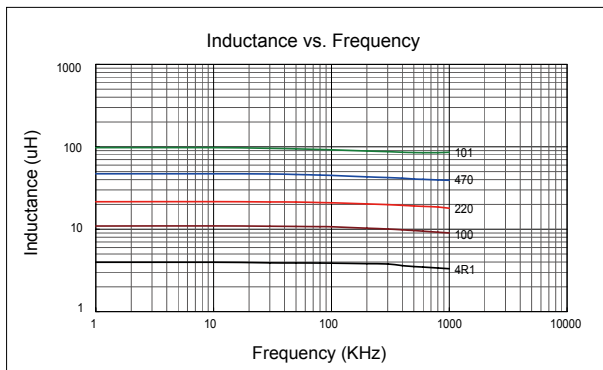
ELECTRICAL SPECIFICATION

Part Number	Marking	Inductance (μH)	Test Freq. (KHz)	DCR (mΩ) Max.	Rated Current (A)
CSS0518P-4R1N-LRH	4R1	4.1	10	57	1.95
CSS0518P-5R4N-LRH	5R4	5.4	10	76	1.60
CSS0518P-6R2N-LRH	6R2	6.2	10	96	1.40
CSS0518P-8R9N-LRH	8R9	8.9	10	116	1.25
CSS0518P-100N-LRH	100	10	10	124	1.20
CSS0518P-120N-LRH	120	12	10	153	1.10
CSS0518P-150N-LRH	150	15	10	196	0.97
CSS0518P-180N-LRH	180	18	10	210	0.85
CSS0518P-220N-LRH	220	22	10	290	0.80
CSS0518P-270N-LRH	270	27	10	330	0.75
CSS0518P-330N-LRH	330	33	10	385	0.65
CSS0518P-390N-LRH	390	39	10	520	0.57
CSS0518P-470N-LRH	470	47	10	595	0.54
CSS0518P-560N-LRH	560	56	10	665	0.50
CSS0518P-680N-LRH	680	68	10	840	0.43
CSS0518P-820N-LRH	820	82	10	978	0.41
CSS0518P-101N-LRH	101	100	10	1200	0.36

- Tolerance: N=±30% ; M=±20% ; L=±15%
- Operating Temperature Range: -30°C to +100°C (Including self-generated heat)
- Inductance measured using the HP4284A ; Chroma3302+1320
- DCR measured using the 16502 milli-ohm meter
- Inductance drop no more than 35% of initial value at Isat, temperature rises Δt<40°C at rated current.
- Storage Temperature Range: -40°C to +85°C

CHARACTERISTIC CURVE

CSS0518P Series



SMD

Leaded