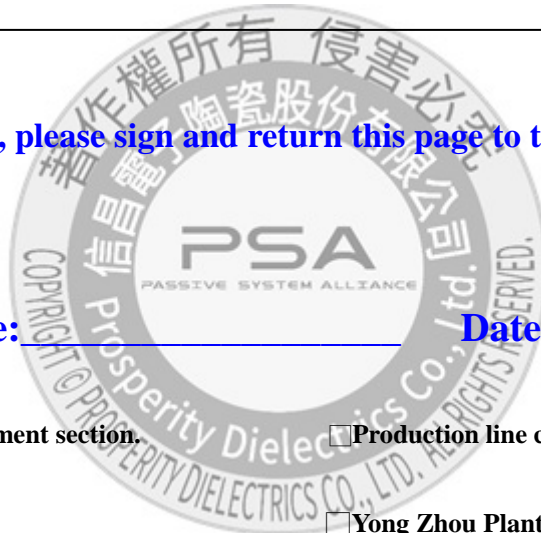


SPECIFICATION FOR APPROVAL

CUSTOMER	_____
CUST. PART NO.	_____
CUST. DOC. REV.	_____
DESCRIPTION	CHIP INDUCTORS(RoHS+H.F.)
SAMPLE LOT NO.	_____
PART NO.	FL160808L-XXXM-LRH
DOC. REV.	ORIG
DATE	_____

Once you approve this part, please sign and return this page to the following marked location.



Customer Signature: _____ **Date:** _____

- This part currently development section. Production line can produce this series of products.

■ Sales Office-Headquarter

No. 566-1, Kao-Shi Rd., Yangmei, Taoyuan 32668,
Taiwan
TEL: +886-3-475-3355
FAX: +886-3-485-4959

Yong Zhou Plant

Tao-Yuan Rd., Fenghuang Park, Lengshuitan
District, Yongzhou, Hunan 425000, P.R.C.
TEL: +86-746-8610-180
FAX: +86-746-8610-181

Sales Office-Dong Guan,China

No.638,Mei Jing West Road Xiniupo Administrative
Zone Dalang Town,Dong Guan City,GuangDong
Province,China.
TEL: +86-769-8555-0979
FAX: +86-769-8555-0972

TESTED BY	CHECKED BY	APPROVED BY

TABLE OF CONTENTS

INDEX	Page
■ Engineering Change Notice - Record	2
■ Part Number Identification	3
■ Mechanical Dimension	3
■ Electrical Specification	3
■ Electrical Curve	4
■ Reliability Performance	5
■ Reflow Chart	6
■ Packing	7
■ Test Report	



SPECIFICATION FOR APPROVAL

CUSTOMER	CUSTOMER P/N	REV. -	SPL. LOT NO.	
PART NAME CHIP INDUCTORS (RoHS+H.F.)	PART NO. FL160808L-XXXM-LRH	REV. ORIG	DATE OF ISSUE	Q'TY 0 PCS

ENGINEERING CHANGE NOTICE - RECORD

REVISION NO.	REVISION DESCRIPTION	AUTHOR	DATE	REMARK
ORIG		<i>Bruce Hsu</i>		

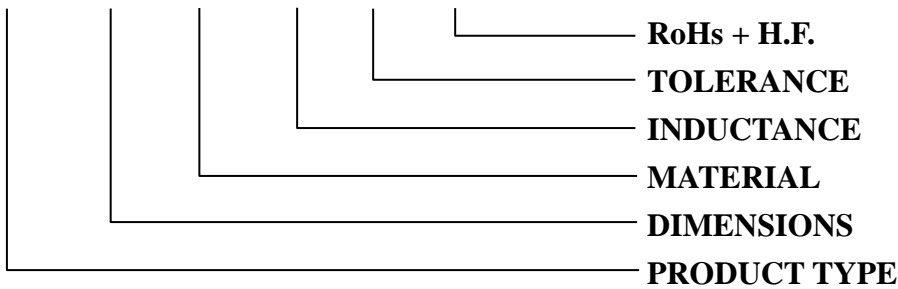


SPECIFICATION FOR APPROVAL

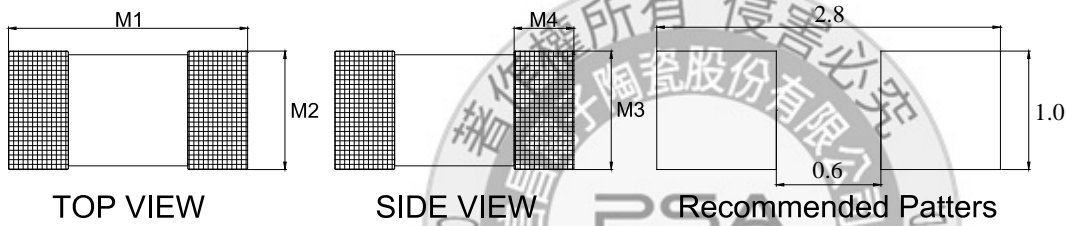
※This is a RoHS and REACH compliant product whose related documents are available on request.
 ※Graphic is only for dimensionally application.

1. PART NUMBER IDENTIFICATION

FL 160808 L - □□□ □ - LRH



2. MECHANICAL DIMENSION



UNIT: mm

	DIM.	TOL.
M1	1.60	±0.15
M2	0.80	±0.15
M3	0.80	±0.15
M4	0.30	±0.20

3. ELECTRICAL SPECIFICATION

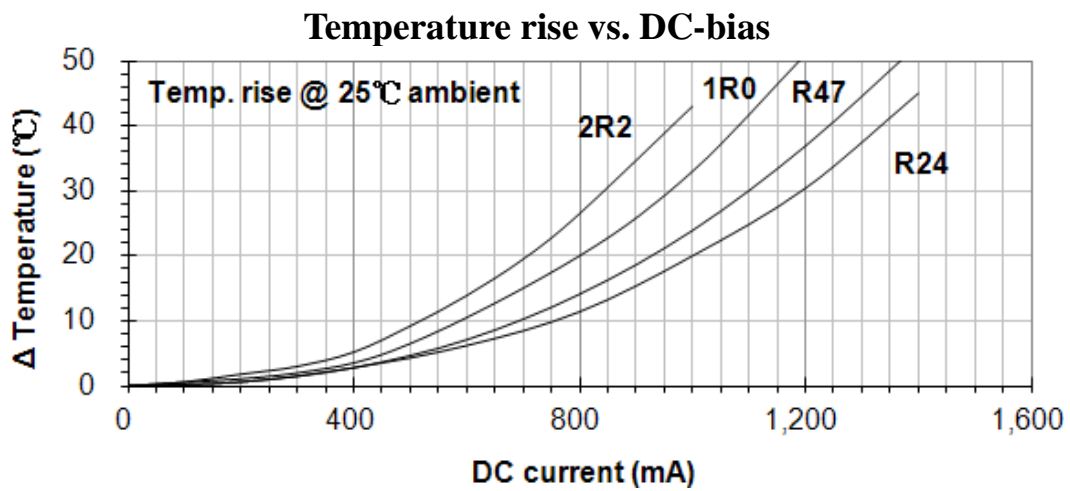
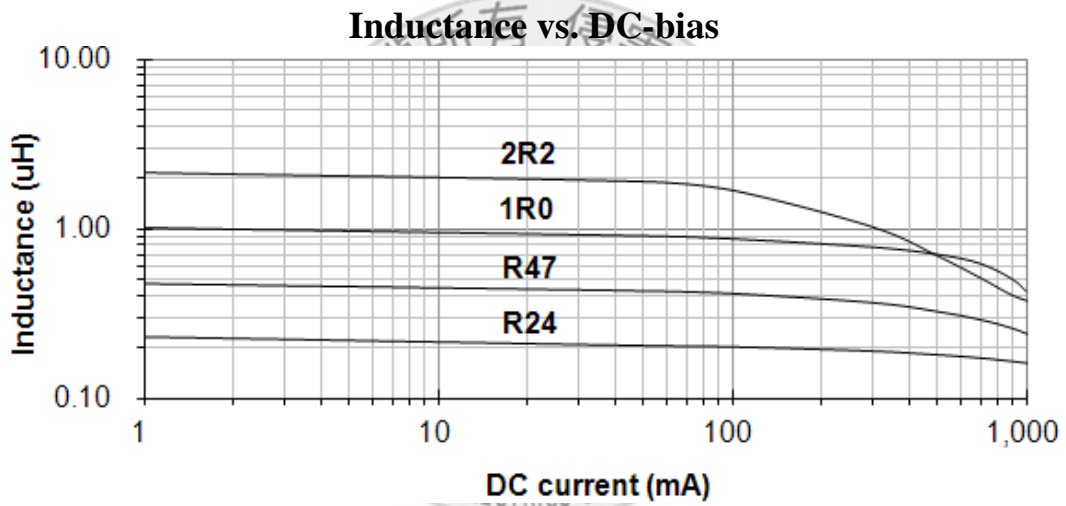
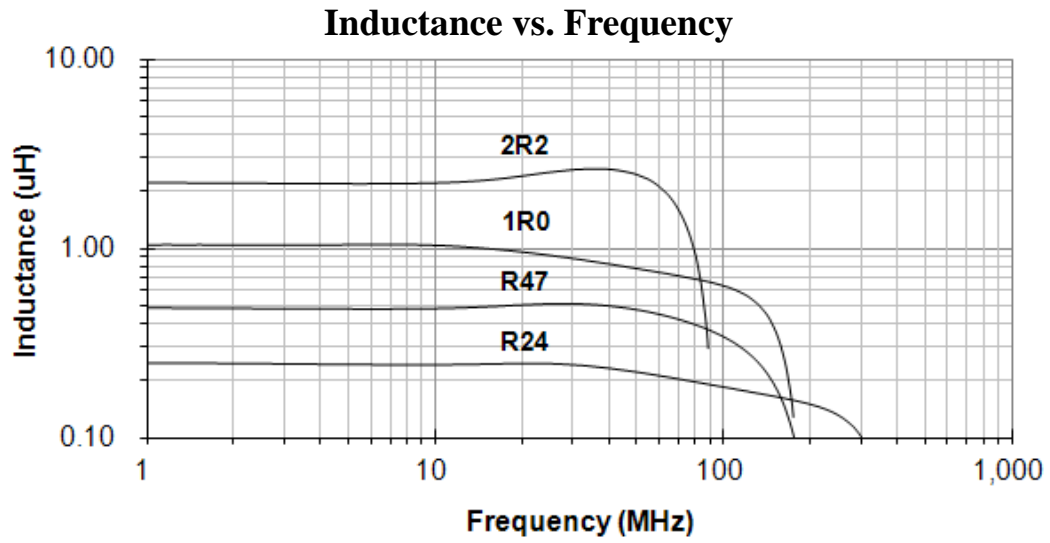
Part number	Inductance (μ H) ±20%	DC Resistance (Ω) ±25%	Rated Current (mA)	SRF (MHz)
FL160808L-R24M-LRH	0.24	0.100	1200	90
FL160808L-R47M-LRH	0.47	0.100	1200	70
FL160808L-1R0M-LRH	1.00	0.200	950	60
FL160808L-2R2M-LRH	2.20	0.300	750	50

TEST INSTRUMENT: HP4291B-RF、HP4338A/B

TEST FREQUENCY: 1MHz / OSC LEVEL: 100mV

SPECIFICATION FOR APPROVAL

4. ELECTRICAL CURVE



SPECIFICATION FOR APPROVAL

5. RELIABILITY PERFORMANCE

Test Item	Test Condition	Criteria
Resistance to Solder Heat	1. Solder temperature : $260\pm 5^{\circ}\text{C}$ 2. Flux : Rosin 3. DIP time : 10 ± 1 sec	1. More than 95% of terminal electrode should be covered with new solder 2. No mechanical damage 3. Inductance value should be within $\pm 20\%$ of the initial value
Solderability	1. Solder temperature : $235\pm 5^{\circ}\text{C}$ 2. Flux : Rosin 3. DIP time : 5 ± 1 sec	1. More than 95 % of terminal electrode should be covered with new solder 2. No mechanical damage
Adhesive Test	1. Reflow temperature : 245°C It shall be soldered on the substrate applying direction parallel to the substrate 2. Apply force(F) : 5 N 3. Test time : 10 sec	1. No mechanical damage 2. Soldering the products on PCB after the pulling test force > 5 N
Temperature Cycle	1. Temperature: $-40 \sim 85^{\circ}\text{C}$ for 30 minutes each 2. Cycle: 100 cycles 3. Measurement: at ambient temperature 24 hours after test completion	1. No mechanical damage 2. Inductance should be within $\pm 20\%$ of the initial value (Inductance: $\leq 0.47\mu\text{H}$) Inductance should be within $\pm 30\%$ of the initial value (Inductance: $> 0.47\mu\text{H}$)
High Temperature Resistance	1. Temperature: $85\pm 5^{\circ}\text{C}$ 2. Testing time: 1000 hrs 3. Measurement: at ambient temperature 24 hours after test completion	1. No mechanical damage 2. Inductance should be within $\pm 20\%$ of the initial value (Inductance: $\leq 0.47\mu\text{H}$) Inductance should be within $\pm 30\%$ of the initial value (Inductance: $> 0.47\mu\text{H}$)
Humidity	1. Temperature: $40^{\circ}\text{C}\pm 2^{\circ}\text{C}$ 2. Humidity: 90-95% RH 3. Testing time: 1000 hrs 4. Measurement: at ambient temperature 24 hours after test completion	1. No mechanical damage 2. Inductance should be within $\pm 20\%$ of the initial value
Rated Current	At ambient temperature & humidity Testing time: 5 minutes (under full rated current)	MIP product surface temp : below room temperature plus 40°C

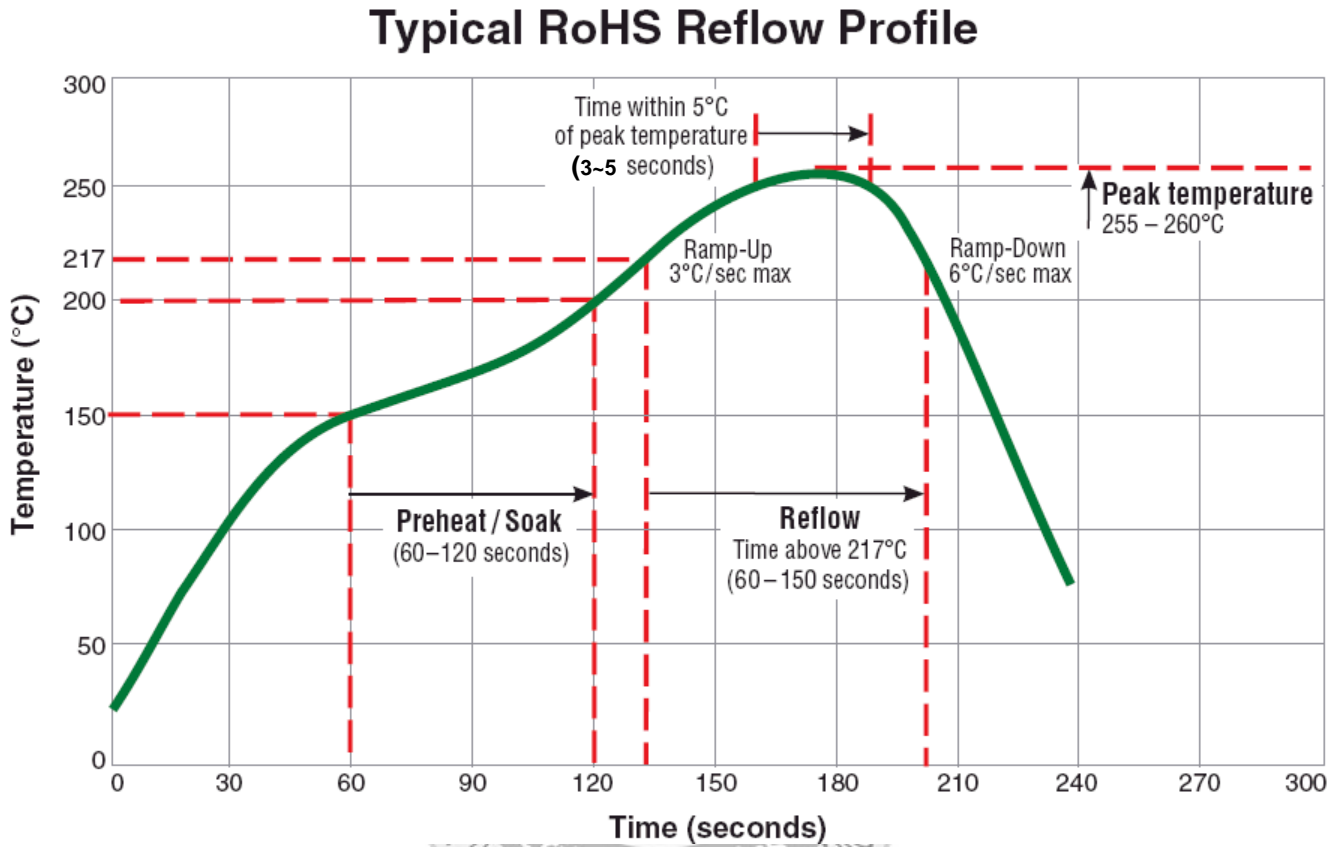
OPERATING TEMPERATURE RANGE : - 40°C ~ $+85^{\circ}\text{C}$

STORAGE CONDITION : LESS THAN 40°C & 70% RH

MSL: LEVER 1

SPECIFICATION FOR APPROVAL

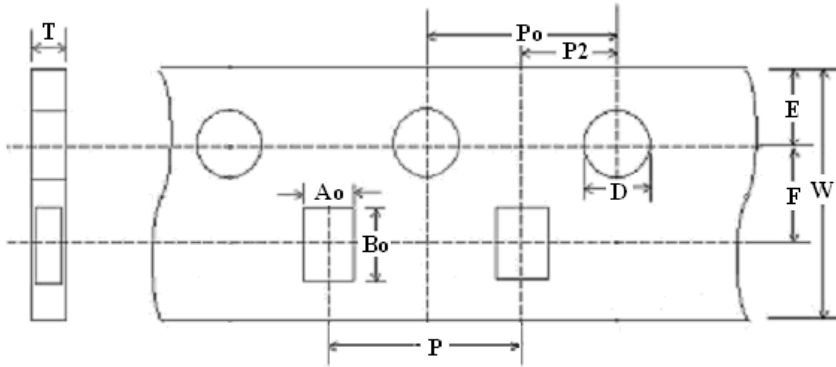
6. TYPICAL RoHS REFLOW PROFILE



SPECIFICATION FOR APPROVAL

7. PACKING

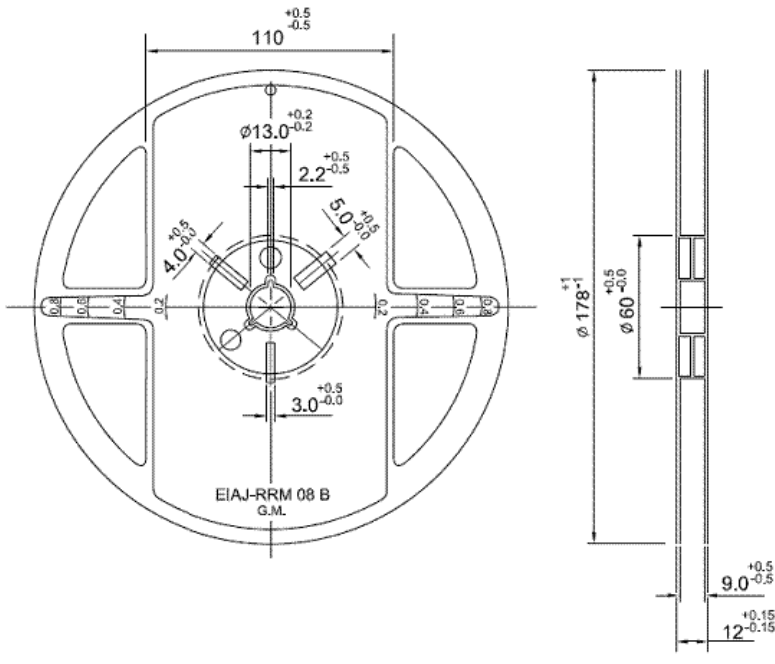
7.1 PAPER CARRIER



UNIT : mm

W	P	E	F	D	Po	P2	Ao	Bo	T
8.00±0.10	4.00±0.10	1.75±0.10	3.50±0.10	1.56±0.10	4.00±0.10	2.00±0.10	0.97±0.05	1.80±0.05	0.75±0.05

7.2 REEL DIMENSIONS



7.3 Packaging Quantity

Reel	Inner Box
4,000 Pcs	5 Reels