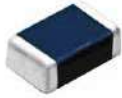


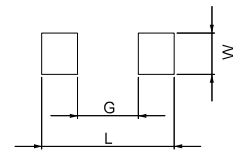
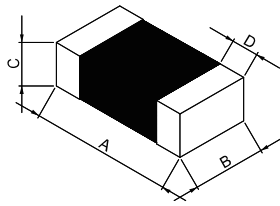
# FL Series (STANDAR)

## ■ SMD Multi-Layer Ceramic Chip Inductors

### MECHANICAL DIMENSIONS



FL

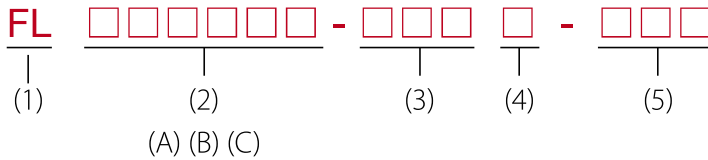


Recommended Patterns

unit: mm

TYPE	A	B	C	D	L	W	G
160808	1.6±0.2 (0.063±0.008)	0.8±0.2 (0.031±0.008)	0.8±0.2 (0.031±0.008)	0.3±0.2 (0.012±0.008)	2.08 (0.110)	1.00 (0.039)	0.60 (0.024)
201209	2.0±0.2 (0.079±0.008)	1.2±0.2 (0.047±0.008)	0.9±0.2 (0.035±0.008)	0.5±0.3 (0.020±0.012)	3.20 (0.126)	1.50 (0.059)	1.60 (0.024)
201212	2.0±0.2 (0.079±0.008)	1.2±0.2 (0.047±0.008)	1.2±0.2 (0.047±0.008)	0.5±0.3 (0.020±0.012)	3.20 (0.126)	1.50 (0.059)	0.6 (0.024)

### PART NUMBER KEY



- (1) Product Symbol: Multilayer Chip Inductors
- (2) Dimensions: Length (A) x Width (B) x Thickness (C)
- (3) Inductance
- (4) Tolerance
- (5) Internal code

### FEATURES

- Tolerance : J=±5% ; K=±10% ; M=±20%
- The product's material : Ferrite.
- No cross coupling between inductors due to magnetic shield. Ideal for high-density installation.
- The completely monolithic structure gives high reliability and allows high SRF.
- Operating temperature range : -40°C to +125°C .
- Monolithic structure for highly reliable surface mount applications.
- Excellent solderability and high heat resistance for either flow or reflow soldering.
- Superior Q characteristics guaranteed over the wide frequency allow high frequency application.

### ELECTRICAL SPECIFICATION: 1608 TYPE

Part Number	Inductance at 100MHz (μH)	Q (min.)	Test Frequency (MHz)	SRF (MHz) Min.	DC Resistance (Ω) Max.	Rated Current (mA) Max.
FL160808-47NM-LRH	0.047±20%	10	50	260	0.30	50
FL160808-68NM-LRH	0.068±20%	10	50	250	0.30	50
FL160808-R10K-LRH	0.10±10%	15	25	240	0.50	50
FL160808-R12K-LRH	0.12±10%	15	25	205	0.50	50
FL160808-R15K-LRH	0.15±10%	15	25	180	0.60	50
FL160808-R18K-LRH	0.18±10%	15	25	165	0.60	50
FL160808-R22K-LRH	0.22±10%	15	25	150	0.80	50
FL160808-R27K-LRH	0.27±10%	15	25	136	0.80	50
FL160808-R33K-LRH	0.33±10%	15	25	125	0.85	35
FL160808-R39K-LRH	0.39±10%	15	25	110	1.00	35
FL160808-R47K-LRH	0.47±10%	15	25	105	1.35	35
FL160808-R56K-LRH	0.56±10%	15	25	95	1.55	35
FL160808-R68K-LRH	0.68±10%	15	25	90	1.70	35
FL160808-R82K-LRH	0.82±10%	15	25	85	2.10	35
FL160808-1R0K-LRH	1.0±10%	35	10	75	0.60	25
FL160808-1R2K-LRH	1.2±10%	35	10	65	0.80	25
FL160808-1R5K-LRH	1.5±10%	35	10	60	0.80	25
FL160808-1R8K-LRH	1.8±10%	35	10	55	0.95	25
FL160808-2R2K-LRH	2.2±10%	35	10	50	1.15	15
FL160808-2R7K-LRH	2.7±10%	35	10	45	1.35	15

# FL Series (STANDAR)

## ■ SMD Multi-Layer Ceramic Chip Inductors

### ELECTRICAL SPECIFICATION: 1608 TYPE

Part Number	Inductance at 100MHz (μH)	Q (min.)	Test Frequency (MHz)	SRF (MHz) Min.	DC Resistance (Ω) Max.	Rated Current (mA) Max.
FL160808-3R3K-LRH	3.3±10%	35	10	40	1.55	15
FL160808-3R9K-LRH	3.9±10%	35	10	35	1.70	15
FL160808-4R7K-LRH	4.7±10%	35	10	33	2.10	15
FL160808-5R6K-LRH	5.6±10%	35	4	22	1.55	5
FL160808-6R8K-LRH	6.8±10%	35	4	20	1.70	5
FL160808-8R2K-LRH	8.2±10%	35	4	18	2.10	5
FL160808-100K-LRH	10±10%	30	2	17	1.85	3
FL160808-120K-LRH	12±10%	30	2	15	2.10	3

### ELECTRICAL SPECIFICATION: 2012 TYPE

Part Number	Inductance at 100MHz (μH)	Q (min.)	Test Frequency (MHz)	SRF (MHz) Min.	DC Resistance (Ω) Max.	Rated Current (mA) Max.
FL201209-47NM-LRH	0.047±20%	15	50	320	0.20	300
FL201209-68NM-LRH	0.068±20%	15	50	280	0.20	300
FL201209-R10K-LRH	0.10±10%	20	25	235	0.30	250
FL201209-R12K-LRH	0.12±10%	20	25	220	0.30	250
FL201209-R15K-LRH	0.15±10%	20	25	200	0.40	250
FL201209-R18K-LRH	0.18±10%	20	25	185	0.40	250
FL201209-R22K-LRH	0.22±10%	20	25	170	0.50	250
FL201209-R27K-LRH	0.27±10%	20	25	150	0.50	250
FL201209-R33K-LRH	0.33±10%	20	25	145	0.55	250
FL201209-R39K-LRH	0.39±10%	25	25	135	0.65	200
FL201209-R47K-LRH	0.47±10%	25	25	125	0.65	200
FL201209-R56K-LRH	0.56±10%	25	25	115	0.75	150
FL201209-R68K-LRH	0.68±10%	25	25	105	0.80	150
FL201209-R82K-LRH	0.82±10%	25	25	100	1.00	150
FL201209-1R0K-LRH	1.0±10%	45	10	75	0.40	50
FL201209-1R2K-LRH	1.2±10%	45	10	65	0.50	50
FL201209-1R5K-LRH	1.5±10%	45	10	60	0.50	50
FL201209-1R8K-LRH	1.8±10%	45	10	55	0.60	50
FL201209-2R2K-LRH	2.2±10%	45	10	50	0.65	30
FL201212-2R7K-LRH	2.7±10%	45	10	45	0.75	30
FL201212-3R3K-LRH	3.3±10%	45	10	41	0.80	30
FL201212-3R9K-LRH	3.9±10%	45	10	38	0.90	30
FL201212-4R7K-LRH	4.7±10%	45	10	35	1.00	30
FL201212-5R6K-LRH	5.6±10%	50	4	32	0.90	15
FL201212-6R8K-LRH	6.8±10%	50	4	29	1.00	15
FL201212-8R2K-LRH	8.2±10%	50	4	26	1.10	15
FL201212-100K-LRH	10±10%	50	2	24	1.15	15
FL201212-220K-LRH	22±10%	35	1	16	1.10	5

SMD

Leaded