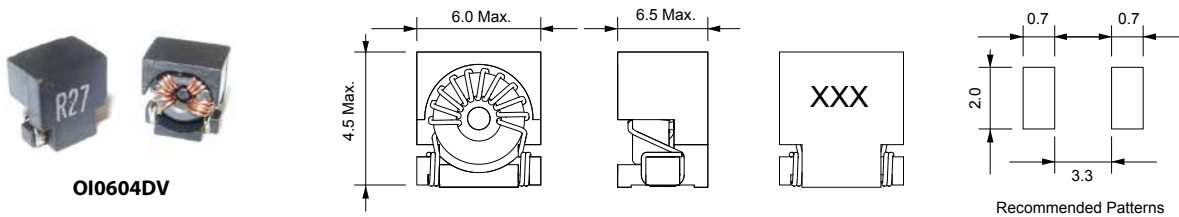


OI0604DV / OI0707BI Series

RF Signal Choke

MECHANICAL DIMENSIONS



OI0604DV

Recommended Patterns

unit: mm

ELECTRICAL SPECIFICATION

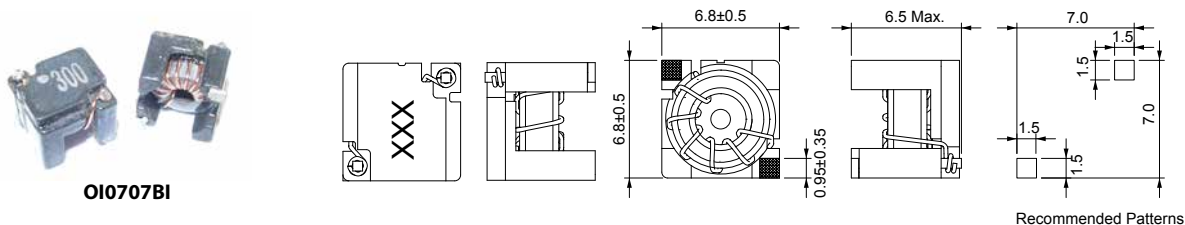
Part Number	Marking	Inductance (nH)	Q Min.	Test Freq.
OI0604DV-R15□H	R15	150	80	40MHz
OI0604DV-R18□H	R18	180	80	40MHz
OI0604DV-R27□H	R27	270	80	40MHz
OI0604DV-R33□H	R33	330	80	40MHz

- Tolerance: H=±3% ; J=±5% ; K=±10%
- Operating Temp.: -25°C to +85°C
- Inductance measured using the HP4291B or HP4287A
- Q measured using the HP4291B or HP4287A
- Test Fixture: HP16193A

APPLICATIONS

- LC filter , for CATV diplex filter.

MECHANICAL DIMENSIONS



OI0707BI

Recommended Patterns

unit: mm

ELECTRICAL SPECIFICATION

Part Number	Marking	Inductance (nH)	Inductance Tolerance	Q Min.	Test Freq.
OI0707BI-R20□H	200	200	G, J, K	100	40 MHz
OI0707BI-R22□H	220	220	G, J, K	100	40 MHz
OI0707BI-R24□H	240	240	G, J, K	100	40 MHz
OI0707BI-R30□H	300	300	G, J, K	100	40 MHz
OI0707BI-R33□H	330	330	G, J, K	100	40 MHz
OI0707BI-R43□H	430	430	G, J, K	100	40 MHz

- Tolerance: G=±2% ; J=±5% ; K=±10%
- Operating Temp.: -40°C to +125°C
- Inductance measured using the HP4291B or HP4287A
- Q measured using the HP4291B or HP4287A
- Test Fixture: HP16092A or HP16193A

APPLICATIONS

- LC filter , for CATV diplex filter.

SMD

Leaded