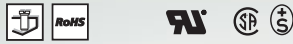
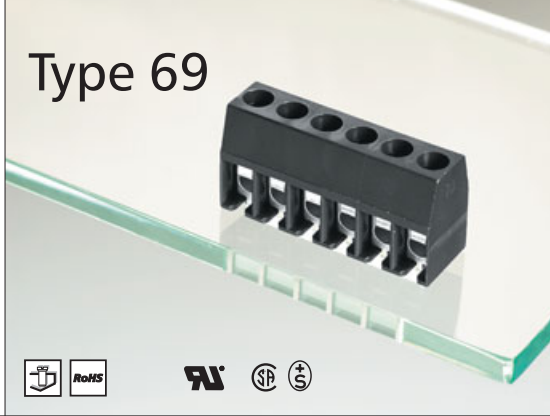
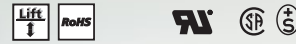




Type 69



Type 11



Note for wire range

Additional wire sizes and/or combinations of same size wires as follows:

Type 69

2 No. 22 - 18 AWG (field-wiring);
2 No. 26 - 18 AWG or
1 No. 26 - 14 AWG (factory-wiring)

Type 11

#(1) Wire range extended to No. 30 AWG for factory-wiring

Description Type 69

Screw type terminal block, solderable, centerline 5 mm / 0.197 inches, horizontal wire entry, wire protector

Technical Data Type 69

UL V / A / AWG 300 / 20 / 22 - 12 #### (see note)

RoHS V / A / AWG 300 / 20 / 22 - 12 #### (see note)

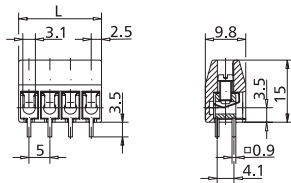
Screw torque max. 6 lbs.-in

CS 0.13 - 1.5 mm² 250 V / 4 kV / 3 / 15 A

Insulation co-ordination according to IEC 60664-1
Clearance and creepage distance ≥ 3.9 mm
Screw torque max. 0.5 Nm

Wire diameter	single wire 0.4 - 2.2 mm
Wire strip length	8 mm / 0.315 in.
Solder pin	□ 0.9 mm / □ 0.035 in. recommended pc board hole dia. 1.4 mm / 0.055 in.
Solder pin length	3.5 mm / 0.138 in.
Pole size	2 to 24
Colour	black

Dimensions in mm 1 mm = 0.0394 in.



$L = (\text{pole size} - 1) \times \text{centerline} + 5 \text{ mm} / 0.197 \text{ in.}$

Type 69 centerline 5 mm / 0.197 in.

P/N 310691 __ 02 03 04 05 06 07
08 09 10 11 12 (pole size)

- complete the part number by adding the pole size to the blank __
- other pole sizes consult factory

Type 69 centerline 10 mm / 0.394 in.

P/N 310692 __ 02 03 04 (pole size)

- complete the part number by adding the pole size to the blank __
- other pole sizes consult factory

Description Type 11

Screw type terminal block, solderable, centerline 5 mm / 0.197 inches, horizontal wire entry, lift system

Technical Data Type 11

UL V / A / AWG 300 / 15 / 28 - 12 #(1) (see note)

RoHS V / A / AWG 300 / 15 / 22 - 14 #(1) (see note)

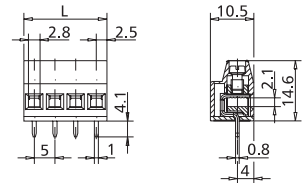
Screw torque max. 8 lbs.-in

CS 0.08 - 1.5 mm² 125 V / 4 kV / 3 / 13 A

Insulation co-ordination according to IEC 60664-1
Clearance and creepage distance ≥ 3.9 mm
Screw torque max. 0.5 Nm

Wire diameter	single wire 0.3 - 2 mm
Wire strip length	7 mm / 0.276 in.
Solder pin	0.8 x 1 mm 0.031 x 0.039 in. recommended pc board hole dia. 1.4 mm / 0.055 in.
Solder pin length	4.1 mm / 0.161 in.
Pole size	2 to 16
Colour	black

Dimensions in mm 1 mm = 0.0394 in.



$L = (\text{pole size} - 1) \times \text{centerline} + 5 \text{ mm} / 0.197 \text{ in.}$

Type 11 centerline 5 mm / 0.197 in.

P/N 310111 __ 02 03 04 05 06 07
08 09 10 11 12 (pole size)

- complete the part number by adding the pole size to the blank __
- other pole sizes consult factory

Type 11 centerline 10 mm / 0.394 in.

P/N 310112 __ 02 03 (pole size)

- complete the part number by adding the pole size to the blank __
- other pole sizes consult factory