

**Terminal blocks**

to Type 229

- ASP046** [page 42](#)
- Type 213** [page 95](#)
- Type 214** [page 95](#)
- Type 249** [page 93](#)
- Type 250** [page 93](#)

**Accessories**

for Type 229

**Coding set**  
**700024** [page 160](#)  
 (coding without pole loss)

**Description Type 229**

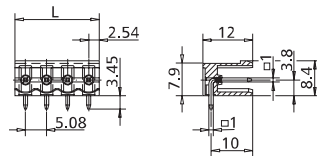
Header, centerline 5.08 mm / 0.200 inches, horizontal mounting, square contact pins 1 mm / 0.039 inches, open ends, codable

**Technical Data Type 229**

	V / A	300 / 15
	V / A	300 / 15
	250 V / 4 kV / 3 / 10 A	
	Insulation co-ordination according to IEC 664-1 Clearance and creepage distance ≥ 4.1 mm	

Square contact pin	1 mm / 0.039 in.
Square solder pin	1 mm / 0.039 in. recommended pc board hole dia. 1.5 mm / 0.059 in.
Solder pin length	3.45 mm / 0.136 in.
Pole size	2 to 24
Colour (standard)	black
Colour (optional)	green

Dimensions in mm 1 mm = 0.0394 in.



$L = (\text{pole size} - 1) \times \text{centerline} + 5.08 \text{ mm} / 0.200 \text{ in.}$

**Colour Options**

for Type 229

<b>Suffix</b>	<b>Colour</b>
-2	black (standard)
-6	green

Please order header and terminal block in the same colour.

**Type 229** centerline 5.08 mm / 0.200 in.

P/N 312291    **02 03 04 05 06 07**  
**08 09 10 11 12** (pole size)

- complete the part number by adding the pole size to the blank
- other pole sizes consult factory

**Type 229** centerline 10.16 mm / 0.400 in.

P/N 312292    **02 03 04 05 06 07**  
**08 09 10 11 12** (pole size)

- complete the part number by adding the pole size to the blank
- other pole sizes consult factory