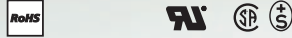
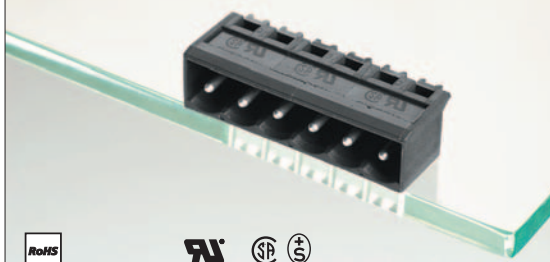
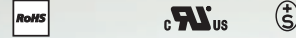
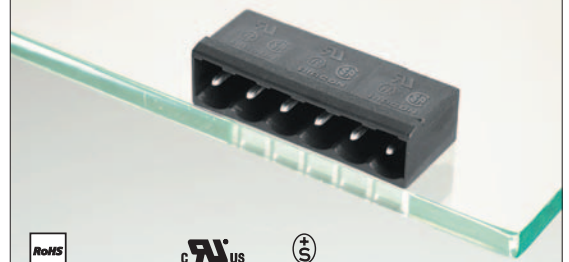




Type 30



Type 330



Terminal blocks

to Type 30

- Type 09** page 87
- Type 13** page 90
- Type 49** page 87

to Type 330

- ASP045** page 41
- Type 313** page 90
- Type 314** page 91
- Type 349** page 88
- Type 350** page 88

Accessories

for Type 330

- Coding set**
 - 700024** page 160
- (coding without pole loss)

Description Type 30

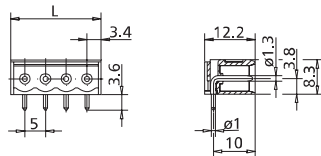
Header, centerline 5 mm / 0.197 inches, horizontal mounting, round contact pins 1.3 mm / 0.051 inches, closed ends

Technical Data Type 30

	V / A	300 / 15
	V / A	300 / 15
	250 V / 4 kV / 3 / 10 A	
	Insulation co-ordination according to IEC 664-1 Clearance and creepage distance ≥ 3.7 mm	

Round contact pin	1.3 mm / 0.051 in.
Round solder pin	1 mm / 0.039 in. recommended pc board hole dia. 1.3 mm / 0.051 in.
Solder pin length	3.6 mm / 0.142 in.
Pole size	2 to 22
Colour	black

Dimensions in mm 1 mm = 0.0394 in.



$L = (\text{pole size} - 1) \times \text{centerline} + 6.8 \text{ mm} / 0.268 \text{ in.}$

Description Type 330

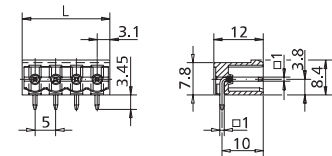
Header, centerline 5 mm / 0.197 inches, horizontal square contact pins 1 mm / 0.039 inches, closed ends, codable

Technical Data Type 330

	V / A	300 / 15
	320 V / 4 kV / 3 / 10 A	
	Insulation co-ordination according to IEC 664-1 Clearance and creepage distance ≥ 4 mm	

Square contact pin	1 mm / 0.039 in.
Square solder pin	1 mm / 0.039 in. recommended pc board hole dia. 1.5 mm / 0.059 in.
Solder pin length	3.45 mm / 0.136 in.
Pole size	2 to 24
Colour (standard)	black
Colour (optional)	green

Dimensions in mm 1 mm = 0.0394 in.



$L = (\text{pole size} - 1) \times \text{centerline} + 6.2 \text{ mm} / 0.244 \text{ in.}$

Colour Options

for Type 330

Suffix	Colour
-2	black (standard)
-6	green

Please order header and terminal block in the same colour.

Type 30 centerline 5 mm / 0.197 in.

P/N 310301 __ 02 03 04 05 06 07
08 09 10 11 12 (pole size)
- complete the part number by adding the pole size to the blank __
- other pole sizes consult factory

Type 30 centerline 10 mm / 0.394 in.

P/N 310302 __ 02 03 (pole size)
- complete the part number by adding the pole size to the blank __
- other pole sizes consult factory

Type 330 centerline 5 mm / 0.197 in.

P/N 313301 __ 02 03 04 05 06 07
08 09 10 11 12 (pole size)
- complete the part number by adding the pole size to the blank __
- other pole sizes consult factory

Type 330 centerline 10 mm / 0.394 in.

P/N 313302 __ 02 03 04 05 06 07
08 09 10 11 12 (pole size)
- complete the part number by adding the pole size to the blank __
- other pole sizes consult factory