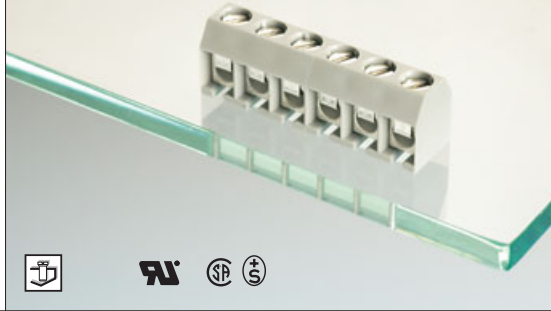
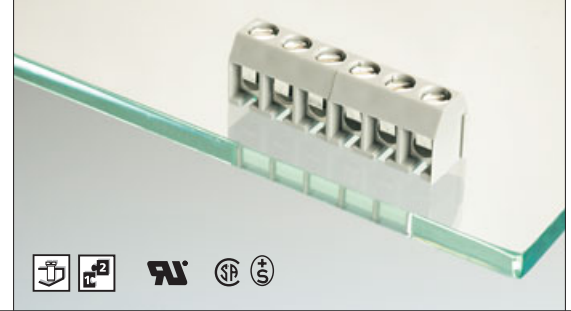




Type 01



Type 55



Note for wire range

Additional wire sizes and/or combinations of same size wires as follows:

Type 01 and Type 55

#(1) Wire range extended to No. 30 AWG for factory-wiring

++ Two same size wires No. 22 - 18 AWG Cu Sol/Str for field-wiring; 30 - 18 AWG Cu Sol/Str factory-wiring

Description Type 01

Screw type terminal block, solderable, centerline 5 mm / 0.197 inches, horizontal wire entry, wire protector

Technical Data Type 01

UL V / A / AWG 300 / 15 / 22 - 14 #(1), ++ (see note)

SP V / A / AWG 300 / 15 / 22 - 14 #(1), ++ (see note)

Screw torque max. 7 lbs.-in

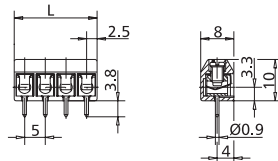
CE 0.08 - 1.5 mm² 125 V / 2.5 kV / 3 / 13 A

Insulation co-ordination according to IEC 60664-1 Clearance and creepage distance ≥ 2.6 mm

Screw torque max. 0.5 Nm

Wire diameter single wire 0.3 - 1.6 mm
 Wire strip length 6 mm / 0.236 in.
 Solder pin 0.9 mm / 0.035 in. dia. recommended pc board hole dia. 1.2 mm / 0.047 in.
 Solder pin length 3.8 mm / 0.150 in.
 Pole size 2 to 22
 Color grey

Dimensions in mm 1 mm = 0.0394 in.



L = (pole size - 1) x centerline + 5 mm / 0.197 in.

Description Type 55

Screw type terminal block, solderable, centerline 5 mm / 0.197 inches, horizontal wire entry, wire protector, modular

Technical Data Type 55

UL V / A / AWG 300 / 15 / 22 - 14 #(1), ++ (see note)

SP V / A / AWG 300 / 15 / 22 - 14 #(1), ++ (see note)

Screw torque max. 7 lbs.-in

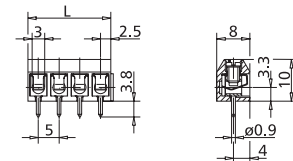
CE 0.08 - 1.5 mm² 125 V / 2.5 kV / 3 / 13 A

Insulation co-ordination according to IEC 60664-1 Clearance and creepage distance ≥ 2.6 mm

Screw torque max. 0.5 Nm

Wire diameter single wire 0.3 - 1.6 mm
 Wire strip length 6 mm / 0.236 in.
 Solder pin 0.9 mm / 0.035 in. dia. recommended pc board hole dia. 1.2 mm / 0.047 in.
 Solder pin length 3.8 mm / 0.150 in.
 Pole size 2 to 4
 Color grey

Dimensions in mm 1 mm = 0.0394 in.



L = (pole size - 1) x centerline + 5 mm / 0.197 in.

Type 01 centerline 5 mm / 0.197 in.

P/N 310011 02 03 04 05 06 07
08 09 10 11 12 (pole size)

- complete the part number by adding the pole size to the blank __
 - other pole sizes consult factory

Type 01 centerline 10 mm / 0.394 in.

P/N 310012 02 03 04 (pole size)

- complete the part number by adding the pole size to the blank __
 - other pole sizes consult factory

Type 55 centerline 5 mm / 0.197 in.

P/N 310551 02 03 04 (pole size)

- complete the part number by adding the pole size to the blank __
 - other pole sizes consult factory