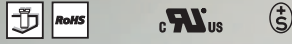




## Type 07



## Type 77



### Headers

to **Type 07** and **Type 77**

**Type 17/27** page 112

**Type 41** page 114

**Type 39** page 120

### Accessories

for **Type 07**

**Coding pin**

710121 short

720122 long page 156

**Coding set**

716846 page 157

**Latching flange**

710084 right

710085 left page 153

for **Type 77**

**Coding pin**

710121 short

710122 long page 156

**Coding set**

716846 page 157

**Mounting flange**

750150 right

750151 left page 154

### Note for wire range

Additional wire sizes and/or combinations of same size wires as follows:

#### Type 07 and Type 77

#(1) Wire range extended to No. 30 AWG for factory-wiring.

+ Two same size wires No. 22 - 16 AWG Cu Sol/Str for field-wiring; No. 30 - 16 AWG Cu Sol/Str factory-wiring.

### Description Type 07

Screw type terminal block, pluggable, centerline 5 mm / 0.197 inches, wire entry perpendicular to plug direction, wire protector, female contact

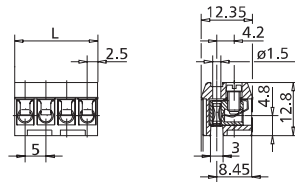
### Technical Data Type 07

**US** V / A / AWG 300 / 15 / 22 - 12 #(1), + (see note)  
Screw torque max. 7 lbs.-in

0.08 - 2.5 mm<sup>2</sup> 125 V / 2.5 kV / 3 / 10 A  
Insulation co-ordination according to IEC 60664-1  
Clearance and creepage distance ≥ 2.3 mm  
Screw torque max. 0.5 Nm

Wire diameter	single wire 0.3 - 1.8 mm
Wire strip length	6 mm / 0.236 in.
Contact resistance from the termination point via header to the pc board	≤ 5 mΩ per pole
Pole size	2 to 24
Colour	black

Dimensions in mm 1 mm = 0.0394 in.



L = (pole size - 1) x centerline + 5 mm / 0.197 in.

### Type 07 centerline 5 mm / 0.197 in.

P/N 310071 \_\_ 02 03 04 05 06 07  
08 09 10 11 12 (pole size)  
- complete the part number by adding the pole size to the blank \_\_  
- other pole sizes consult factory

### Type 07 centerline 10 mm / 0.394 in.

P/N 310072 \_\_ 02 03 04 (pole size)  
- complete the part number by adding the pole size to the blank \_\_  
- other pole sizes consult factory

### Description Type 77

Screw type terminal block, pluggable, centerline 5 mm / 0.197 inches, wire entry perpendicular to plug direction, wire protector, modular, female contact

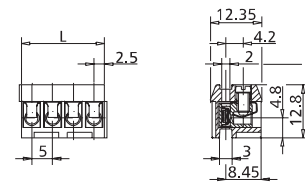
### Technical Data Type 77

**US** V / A / AWG 300 / 15 / 22 - 14 #(1), + (see note)  
Screw torque max. 7 lbs.-in

0.08 - 2.5 mm<sup>2</sup> 125 V / 2.5 kV / 3 / 10 A  
Insulation co-ordination according to IEC 60664-1  
Clearance and creepage distance ≥ 2.3 mm  
Screw torque max. 0.5 Nm

Wire diameter	single wire 0.3 - 1.8 mm
Wire strip length	6 mm / 0.236 in.
Contact resistance from the termination point via header to the pc board	≤ 5 mΩ per pole
Pole size	2, 3
Colour	black

Dimensions in mm 1 mm = 0.0394 in.



L = (pole size - 1) x centerline + 5 mm / 0.197 in.

### Type 77 centerline 5 mm / 0.197 in.

P/N 310771 \_\_ 02 03 (pole size)  
- complete the part number by adding the pole size to the blank \_\_  
- other pole sizes consult factory