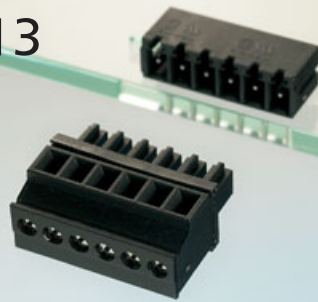
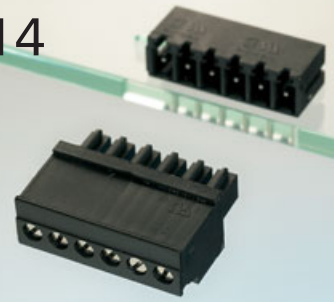




Type 113



Type 114



Headers

to Type 113 and Type 114

Type 383 page 110

Type 382 page 111

Description Type 113

Screw type terminal block, pluggable, centerline 3.81 mm / 0.150 inches, wire entry on the straight side, perpendicular to plug direction, lift system, contact system with integrated wire protection

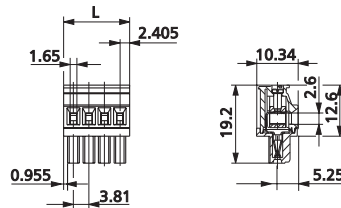
Technical Data Type 113

V / A / AWG 300 / 11 / 28 - 16
Screw torque max. 3 lbs.-in

0.08 - 1.5 mm² 130 V / 2.5 kV / 3 / 9 A
Insulation co-ordination according to IEC 60664-1
Clearance and creepage distance ≥ 2.9 mm
Screw torque max. 0.25 Nm

Wire diameter	single wire 0.3 - 1.4 mm
Wire strip length	7 mm / 0.278 in.
Contact resistance from the termination point via header to the pc board	≤ 5 mΩ per pole
Pole size	2 to 21
Colour	black

Dimensions in mm 1 mm = 0.0394 in.



L = (pole size - 1) x centerline + 4.81 mm / 0.189 in.

Description Type 114

Screw type terminal block, pluggable, centerline 3.81 mm / 0.150 inches, wire entry on the rippled side, perpendicular to plug direction, lift system, contact system with integrated wire protection

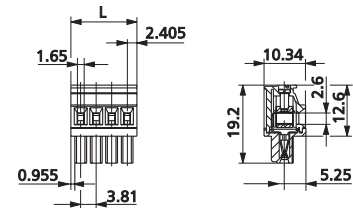
Technical Data Type 114

V / A / AWG 300 / 11 / 28 - 16
Screw torque max. 3 lbs.-in

0.08 - 1.5 mm² 130 V / 2.5 kV / 3 / 9 A
Insulation co-ordination according to IEC 60664-1
Clearance and creepage distance ≥ 2.9 mm
Screw torque max. 0.25 Nm

Wire diameter	single wire 0.3 - 1.4 mm
Wire strip length	7 mm / 0.278 in.
Contact resistance from the termination point via header to the pc board	≤ 5 mΩ per pole
Pole size	2 to 21
Colour	black

Dimensions in mm 1 mm = 0.0394 in.



L = (pole size - 1) x centerline + 4.81 mm / 0.189 in.

Type 113 centerline 3.81 mm / 0.150 in.

P/N 311131 _ 02 03 04 05 06 07
08 09 10 11 12 (pole size)

- complete the part number by adding the pole size to the blank _
- other pole sizes consult factory

Type 114 centerline 3.81 mm / 0.150 in.

P/N 311141 _ 02 03 04 05 06 07
08 09 10 11 12 (pole size)

- complete the part number by adding the pole size to the blank _
- other pole sizes consult factory