



Headers

to Type 79

[Type 18/28 page 125](#)

Accessories

for Type 79

Coding set
716846 [page 157](#)

Mounting flange
750150 right
750151 left [page 154](#)

Coding pin
710121 short
710122 long [page 156](#)

Note for wire range

Additional wire sizes and/or combinations of same size wires as follows:

- Type 79**
- #(1) Wire range extended to No. 30 AWG for factory-wiring.
 - + Two same size wires No. 22 - 16 AWG Cu Sol/Str for field-wiring; No. 30 - 16 AWG Cu Sol/Str factory-wiring.

Description Type 79

Screw type terminal block, pluggable, centerline 5.08 mm / 0.200 inches, wire entry perpendicular to plug direction, wire protector, female contact

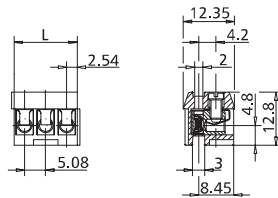
Technical Data Type 79

cULus V / A / AWG 300 / 15 / 22 - 14 #(1), + (see note)
Screw torque max. 7 lbs.-in

Ⓢ 0.08 - 2.5 mm² 125 V / 2.5 kV / 3 / 10 A
Insulation co-ordination according to IEC 60664-1
Clearance and creepage distance ≥ 2.3 mm
Screw torque max. 0.5 Nm

Wire diameter	single wire 0.3 - 1.8 mm
Wire strip length	6 mm / 0.236 in.
Contact resistance from the termination point via header to the pc board	≤ 5 mΩ per pole
Pole size	2, 3
Colour	black

Dimensions in mm 1 mm = 0.0394 in.



L = (pole size - 1) x centerline + 5.08 mm / 0.200 in.

Type 79 centerline 5.08 mm / 0.200 in.

P/N 310791 **02 03** (pole size)

- complete the part number by adding the pole size to the blank
- other pole sizes consult factory