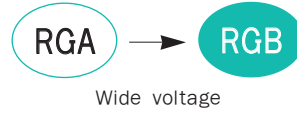


## RGB Series

• 85°C 2,000Hrs assured.

- Non-solvent proof.
- General.
- RoHS compliant.



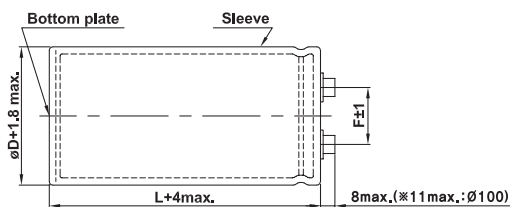
## SPECIFICATIONS

Item	Characteristics	
Rated Voltage Range	16 ~ 100 V <sub>DC</sub>	160 ~ 650 V <sub>DC</sub>
Operating Temperature Range	-40 ~ +85°C	-25 ~ +85°C
Capacitance Tolerance	±20% (M) (at 20°C, 120Hz)	
Leakage Current	I = 0.02CV or 5mA, whichever is smaller. Where, I: Max. Leakage current (μA) C: Nominal capacitance (μF) V: Rated voltage (V <sub>DC</sub> ) (at 20°C, 5 minutes)	
Dissipation Factor(Tanδ)	Tanδ shall not exceed the values shown in the RATINGS. (at 20°C, 120Hz)	
Insulation Withstanding Voltage	When a voltage of 2,000V <sub>AC</sub> is applied for one minute between the terminals shorted each other and the mounting clamp on the insulating sleeve covering the case, there shall not be electrical damage.	
Load Life	The following specifications shall be satisfied when the capacitors are restored to 20°C. after subjected to DC voltage with the rated ripple current is applied (the peak voltage shall not exceed the rated voltage) 2,000 hours at 85°C. Capacitance change ≤ ±20% of the initial value Tanδ ≤ 300% of the initial specified value Leakage current ≤ The initial specified value	
Shelf Life	The following specifications shall be satisfied when the capacitors are restored to 20°C after the exposing them at 85°C for 500 hours without voltage applied. The rated voltage shall be applied to the capacitors for a minimum of 30 minutes, at least 24 hours and not more than 48 hours before the measurements. Capacitance change ≤ ±20% of the initial value Tanδ ≤ 300% of the initial specified value Leakage current ≤ The initial specified value	
Others	Satisfied characteristics KS C IEC 60384-4	

## DIMENSIONS OF RGB Series

Unit(mm)

Marking: BLACK SLEEVE, SILVER INK.



<Screw specifications>

øD = ø35 ~ ø89

- Plus hexagon-headed screw: M5 × 0.8 × 12

- Maximum screw tightening torque: 3.23N · m (33kg · cm)

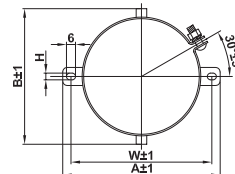
øD = ø100

- Cross-recessed head (Phillips) screw: M8 × 1.25 × 16

Spring washer, Washer

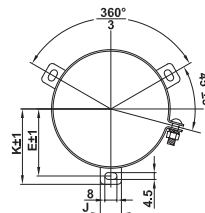
- Maximum screw tightening torque: 6.31N · m (64kg · cm)

### B type mounting clamp



øD	A	B	W	H	F
35	58	44	48	3.5	12.7
50	78	64	68	4.5	22.4
63.5	90	75	80	4.5	28.0
76.5	104.5	90	93.5	4.5	31.5

### C type mounting clamp



øD	E	K	J	F
50	32.5	37.0	14	22.4
63.5	38.1	43.5	14	28.0
76.5	44.5	50.0	14	31.5
89	50.8	56.5	16	31.5
100	56.5	63.4	18	41.5

## RATINGS OF RGB Series

V <sub>DC</sub>	Capacitance (μF)	∅D×L(mm)	Tanδ	Rated Ripple Current (Arms/85°C, 120Hz)	V <sub>DC</sub>	Capacitance (μF)	∅D×L(mm)	Tanδ	Rated Ripple Current (Arms/85°C, 120Hz)
16	47,000	35 × 80	0.70	8.8	80	6,800	35 × 60	0.30	4.9
	68,000	35 × 100	0.70	11.5		10,000	35 × 80	0.30	6.3
	100,000	50 × 80	1.00	12.9		15,000	35 × 120	0.30	8.2
	150,000	50 × 100	1.00	16.2		22,000	50 × 80	0.35	9.3
	220,000	50 × 130	1.00	21.3		33,000	50 × 120	0.35	13.1
	330,000	63.5 × 120	1.30	23.1		47,000	63.5 × 100	0.40	15.5
	470,000	76.5 × 120	2.00	24.7		68,000	63.5 × 140	0.40	17.7
	680,000	76.5 × 160	2.00	33.9		100,000	76.5 × 140	0.45	23.6
25	33,000	35 × 80	0.45	8.2	100	4,700	35 × 60	0.20	4.5
	47,000	35 × 100	0.45	10.8		6,800	35 × 80	0.20	5.9
	68,000	50 × 80	0.60	12.7		10,000	35 × 100	0.20	7.7
	100,000	50 × 100	0.60	14.5		15,000	50 × 80	0.25	8.6
	150,000	50 × 130	0.60	18.8		22,000	50 × 100	0.25	11.3
	220,000	63.5 × 120	0.80	22.0		33,000	50 × 140	0.25	14.7
	330,000	76.5 × 120	1.60	23.7		47,000	63.5 × 140	0.30	17.0
	470,000	76.5 × 160	1.60	29.5		68,000	76.5 × 140	0.40	21.5
35	22,000	35 × 70	0.45	7.0	160	1,500	35 × 60	0.15	3.4
	33,000	35 × 100	0.45	9.3		2,200	35 × 80	0.15	4.6
	47,000	35 × 120	0.45	12.2		3,300	35 × 100	0.15	6.2
	68,000	50 × 100	0.60	14.3		4,700	50 × 80	0.15	7.7
	100,000	50 × 120	0.60	17.1		6,800	50 × 100	0.15	10.0
	150,000	63.5 × 120	0.70	19.6		10,000	50 × 140	0.15	14.1
	220,000	76.5 × 120	0.90	23.3		15,000	63.5 × 140	0.20	16.5
	330,000	76.5 × 160	0.90	27.8		22,000	76.5 × 140	0.25	17.6
50	10,000	35 × 60	0.30	5.2	200	1,000	35 × 60	0.15	2.8
	15,000	35 × 80	0.30	6.6		1,500	35 × 70	0.15	3.6
	22,000	35 × 100	0.30	8.7		2,200	35 × 100	0.15	5.1
	33,000	35 × 120	0.30	11.4		3,300	35 × 120	0.15	6.7
	47,000	50 × 100	0.45	13.2		4,700	50 × 100	0.15	8.3
	68,000	50 × 120	0.45	15.9		6,800	50 × 140	0.15	11.5
	100,000	63.5 × 120	0.50	18.8		10,000	63.5 × 120	0.20	12.1
	150,000	76.5 × 120	0.70	21.5		15,000	76.5 × 120	0.25	13.7
	220,000	76.5 × 160	0.70	26.6		22,000	76.5 × 160	0.25	18.6
63	6,800	35 × 50	0.30	4.5	250	680	35 × 50	0.15	2.1
	10,000	35 × 60	0.30	5.4		1,000	35 × 70	0.15	2.9
	15,000	35 × 80	0.30	6.9		1,500	35 × 80	0.15	3.8
	22,000	35 × 120	0.30	9.8		2,200	35 × 120	0.15	5.5
	33,000	50 × 100	0.45	12.5		3,300	50 × 100	0.15	7.0
	47,000	50 × 120	0.45	14.8		4,700	50 × 140	0.15	9.6
	68,000	63.5 × 100	0.50	16.6		6,800	63.5 × 120	0.20	10.0
	100,000	76.5 × 120	0.70	20.6		10,000	76.5 × 120	0.25	11.2
	150,000	76.5 × 140	0.70	24.0		15,000	76.5 × 160	0.25	15.3

## RATED RIPPLE CURRENT

Frequency Multiplying Factor

V <sub>DC</sub>	∅D(mm)	Frequency(Hz)				
		60	120	300	1k	10k~
16 ~ 50	∅ 35 ~ ∅ 100	0.95	1.00	1.03	1.05	1.09
63 ~ 80	∅ 35	0.90	1.00	1.06	1.10	1.08
	∅ 50 ~ ∅ 100	0.95	1.00	1.03	1.05	1.09
100	∅ 35	0.82	1.00	1.12	1.22	1.30
	∅ 50	0.90	1.00	1.06	1.10	1.18
	∅ 63.5 ~ ∅ 100	0.95	1.00	1.03	1.05	1.09
160 ~ 250	∅ 35	0.80	1.00	1.19	1.34	1.46
	∅ 50 ~ ∅ 63.5	0.81	1.00	1.14	1.26	1.36
	∅ 76.5 ~ ∅ 100	0.82	1.00	1.12	1.22	1.30
350 ~ 650	∅ 35 ~ ∅ 100	0.80	1.00	1.19	1.34	1.46

RATINGS OF RGB Series

V <sub>DC</sub>	Capacitance (μF)	∅D×L(mm)	Tanδ	Rated Ripple Current (Arms/85°C, 120Hz)	V <sub>DC</sub>	Capacitance (μF)	∅D×L(mm)	Tanδ	Rated Ripple Current (Arms/85°C, 120Hz)	
350	390	35×50	0.25	1.9	550	100	35×50	0.25	0.6	
	680	35×80	0.25	2.9		180	35×80	0.25	1.0	
	1,000	35×100	0.25	3.8		270	35×100	0.25	1.3	
	1,200	35×120	0.25	4.2		330	35×120	0.25	1.6	
	1,500	50×75	0.25	4.7		390	50×75	0.25	1.7	
	2,200	50×100	0.25	6.3		560	50×95	0.25	2.1	
	3,300	50×130	0.25	8.8		560	63.5×95	0.25	2.5	
	3,300	63.5×95	0.25	8.8		680	50×115	0.25	2.7	
	3,900	63.5×120	0.25	10.3		680	63.5×120	0.25	3.0	
	4,700	63.5×130	0.25	12.0		820	50×130	0.25	3.1	
	4,700	76.5×100	0.25	11.7		820	63.5×130	0.25	3.5	
	5,600	76.5×115	0.25	12.6		1,200	76.5×95	0.25	4.2	
	6,800	76.5×130	0.25	15.9		1,500	76.5×120	0.25	5.0	
	8,200	76.5×155	0.25	19.0		1,800	76.5×130	0.25	5.8	
	12,000	89×155	0.25	22.5		2,200	76.5×150	0.25	7.0	
22,000	100×220	0.25	38.0	3,300	89×160	0.25	9.3			
27,000	100×250	0.25	44.6	8,200	100×220	0.25	18.0			
400	330	35×50	0.25	1.7	10,000	100×250	0.25	21.2		
	560	35×80	0.25	2.7	600	180	35×100	0.25	1.1	
	820	35×100	0.25	3.4		270	35×120	0.25	1.4	
	1,000	35×120	0.25	3.9		330	50×75	0.25	1.7	
	1,200	50×75	0.25	4.2		390	50×95	0.25	1.8	
	1,800	50×100	0.25	5.7		390	63.5×95	0.25	2.1	
	2,200	50×130	0.25	7.2		560	50×115	0.25	2.2	
	2,700	63.5×95	0.25	7.9		560	63.5×115	0.25	2.6	
	3,300	63.5×120	0.25	9.5		680	50×130	0.25	2.9	
	3,900	63.5×130	0.25	10.9		680	63.5×130	0.25	3.2	
	3,900	76.5×100	0.25	10.6		820	76.5×95	0.25	3.3	
	4,700	76.5×115	0.25	12.6		1,200	76.5×115	0.25	4.4	
	5,600	76.5×130	0.25	14.5		1,500	76.5×130	0.25	5.4	
	6,800	76.5×155	0.25	17.3		1,800	76.5×150	0.25	6.5	
	10,000	89×155	0.25	20.5		2,200	89×130	0.25	7.8	
18,000	100×220	0.25	34.4	2,700		89×155	0.25	8.9		
22,000	100×250	0.25	40.3	4,700	100×220	0.25	14.7			
450	270	35×50	0.25	1.6	5,600	100×250	0.25	17.0		
	470	35×80	0.25	2.4	650	82	35×60	0.25	0.6	
	680	35×100	0.25	3.1		120	35×80	0.25	0.9	
	820	35×120	0.25	3.5		390	50×80	0.25	1.8	
	1,000	50×75	0.25	3.9		470	50×100	0.25	2.5	
	1,200	50×100	0.25	4.7		820	63.5×100	0.25	3.2	
	1,500	50×115	0.25	5.6		1,200	63.5×130	0.25	4.2	
	1,800	50×130	0.25	6.5		1,500	63.5×170	0.25	5.0	
	2,200	63.5×95	0.25	7.2		2,700	76.5×150	0.25	7.2	
	2,700	63.5×120	0.25	8.6		3,300	76.5×190	0.25	8.3	
	3,300	63.5×130	0.25	10.0		3,900	89×170	0.25	10.5	
	3,300	76.5×100	0.25	9.8		4,700	89×190	0.25	12.0	
	3,900	76.5×115	0.25	11.5		500	120	35×50	0.25	0.7
	4,700	76.5×130	0.25	13.3			270	35×80	0.25	1.2
	5,600	76.5×155	0.25	15.7			330	35×100	0.25	1.4
8,200	89×155	0.25	18.6	390			35×120	0.25	1.7	
15,000	100×220	0.25	31.4	470	50×75		0.25	1.8		
18,000	100×250	0.25	36.4	680	50×90		0.25	2.5		
500	120	35×50	0.25	0.7	820		50×120	0.25	2.9	
	270	35×80	0.25	1.2	1,000		50×130	0.25	3.4	
	330	35×100	0.25	1.4	1,000		63.5×95	0.25	3.4	
	390	35×120	0.25	1.7	1,500		63.5×120	0.25	4.5	
	470	50×75	0.25	1.8	1,500		76.5×95	0.25	4.6	
	680	50×90	0.25	2.5	1,800		63.5×130	0.25	5.2	
	820	50×120	0.25	2.9	2,200		76.5×120	0.25	6.1	
	1,000	50×130	0.25	3.4	2,700		76.5×160	0.25	7.7	
	1,000	63.5×95	0.25	3.4	3,900		89×160	0.25	10.1	
	1,500	63.5×120	0.25	4.5	12,000	100×220	0.25	21.7		
	1,500	76.5×95	0.25	4.6	15,000	100×250	0.25	25.7		
	1,800	63.5×130	0.25	5.2						
	2,200	76.5×120	0.25	6.1						
	2,700	76.5×160	0.25	7.7						
	3,900	89×160	0.25	10.1						
12,000	100×220	0.25	21.7							
15,000	100×250	0.25	25.7							

Note : When long life performance is required in actual use, the rms ripple current has to be reduced.