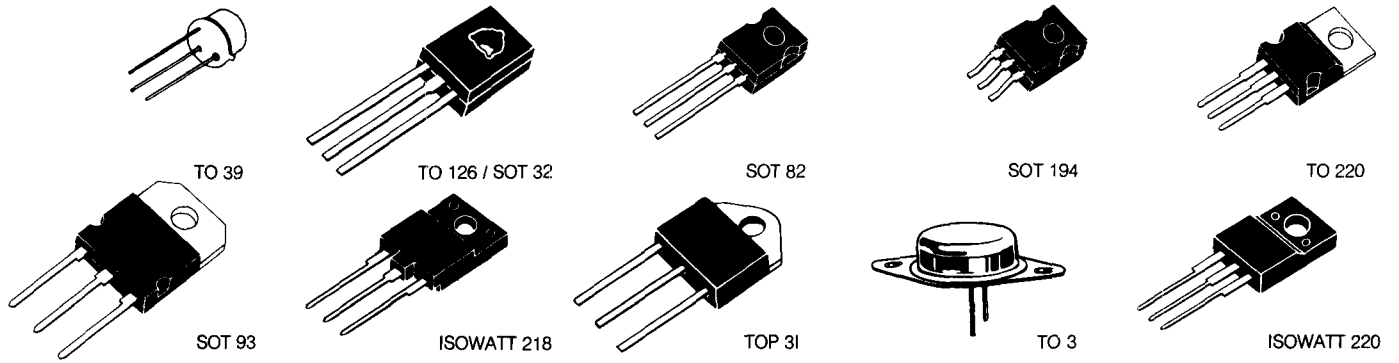


The Data Book Project

DatasheetArchive.com has launched an ambitious effort to digitize thousands of obsolete data books and technical manuals, making them searchable via the DatasheetArchive website.

Scroll down to see the scanned document.

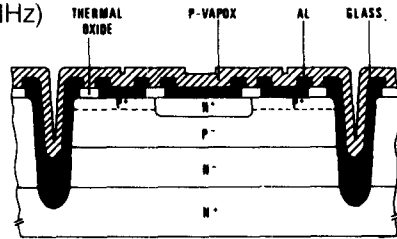
POWER BIPOLAR



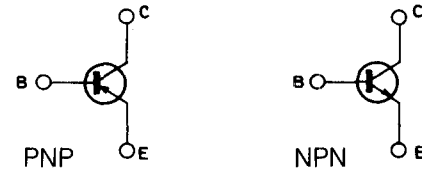
EPITAXIAL BASE TRANSISTORS

Epitaxial base - $I_{CM} : 1 \rightarrow 3 \text{ A}$, $V_{CE0} : 22 \rightarrow 100 \text{ V}$

NPN and PNP types (perfect complementary pairs)
 Medium V_{CE0} range (22 to 100 V)
 Medium switching speed
 Medium f_T (2 to 20 MHz)
 High ruggedness



Internal schematic diagrams



I_C (A)	V_{CBO} (V)	V_{CE0} (V)	P_{tot} (W)	Package	Type		$h_{FE} @ I_C / V_{CE}$			$V_{CEsat} @ I_C / I_B$		
					NPN	PNP	min	(A)	(V)	(V)	(A)	(mA)
1	40	40	30	TO 126	2N 4921	2N 4918	30	0.5	1	0.6	1	100
1	40	40	30	TO 220	TIP 29	TIP 30	15	1	4	0.7	1	125
1	60	60	30	TO 126	2N 4922	2N 4919	30	0.5	1	0.6	1	100
1	60	60	30	TO 220	TIP 29 A	TIP 30 A	15	1	4	0.7	1	125
1	80	80	30	TO 126	2N 4923	2N 4920	30	0.5	1	0.6	1	100
1	80	80	30	TO 220	TIP 29 B	TIP 30 B	15	1	4	0.7	1	125
1	100	100	30	TO 220	TIP 29 C	TIP 30 C	15	1	4	0.7	1	125
2	45	45	25	TO 126	BD 233	BD 234	25	1	2	0.6	1	100
2	55	45	30	TO 220	BD 239	BD 240	15	1	4	0.7	1	200
2	60	60	25	TO 126	BD 235	BD 236	25	1	2	0.6	1	100
2	70	60	30	TO 220	BD 239 A	BD 240 A	15	1	4	0.7	1	200
2	90	80	30	TO 220	BD 239 B	BD 240 B	15	1	4	0.7	1	200
2	100	80	25	TO 126	BD 237	BD 238	25	1	2	0.6	1	100
2	115	100	30	TO 220	BD 239 C	BD 240 C	15	1	4	0.7	1	200
3	30	30	25	TO 126	MJE 520	MJE 370	25	1	1	—	—	—
3	40	40	40	TO 220	TIP 31	TIP 32	25	1	4	1.2	3	375
3	45	45	30	TO 126	BD 175	BD 176	40	0.15	2	0.8	1	100
3	45	45	30	TO 126	BD 175-10	BD 176-10	63	0.15	2	0.8	1	100
3	45	45	30	TO 126	BD 175-16	BD 176-16	100	0.15	2	0.8	1	100
3	45	45	30	TO 126	BD 175-6	BD 176-6	40	0.15	2	0.8	1	100
3	55	45	40	TO 220	BD 241	BD 242	25	1	4	1.2	3	600
3	60	60	30	TO 126	BD 177	BD 178	40	0.15	2	0.8	1	100
3	60	60	30	TO 126	BD 177-10	BD 178-10	63	0.15	2	0.8	1	100
3	60	60	30	TO 126	BD 177-6	BD 178-6	40	0.15	2	0.8	1	100
3	60	60	40	TO 220	TIP 31 A	TIP 32 A	25	1	4	1.2	3	375
3	70	60	40	TO 220	BD 241 A	BD 242 A	25	1	4	1.2	3	600
3	80	80	30	TO 126	BD 179	BD 180	40	0.15	2	0.8	1	100
3	80	80	30	TO 126	BD 179-10	BD 180-10	63	0.15	2	0.8	1	100