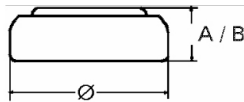


Data Sheet

Primary Silver

V 8 GS



Type Number..... 4173
Designation IEC..... SR 55
System..... Silver oxide/ Zinc /
 KOH - Electrolyte

Nominal Voltage..... 1,55 V
Typical Capacity C..... 40 mAh
 Load 13 kOhm, at 20°C down to 1.3 V

Weight (approx.)..... 0,9 g
Volume..... 0,18 ccm
Coding..... Manufacturing Month/Year
 by Letter Code

Temperature Ranges min max.
 Storage..... -10°C 65°C
 Discharge..... -10°C 65°C

Dimensions min max.
 Diameter..... 11,25 11,60
 Height (A/B)..... 1,85 2,10

Segment..... Watch/High Drain

Main Applications..... Watch
 Photo
 Electronic

Typical Capacities (at 20°C)

| Discharge Type | Load | End Voltage: 1.3V |
|---|---------------------------|---|
| Continuous 24h/d, 7d/w Current [μ A] | 13000 Ω 120 | Time: 335 h Capacity [mAh]: 40 Energy [MWh]: 62 |

All Data contained herein is for single cells
 For battery applications, performance data may vary from single cell data, depending on specific battery configuration