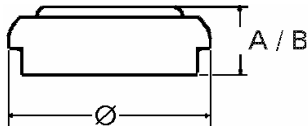


**Data Sheet**

**Type Number** ..... 4626  
**Designation IEC** ..... LR 9  
**System** ..... Manganese Dioxide /  
 Zinc / KOH - Electrolyte



**Nominal Voltage** ..... 1,5 V  
**Typical Capacity C** ..... 200 mAh  
 Load 300 Ohm, at 20°C down to 0.9 V

**Weight (approx.)** ..... 3,3 g  
**Volume** ..... 1,01 ccm  
**Coding**..... Manufacturing Month/Year by  
 Letter Code

**Temperature Ranges** min max.  
 Storage ..... -10°C 65 °C  
 Discharge ..... -10°C 65°C

**Dimensions** min max.  
 Diameter ... 15 15,5  
 Height (A/B) ..... 5,6 6,1

**Segment** ..... Photo

**Main Applications** ..... Photo  
 Electronic  
 Car Alarm

**Typical Capacities (at 20°C)**

Discharge Type	Load	End Voltage:	0.9 V
Continuous	300 Ω	Time:	48 h
24h/d,7d/w		Capacity [mAh]:	200
Current [μA]:	5000	Energy [MWh]:	250

All Data contained herein is for single cells

For battery applications, performance data may vary from single cell data, depending on specific battery configuration

VARTA Microbattery GmbH, Daimlerstr. 1, D-73479 Ellwangen/Jagst  
 Tel.: (+49) 7961/921-0, Telefax: (+49) 7961/921-553

Subject to change without prior notice!  
 Date of issue: 16.09.2003