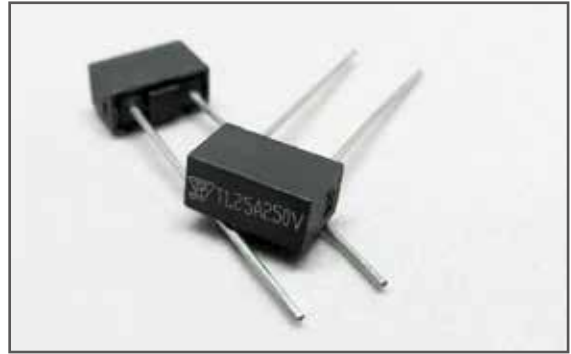


I-T Characteristics / 時間-電流特性

Ampere Rating 額定電流	% of Ampere Rating 額定電流%	Opening Time 熔斷時間
100mA~6.3A	150%	1 Hr Min. / 最短1小時
	210%	2 Min Max. / 最長2分鐘
	275%	400ms Min. 10s Max. / 最短400毫秒, 最長10秒
	400%	150ms Min. 3s Max. / 最短150毫秒, 最長3秒
	1000%	20ms Min. 150s Max. / 最短20毫秒, 最長150毫秒

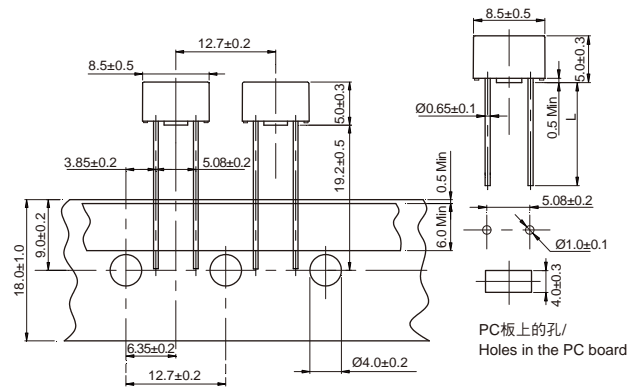
In accordance with IEC60127-3 standard, sheet4 / 遵循 IEC60127-3, 規格單4



Product Features / 產品特性

Materials 材質	Body / 本體: Thermoplastic / 耐熱性塑料 UL94 V-0 Lead / 引線: Tinned copper wire / 鍍錫銅線
Operating Temperature 操作溫度	-55°C to +125°C (Consider de-rating / 需考慮溫度折減)
Solderability 可焊性	260°C, ≤ 3s. (Wave / 波峰焊) 350±10°C, ≤ 1s. (Soldering iron / 烙鐵焊)
Resistance to Soldering Heat 耐焊接熱	260°C, 10s. (Wave / 波峰焊) 350°C, 3s. (Soldering iron / 烙鐵焊)
Recommended Soldering Parameters 建議焊錫參數	Wave soldering parameter / 波峰焊 Soldering pot temperature / 錫爐溫度: 260°C Max Solder dwell time / 焊接時間: 2~5s
	Hand welding parameter / 手工焊 Soldering iron temperature / 烙鐵溫度: 350±5°C Solder dwell time / 焊接時間: 1~2s Max.
Storage Conditions 儲存條件	Can be stored for 3 years under tight seal condition at temperature of +10°C~60°C, relative humidity ≤ 75%. 在溫度+10°C~60°C, 相對濕度 ≤ 75% 的密閉條件下可存放 3 年。 At most can be kept 30 days at temperature +10°C~60°C, relative humidity ≤ 95% under covered conditions. 在溫度+10°C~60°C, 相對濕度為 95% 的非露天下最多可存放 30 天。

Dimensions / 尺寸圖 (Unit / 單位:mm)



Long Leads / 長引線: L = 19.2±0.5mm
Short Leads / 短引線: L = 4.5±0.5mm

Electrical Characteristics / 電氣特性

Rated Current 額定電流	Rated Voltage 額定電壓	Breaking Capacity 分斷能力	Safety Approvals 安全認證					
			CULUS	DVE	TUV	K	CCC	PSJET
100mA	250V/300V/400V	160A@250V AC 130A@300V AC 50A@400V AC	●	●	●	●	●	●
125mA	250V/300V/400V		●	●	●	●	●	●
160mA	250V/300V/400V		●	●	●	●	●	●
200mA	250V/300V/400V		●	●	●	●	●	●
250mA	250V/300V/400V		●	●	●	●	●	●
315mA	250V/300V/400V		●	●	●	●	●	●
400mA	250V/300V/400V		●	●	●	●	●	●
500mA	250V/300V/400V		●	●	●	●	●	●
630mA	250V/300V/400V		●	●	●	●	●	●
800mA	250V/300V/400V		●	●	●	●	●	●
1.00A	250V/300V/400V		●	●	●	●	●	●
1.25A	250V/300V/400V		●	●	●	●	●	●
1.60A	250V/300V/400V		●	●	●	●	●	●
2.00A	250V/300V/400V		●	●	●	●	●	●
2.50A	250V/300V/400V		●	●	●	●	●	●
3.15A	250V/300V/400V		●	●	●	●	●	●
4.00A	250V/300V/400V		●	●	●	●	●	●
5.00A	250V/300V/400V		●	●	●	●	●	●
6.30A	250V/300V	●	●	●	●	●	●	
6.30A	400V	●	●	◎	●	●	●	

Remark: For CULUS 160A at 250V AC

For DVE K CCC PSJET 100A at 250V AC

For CULUS 130A at 300V AC

For DVE PSJET 100A at 300V AC and 50A at 300V AC

For CULUS DVE 50A at 400V AC

◎ Pending / 認證中